

SPORT PARTICIPATION RESEARCH PROJECT

SPORT PARTICIPATION RATES - AGGREGATION OF 10 SPORTS, VICTORIA 2015-2022



PROF ROCHELLE EIME, MELANIE CHARITY,
DR AURELIE PANKOWIAK, PROF HANS WESTERBEEK

February, 2024





TABLE OF CONTENTS

<i>LIST OF FIGURES</i>	p 03
<hr/>	
<i>LIST OF TABLES, LIST OF MAPS</i>	p 04
<hr/>	
<i>INTRODUCTION</i>	p 05
<hr/>	
<i>RESULTS</i>	p 06
<hr/>	



LIST OF FIGURES

Figure 1. Overall participation rates: 2015 – 2022, Victoria: by age.....	12
Figure 2. Age-specific participation rates: 2020 – 2022, Victoria	14
Figure 3. Age-specific participation rates: 2020 – 2022, Males, Victoria	14
Figure 4. Age-specific participation rates: 2020 – 2022, Females, Victoria	15
Figure 5. Participation rates, 2021, 2022, Victoria: by age.....	21
Figure 6. Participation rates, 2022, Victoria: by sex and age.....	22
Figure 7. Participation rates, 2021, Victoria: by sex and age	22
Figure 8. Participation rates, 2022, Victoria: by region and age	23
Figure 9. Participation rates, 2021, Victoria: by region and age	23
Figure 10. Participation rates, 2022, Metropolitan – Growth: by sex and age.....	24
Figure 11. Participation rates, 2021, Metropolitan – Growth: by sex and age	24
Figure 12. Participation rates, 2022, Metropolitan – Other: by sex and age.....	25
Figure 13. Participation rates, 2021, Metropolitan – Other: by sex and age.....	25
Figure 14. Participation rates, 2022, Regional – Growth: by sex and age	26
Figure 15. Participation rates, 2021, Regional – Growth: by sex and age.....	26
Figure 16. Participation rates, 2022, Regional – Other: by sex and age	27
Figure 17. Participation rates, 2021, Regional – Other: by sex and age	27
Figure 18. Participation rates, 2022, males: by region and age	28
Figure 19. Participation rates, 2021, males: by region and age	28
Figure 20. Participation rates, 2022, females: by region and age	29
Figure 21. Participation rates, 2021, females: by region and age	29
Figure 22. Participation rates, 2022: LGA by region.....	31
Figure 23. Participation rates, 2022, Victoria: by sport and age	33
Figure 24. Sport-specific program profiles of registered participants, 2022, Victoria.....	36
Figure 25. Sport-specific disability status profiles of registered participants, 2022, Victoria.....	37
Figure 26. Sport-specific ATSI status profiles of registered participants, 2022, Victoria.....	37
Figure 27. Age-specific participation rates: 2022, Victoria ¹	38
Figure 28. Age-specific participation rates: 2022, Victoria by sex ¹	38



LIST OF TABLES

Table 1. Summary of participation rate changes 2020-2022: by sport.....	11
Table 2. Age-specific participation numbers: 2015 - 2022, Victoria	12
Table 3. Participation counts and rates ^{1,2} , 2020 - 2022, Victoria: by sex and age	13
Table 4. Participation counts and rates ^{1,2} , 2021 & 2022, Victoria: by region, sex and age	16
Table 5. Participation counts and rates ^{1,2} , 2022, Victoria: by region, sex and age	19
Table 6. Participation rates, 2021, 2022, Victoria: by Local Government Area	30
Table 9. Participation rates and SEIFA rank, 2022, Victoria: by Local Government Area	34
Table 10. Participation counts and rates ^{1,2} , 2022, Victoria: by sex and age	39

LIST OF MAPS

Map 1. Participation rate, 2022: Victoria, by LGA.....	32
Map 2. Participation rate, 2022: Metropolitan regions, by LGA	32



INTRODUCTION

Participation rates in club-based sport

This report provides the results of an analysis of participation in Victorian club-based sport during the 2015 – 2022 period. It combines data from Victorian State Sporting Associations (SSAs) for ten major sports: Australian rules football, Basketball, Cricket, Football (Soccer), Gymnastics, Hockey, Netball, Sailing, Swimming, and Tennis. Two of the participating sports (Bowls and Golf) were unable to provide 2019 data, while Rowing data was only included from 2021. Therefore, these three sports data are not incorporated into this report.

A participant, or player, is defined as a registered player of a Victorian sporting club or program that was affiliated with one of the 10 SSAs, in the 2022 registration year designated by each sport, who was aged between 4 and 100 years and resided in Victoria. These SSAs recorded a total of 1,014,909 player registrations in 2022. In order to provide consistency across all breakdowns by region, sex and age, those for whom residential postcode, sex or birthdate was missing or invalid (8.7% of registrations; see Table 1 for more detail) were excluded from the analysis, and adjustments to counts were made in postcodes that were partly allocated to a Local Government Authority (LGA) outside Victoria (see the note on data accuracy on page 41 of this report).

This report provides a summary of the 924,235 player registrations for which complete and valid data were recorded. Registration data were provided by each SSA in anonymized form. Consequently, it should be noted that, because a person could be a registered player of more than one sport, and an individual player's data could not be linked across sports, when data for multiple sports are combined the total number of registrations is greater than the number of individual players.

The variable tabulated and graphed, for Victoria as a whole and for each sex and/or geographical region, is the age-specific participation rate, defined as the number of player registrations in each age range, expressed as a percentage of the estimated resident population (ERP) in that age range.



RESULTS

1 Sport participation in 2022

Overall age-group participation in 2022

- When combining the ten sports, in 2022 overall participation was highest in children aged 5–14 years, with participation rates highest for those aged 10–14 years (57.4%), followed by those aged 5–9 years (56.2%) (Table 5, Figure 5).
- After participation rates peaked in children aged 10–14 years (57.4%), rates decreased considerably (by approximately 26% points) in adolescents (15–19 years) (to 31.6%). This was followed by another large decline in young adults (20–24 years) (to 17.4%).
- Participation rates continued to decline progressively across the lifespan. Between 5–9% of Victorian adults aged 30–54 years participated in the 10 sports, and fewer than 5% of Victorians aged 55 years and older participated in one of the ten sports (Table 5, Figure 5).

Sex differences

- In 2022, The overall male participation rate (18.6%) was almost twice that of females (9.7%). Participation rates were higher for males than females in all age groups (Table 5, Figure 6).
- Participation rates for males were highest in children aged 10–14 years (68.2%) while female participation rates peaked in those aged 5–9 (46.3%) (Table 5, Figure 6).
- The largest absolute difference (based on % points) in participation rates between males and females occurred in children aged 10–14 years (difference of 22% points: males 68.2%; females 46.1%). The difference between males' and females' participation rates was also very high in young children (5–9 years) and in adolescents (15–19 years): difference of approximately 20% points for both groups (Table 5).
- In some older age groups, the proportional difference between male and female participation rates were greater. Male participation rates were three or more times higher than that of female for those aged 20–39 and 80 and older (Table 5).

Region differences

- Metropolitan areas had larger participation numbers (651,340) than regional areas (272,896). However, overall participation rates were higher in regional areas (Regional 17.0%, Metropolitan 13.2%) (Table 5).



- The age group breakdown shows that regional areas also had higher participation rates than metropolitan areas across the lifespan (Table 5, Figure 8).
- In metropolitan regions, the highest participation rates were for children aged 10–14 years (Metropolitan – Growth 35.6%, Metropolitan – Other 63.6%). In regional areas, the highest participation rates were for children aged 5–9 years (Regional – Growth 71.3%, Regional – Other 70.8%) (Table 5, Figure 8).

Sex differences per region

- Male and female participation patterns across the lifespan were similar across regions, with participation generally peaking for children aged 5–14 years and decreasing consistently with increasing age (Table 5, Figures 18 and 20).
- Participation rates were higher for males than females in all four regions and across all age groups. The biggest differences in % points were found in children and youth (5–19 years).

LGA differences

- There was considerable variation in participation rates across Victorian LGAs, and between LGAs within the four designated regions (Table 9, Figure 22).
- In 2022, the lowest participation rate was 5.9% in Greater Dandenong, in Metropolitan – Other. The lowest participation rates in the other regions were as follows: Metropolitan – Growth: Melton, 8.7%; Regional – Growth: Moorabool, 14.7%; and Regional – Other: Hepburn, 11.4% (Table 9).
- The highest participation rate was 30.5% in Southern Grampians, in Regional – Other. The highest participation rates of the other regions were as follows: Regional – Growth: Surf Coast, 25.2%; Metropolitan – Growth: Cardinia, 13.9%; and Metropolitan – Other: Bayside, 25.4% (Table 9).
- The graphic representation of LGAs participation ranking within each of the four regions (Figure 22) shows a relatively linear progression between the LGAs with the lowest participation rates and those with the highest rates. However, for most regions, the LGAs with most participants had participation rates that were considerably higher than the rest of the LGAs within that region (Figure 22).
- Within the regional LGAs, there was generally higher participation in the western parts of the State. South-eastern LGAs also had higher participation rates (Map 1).
- Within the metropolitan LGAs, there was generally higher participation in the central and southern areas (Map 2).



Sport-specific differences

- Eight sports provided participant data for their competition and specific sports programs (Figure 24).

Sport-specific demographic variables

- Eight sports provided data on the number of participants self-reporting a disability (Figure 25).
- Seven sports provided data on the number of participants indicating they identified as an Aboriginal or Torres Strait Islander (Figure 26).

2. Changes to participation 2021-2022

Overall changes 2021 to 2022

- Between 2021 and 2022, overall participation rates (for the 10 sports combined) increased more than 1% for those aged 4–9 and 40–44 years. Those aged 15–19 decreased participation more than 1% (Table 4).
- Participation rates for all other age groups remained similar over the timeframe.
- The largest proportional increase was amongst children aged 5–9 years (increase of 6.5% compared to 2021 participation rate, equivalent to 26,648 additional players). The next largest increase was in young children aged 4 (4.3%, 3,434 players) (Table 3, Figure 5).

Changes in overall male and female participation

- Between 2021 and 2022, overall participation rates increased for both males and females, but the increase in male participation (1.0%; 33,128 players) was greater than that of females (0.7% 24,442 players) (Table 3).
- Male participation rates increased for all age groups except for those aged 15–19 years. Highest increases were seen in those aged 4 (4.8%) 5–9 (5.7%) and 40–44 years (1.6%) (Table 3, Figures 6 & 7).
- Female participation rates increased in almost all age groups, also with higher increases in those aged 4 (3.7%) and 5–9 years (7.4%). Increases (below 1%) were shown for all other age groups other than those aged 15–19 where a decrease of approximately 1% was seen (Table 4, Figures 6 & 7).



Regional changes

- Overall participation rates increased in all regions between 2021 and 2022. The greatest increase was seen in Regional – Growth regions (1.2%), followed by Metropolitan – Growth (0.9%), Metropolitan – Other (0.9%) and Regional – Other (0.7%) (Table 4).
- Participation rates increased for all age groups in Regional – Growth areas between 2021 and 2022, while in Regional – Other areas, those aged between 15 and 29 showed a decrease. (Table 4, Figures 10-17).
- Participation rates increased between 2021 and 2022 for all age groups in Metropolitan – Growth areas except those aged 15-19. Those aged 10-19 in Metropolitan – Other areas decreased participation in this timeframe (Table 4, Figures 10-17).
- The largest increase in participation rate was in children 5-9 years, in all regions (Metropolitan – Growth 5.6%, Metropolitan – Other 6.5%, Regional – Growth 7.5% and Regional – Other 7.9%). The next highest increase was shown in those aged 4 across all regions (Table 4).

Changes in male and female participation within regions

- Overall participation rates increased for both females and males in all four regions between 2021 and 2022 (Table 4), with increases higher for males than for females in these areas. For females, the largest increase was shown in Regional – Other for those aged 5-9 (9.2%). For males, those aged 5-9 in Regional – Growth areas showed the greatest increase (7.0%) (Table 4, Figures 18-21).
- Increases were generally higher for males than females across the four regions and in most age groups. The notable exceptions, where females showed +2% point increases 2021 to 2022 when compared to males, were those aged 5-9 in Metropolitan – Other (2.0% difference) and Regional – Other (2.3% difference), and those aged 10-14 in Metropolitan – Other (2.1% difference) (Table 4).
- The highest increase in participation for both males and females, and in all four regions was in young children (5-9 age years). The exception was males in Metropolitan – Other where it was those aged 4 with the highest increase (Table 4).

Changes within LGAs

- Most LGAs increased participation rates between 2021 and 2022. The largest increase in participation rate occurred in Queenscliffe, in Regional – Other, with a change of 4.2%. The largest decrease was 1.7% in Buloke (Regional – Other) (Table 6).
- By region:
 - Metropolitan-Growth: The LGA with the largest increase in participation rate was Mitchell (1.2%). Whittlesea had the lowest rate rise (0.0%).
 - Metropolitan-Other: The LGA with the largest increase in participation rate was



Hobsons Bay (1.7%). Port Phillip had the lowest rate rise (0.3%).

- Regional-Growth: The LGA with the largest increase in participation rate was Surf Coast (4.0%). Moorabool had the lowest rate rise (0.3%).
- Regional-Other: The LGA with the largest increase in participation rate was Queenscliffe (4.2%). Buloke had the largest decrease in participation rate (-1.7%).

3. Overall participation in 2022 for all 13 sports

- When combining the 13 sports, total participation is 1,048,093 participants representing a participation rate of 16%.
- In 2022 overall participation was highest in children aged 5-14 years, with participation rates highest for those aged 10-14 years (58.6%), followed by those aged 5-9 years (56.3%) (Table 10, Figure 27).
- In 2022, The overall male participation rate (21.5%) was almost twice that of females (10.7%). Participation rates were higher for males than females in all age groups (Table 10, Figure 28).
- Participation rates for both males and females were highest in children aged 10-14 years (male: 69.5%, females 47.1%) (Table 10, Figure 28).



Table 1. Summary of participation rate changes 2020–2022: by sport

Sport	Participation rate (%)			Change 2020-2021		Change 2021-2022	
	2020	2021	2022	% points	% change ¹	% points	% change ²
A	2.0	3.3	3.1	1.3	66.2	-0.2	-4.8
B	2.3	2.9	3.3	0.6	25.1	0.4	14.5
C	1.4	2.0	2.0	0.6	42.3	0.1	3.8
D	0.6	0.8	1.0	0.2	39.6	0.2	20.7
E	0.1	0.2	0.2	0.1	82.1	0.0	5.2
F	1.0	1.5	1.5	0.5	51.9	0.0	-0.9
G	0.5	0.6	0.5	0.1	17.9	-0.1	-12.4
H	0.6	1.0	1.0	0.4	66.3	0.0	-1.8
I	0.1	0.1	0.1	0.0	8.5	0.0	-0.2
J	1.2	1.1	1.6	-0.1	-10.3	0.5	45.8

¹ Change in % points as a percentage of 2020 participation rate. Discrepancies are due to rounding of rates to one decimal place

² Change in % points as a percentage of 2021 participation rate. Discrepancies are due to rounding of rates to one decimal place

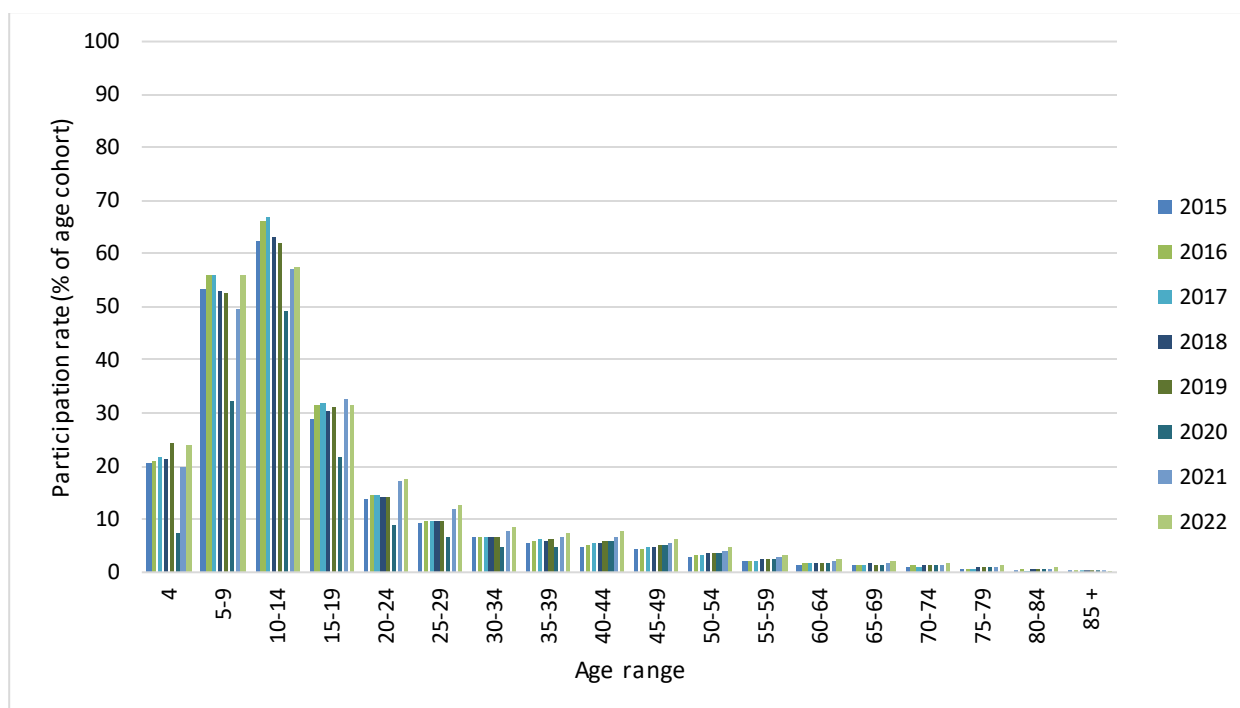


Figure 1. Overall participation rates: 2015 – 2022, Victoria: by age

Table 2. Age-specific participation numbers: 2015 – 2022, Victoria

Year	Age range																	
	4	5-9	10-14	15-19	20-24	25-29	30-34	35-39	40-44	45-49	50-54	55-59	60-64	65-69	70-74	75-79	80-84	85+
2022	19,220	229,113	228,929	115,949	73,374	61,019	44,084	36,065	33,552	25,871	19,573	12,429	9,135	6,631	4,689	2,845	1,215	542
2021	15,786	202,465	227,042	120,405	72,783	57,557	39,910	32,637	28,562	22,624	16,537	10,397	7,470	5,243	3,904	2,065	860	420
2020	6,129	135,216	195,846	82,382	42,359	36,034	26,336	24,400	24,398	22,464	14,769	9,303	6,649	4,747	3,451	1,777	696	308
2019	19,772	217,045	239,485	119,107	69,333	52,303	34,507	30,349	24,632	21,811	14,430	9,266	6,174	4,435	3,181	1,692	642	298
2018	17,429	214,408	237,115	115,204	67,548	50,571	32,913	27,732	22,476	20,075	13,452	9,201	6,300	4,772	3,363	1,597	680	300
2017	18,015	221,933	243,385	119,268	67,965	48,570	32,596	27,098	22,981	19,750	12,970	8,132	5,597	4,440	2,704	1,285	522	191
2016	16,872	217,003	232,989	116,746	65,214	46,101	31,369	25,163	22,051	18,788	12,627	8,179	5,527	4,442	2,738	1,339	550	278
2015	15,669	195,497	212,744	104,081	59,380	41,624	29,674	21,749	20,396	16,619	11,534	7,215	4,872	3,807	2,287	1,097	421	371



Table 3. Participation counts and rates^{1,2}, 2020 – 2022, Victoria: by sex and age

Region	Sex		Age range																	Total	
			4	5-9	10-14	15-19	20-24	25-29	30-34	35-39	40-44	45-49	50-54	55-59	60-64	65-69	70-74	75-79	80-84		85+
Victoria	Persons	n 2022	19,220	229,113	228,929	115,949	73,374	61,019	44,084	36,065	33,552	25,871	19,573	12,429	9,135	6,631	4,689	2,845	1,215	542	924,235
		n 2021	15,786	202,465	227,042	120,405	72,783	57,557	39,910	32,637	28,562	22,624	16,537	10,397	7,470	5,243	3,904	2,065	860	420	866,665
		n 2020	6,129	135,216	195,846	82,382	42,359	36,034	26,336	24,400	24,398	22,464	14,769	9,303	6,649	4,747	3,451	1,777	696	308	637,263
		Rate 2022 (%)	24.0	56.2	57.4	31.6	17.4	12.5	8.6	7.3	7.8	6.2	4.8	3.2	2.5	2.1	1.7	1.4	0.9	0.4	14.1
		Rate 2021 (%)	19.7	49.6	57.0	32.8	17.3	11.8	7.8	6.6	6.7	5.4	4.0	2.7	2.1	1.7	1.4	1.0	0.6	0.3	13.2
		Rate 2020 (%)	7.6	32.5	49.3	21.8	9.0	6.7	4.9	4.9	5.7	5.2	3.7	2.4	1.8	1.5	1.3	0.9	0.5	0.2	9.5
	Males	n 2022	11,458	137,334	139,649	78,552	53,648	45,207	32,798	25,717	22,435	16,916	13,138	8,413	6,036	4,269	3,053	1,895	871	390	601,779
		n 2021	9,475	125,292	138,970	80,329	52,852	42,654	29,955	23,308	19,020	14,918	11,200	7,122	5,045	3,500	2,606	1,481	618	306	568,650
		n 2020	2,912	82,480	119,360	54,060	31,001	26,705	19,598	17,022	16,007	14,828	10,019	6,312	4,466	3,086	2,323	1,254	488	223	412,143
		Rate 2022 (%)	27.9	65.5	68.2	41.6	24.7	18.3	13.0	10.5	10.6	8.2	6.6	4.5	3.5	2.8	2.3	2.0	1.4	0.7	18.6
		Rate 2021 (%)	23.1	59.7	67.9	42.5	24.3	17.3	11.9	9.5	9.0	7.3	5.6	3.8	2.9	2.3	2.0	1.6	1.0	0.6	17.6
		Rate 2020 (%)	7.0	38.5	58.5	27.9	12.7	9.8	7.5	6.9	7.5	7.0	5.1	3.3	2.6	2.0	1.8	1.4	0.8	0.4	12.4
	Females	n 2022	7,762	91,779	89,281	37,397	19,725	15,812	11,286	10,348	11,118	8,954	6,434	4,016	3,099	2,363	1,636	951	344	152	322,456
		n 2021	6,311	77,173	88,073	40,076	19,932	14,903	9,954	9,329	9,542	7,706	5,337	3,275	2,426	1,743	1,298	584	242	114	298,015
		n 2020	3,217	52,735	76,486	28,322	11,358	9,329	6,738	7,378	8,391	7,636	4,750	2,991	2,184	1,661	1,128	523	208	85	225,120
		Rate 2022 (%)	19.9	46.3	46.1	20.9	9.7	6.6	4.4	4.1	5.1	4.2	3.1	2.0	1.7	1.4	1.1	0.9	0.5	0.2	9.7
		Rate 2021 (%)	16.2	38.9	45.4	22.4	9.8	6.2	3.8	3.7	4.4	3.6	2.6	1.7	1.3	1.1	0.9	0.6	0.3	0.1	9.0
		Rate 2020 (%)	8.2	26.0	39.6	15.4	5.0	3.5	2.5	3.0	3.9	3.5	2.3	1.5	1.2	1.0	0.8	0.5	0.3	0.1	6.7

¹ Number of player registrations per 100 residents

² Rate percentages are displayed to 1 decimal place accuracy, with values greater than zero but less than 0.05 being displayed as <0.05. As requested, changes in rates are displayed to 2 decimal place accuracy, but non-zero positive and negative differences less than 0.05 in magnitude are shown as +<0.05 and -<0.05 respectively.

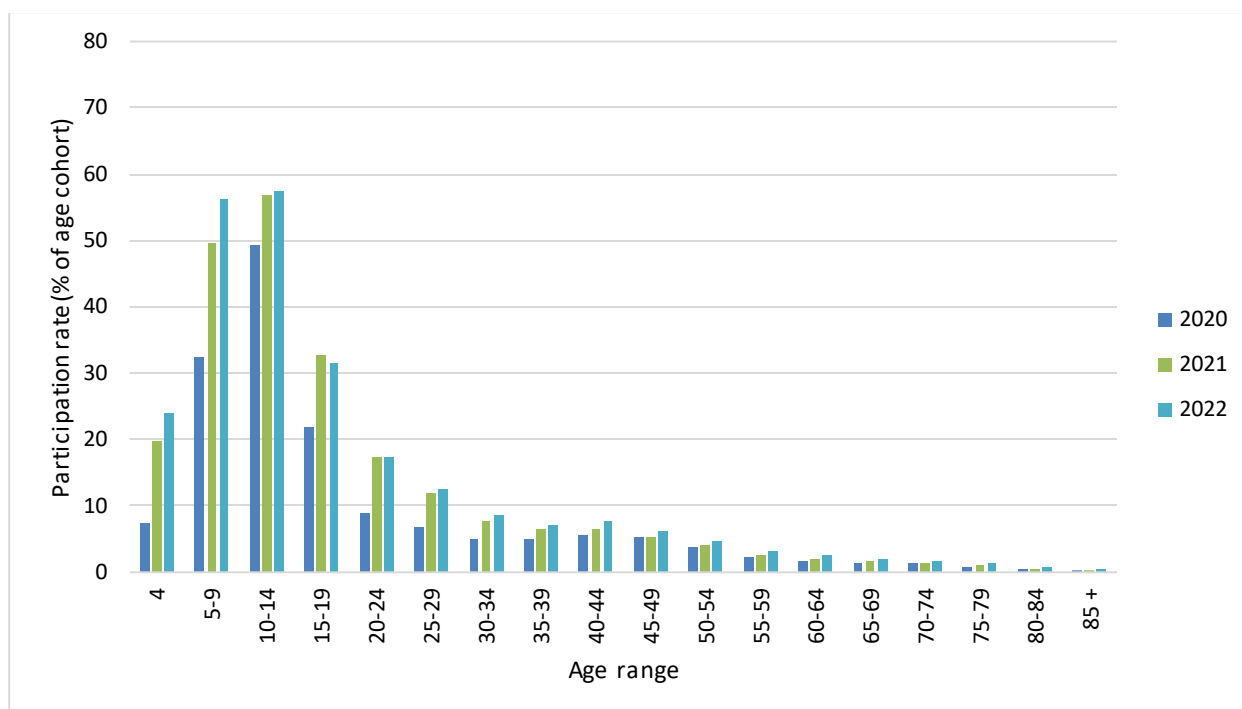


Figure 2. Age-specific participation rates: 2020 - 2022, Victoria

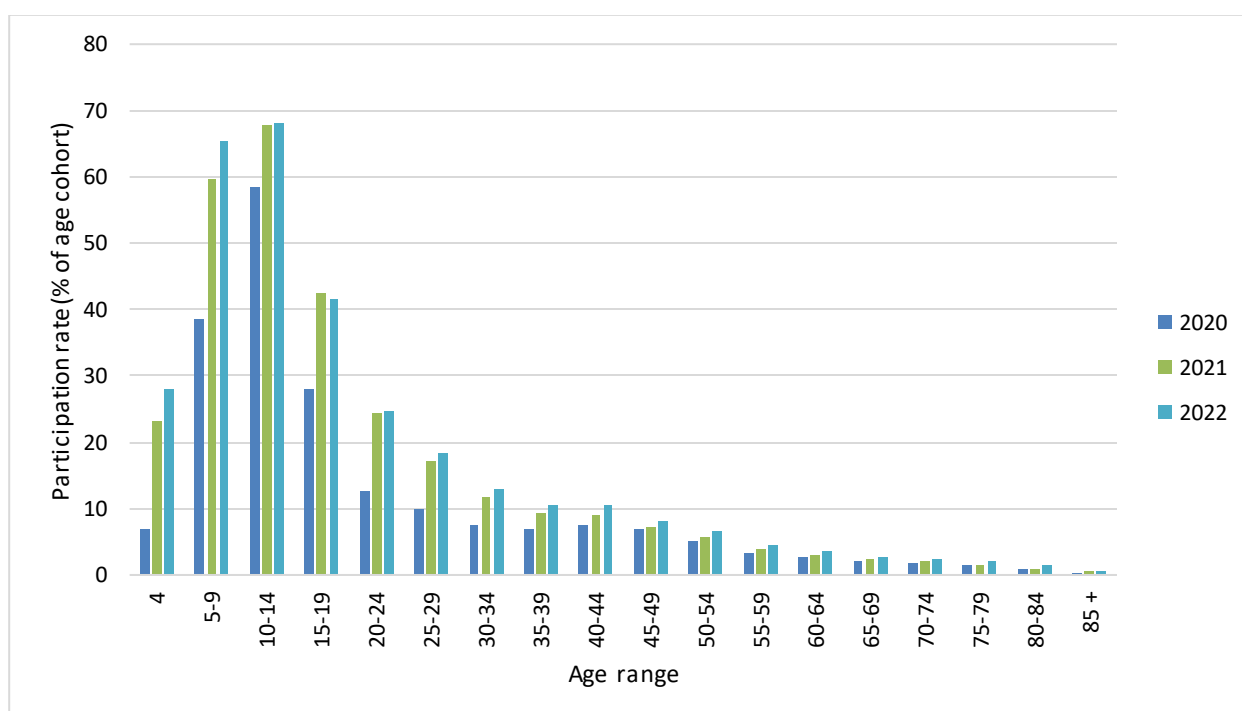


Figure 3. Age-specific participation rates: 2020 - 2022, Males, Victoria

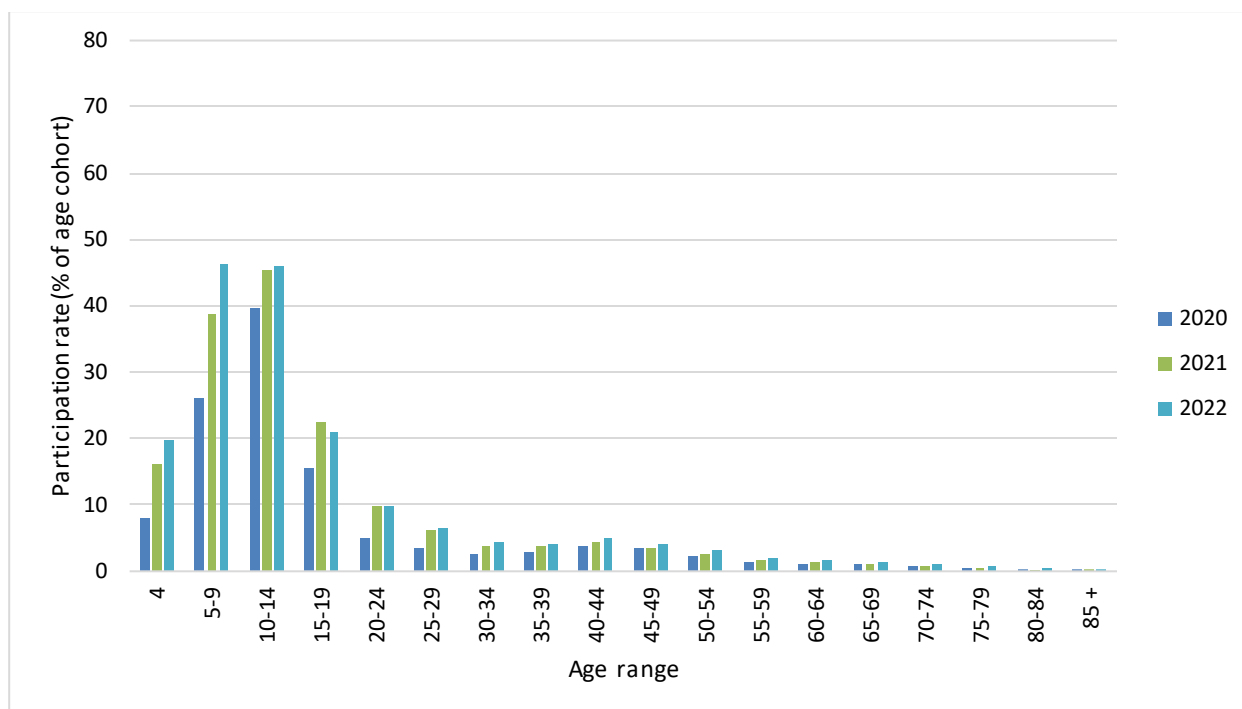


Figure 4. Age-specific participation rates: 2020 - 2022, Females, Victoria



Table 4. Participation counts and rates^{1,2}, 2021 & 2022, Victoria: by region, sex and age

Region	Sex		Age range																	Total	
			4	5-9	10-14	15-19	20-24	25-29	30-34	35-39	40-44	45-49	50-54	55-59	60-64	65-69	70-74	75-79	80-84		85+
Victoria	Persons	n 2022	19,220	229,113	228,929	115,949	73,374	61,019	44,084	36,065	33,552	25,871	19,573	12,429	9,135	6,631	4,689	2,845	1,215	542	924,235
		n 2021	15,786	202,465	227,042	120,405	72,783	57,557	39,910	32,637	28,562	22,624	16,537	10,397	7,470	5,243	3,904	2,065	860	420	866,665
		Rate 2022 (%)	24.0	56.2	57.4	31.6	17.4	12.5	8.6	7.3	7.8	6.2	4.8	3.2	2.5	2.1	1.7	1.4	0.9	0.4	14.1
		Rate 2021 (%)	19.7	49.6	57.0	32.8	17.3	11.8	7.8	6.6	6.7	5.4	4.0	2.7	2.1	1.7	1.4	1.0	0.6	0.3	13.2
		Change 2021-2022	4.30	6.53	0.47	-1.21	0.14	0.71	0.82	0.69	1.17	0.78	0.74	0.53	0.46	0.44	0.28	0.39	0.26	0.09	0.88
	Males	n 2022	11,458	137,334	139,649	78,552	53,648	45,207	32,798	25,717	22,435	16,916	13,138	8,413	6,036	4,269	3,053	1,895	871	390	601,779
		n 2021	9,475	125,292	138,970	80,329	52,852	42,654	29,955	23,308	19,020	14,918	11,200	7,122	5,045	3,500	2,606	1,481	618	306	568,650
		Rate 2022 (%)	27.9	65.5	68.2	41.6	24.7	18.3	13.0	10.5	10.6	8.2	6.6	4.5	3.5	2.8	2.3	2.0	1.4	0.7	18.6
		Rate 2021 (%)	23.1	59.7	67.9	42.5	24.3	17.3	11.9	9.5	9.0	7.3	5.6	3.8	2.9	2.3	2.0	1.6	1.0	0.6	17.6
		Change 2021-2022	4.84	5.74	0.33	-0.94	0.37	1.04	1.13	0.98	1.61	0.97	0.97	0.69	0.57	0.51	0.34	0.44	0.40	0.15	1.02
	Females	n 2022	7,762	91,779	89,281	37,397	19,725	15,812	11,286	10,348	11,118	8,954	6,434	4,016	3,099	2,363	1,636	951	344	152	322,456
		n 2021	6,311	77,173	88,073	40,076	19,932	14,903	9,954	9,329	9,542	7,706	5,337	3,275	2,426	1,743	1,298	584	242	114	298,015
		Rate 2022 (%)	19.9	46.3	46.1	20.9	9.7	6.6	4.4	4.1	5.1	4.2	3.1	2.0	1.7	1.4	1.1	0.9	0.5	0.2	9.7
		Rate 2021 (%)	16.2	38.9	45.4	22.4	9.8	6.2	3.8	3.7	4.4	3.6	2.6	1.7	1.3	1.1	0.9	0.6	0.3	0.1	9.0
		Change 2021-2022	3.72	7.37	0.62	-1.50	-0.10	0.38	0.51	0.41	0.73	0.59	0.53	0.38	0.36	0.38	0.23	0.35	0.13	+ <0.05	0.74
Metropolitan Growth	Persons	n 2022	3,531	40,487	38,046	18,385	12,272	9,797	7,416	7,247	5,800	3,305	1,944	978	577	329	267	106	48	15	150,548
		n 2021	2,765	33,601	36,134	19,309	12,139	9,171	6,832	6,343	4,633	2,781	1,615	867	455	294	204	78	25	20	137,263
		Rate 2022 (%)	14.1	33.2	35.6	20.3	12.6	8.8	5.6	5.3	5.3	3.5	2.3	1.3	0.9	0.6	0.6	0.4	0.3	0.1	10.1
		Rate 2021 (%)	11.1	27.5	33.8	21.3	12.5	8.2	5.2	4.6	4.3	3.0	1.9	1.2	0.7	0.6	0.5	0.3	0.1	0.1	9.2
		Change 2021-2022	3.06	5.64	1.79	-1.02	0.14	0.56	0.44	0.66	1.07	0.56	0.39	0.15	0.19	0.07	0.15	0.10	0.13	- <0.05	0.89
	Males	n 2022	2,004	24,721	25,212	13,169	9,297	7,637	5,790	5,670	4,373	2,401	1,443	713	390	209	186	66	38	11	103,329
		n 2021	1,567	21,446	23,833	13,690	9,212	7,124	5,406	4,920	3,425	2,022	1,194	628	312	198	143	57	21	15	95,212
		Rate 2022 (%)	15.6	39.6	45.9	28.2	18.1	13.6	9.1	8.2	7.9	5.1	3.5	1.9	1.3	0.8	0.9	0.5	0.5	0.2	13.8
		Rate 2021 (%)	12.2	34.3	43.4	29.3	17.9	12.7	8.5	7.1	6.2	4.3	2.9	1.7	1.0	0.8	0.7	0.4	0.3	0.3	12.7
		Change 2021-2022	3.40	5.24	2.51	-1.11	0.16	0.91	0.60	1.08	1.70	0.81	0.60	0.23	0.25	+ <0.05	0.21	0.07	0.21	-0.07	1.08
	Females	n 2022	1,527	15,765	12,834	5,216	2,975	2,159	1,626	1,577	1,427	903	501	266	187	120	81	40	10	3	47,219
		n 2021	1,198	12,155	12,301	5,619	2,927	2,047	1,425	1,423	1,209	758	421	239	143	96	61	21	4	4	42,051
		Rate 2022 (%)	12.6	26.5	24.7	11.9	6.5	3.9	2.4	2.3	2.7	2.0	1.2	0.7	0.6	0.4	0.4	0.3	0.1	<0.1	6.3
		Rate 2021 (%)	9.9	20.4	23.6	12.8	6.4	3.7	2.1	2.1	2.3	1.6	1.0	0.6	0.4	0.4	0.3	0.1	<0.1	<0.1	5.6
		Change 2021-2022	2.71	6.07	1.02	-0.92	0.11	0.20	0.29	0.23	0.41	0.31	0.19	0.07	0.13	0.09	0.09	0.13	0.06	- <0.05	0.69



Region	Sex		Age range																	Total	
			4	5-9	10-14	15-19	20-24	25-29	30-34	35-39	40-44	45-49	50-54	55-59	60-64	65-69	70-74	75-79	80-84		85+
Metropolitan Other	Persons	n 2022	10,222	119,060	120,789	60,104	39,435	33,957	24,146	18,679	19,189	16,136	13,100	8,652	6,238	4,467	3,245	2,039	933	401	500,792
		n 2021	8,334	106,897	122,289	63,241	38,448	31,114	21,302	16,821	16,148	14,057	10,971	7,205	5,155	3,557	2,780	1,508	665	310	470,800
		Rate 2022 (%)	28.0	63.3	63.6	32.2	16.4	12.1	8.6	7.1	8.4	7.1	5.9	4.3	3.4	2.8	2.3	1.9	1.2	0.5	14.5
		Rate 2021 (%)	22.8	56.9	64.4	33.9	16.0	11.1	7.5	6.4	7.1	6.2	4.9	3.6	2.8	2.2	1.9	1.4	0.8	0.4	13.7
		Change 2021-2022	5.17	6.47	-0.79	-1.68	0.41	1.01	1.01	0.71	1.33	0.92	0.96	0.71	0.58	0.57	0.32	0.50	0.34	0.11	0.87
	Males	n 2022	5,950	70,451	72,008	40,514	28,981	25,340	18,125	13,672	12,897	10,610	8,785	5,904	4,198	2,916	2,131	1,350	684	284	324,799
		n 2021	4,851	65,160	73,796	41,530	28,030	23,097	16,101	12,302	10,900	9,323	7,411	4,983	3,515	2,395	1,848	1,083	479	222	307,025
		Rate 2022 (%)	31.6	72.9	74.1	42.5	23.6	17.7	12.9	10.5	11.5	9.6	8.1	6.0	4.7	3.9	3.2	2.7	2.0	0.9	19.2
		Rate 2021 (%)	25.8	67.4	75.9	43.5	22.8	16.2	11.5	9.5	9.7	8.4	6.9	5.0	3.9	3.2	2.8	2.2	1.4	0.7	18.1
		Change 2021-2022	5.84	5.48	-1.84	-1.06	0.77	1.57	1.44	1.06	1.78	1.16	1.27	0.93	0.77	0.70	0.43	0.54	0.59	0.19	1.05
	Females	n 2022	4,272	48,609	48,780	19,590	10,455	8,617	6,021	5,007	6,293	5,527	4,315	2,749	2,041	1,550	1,114	688	249	118	175,992
		n 2021	3,483	41,737	48,493	21,711	10,418	8,017	5,202	4,519	5,248	4,733	3,560	2,221	1,639	1,162	932	425	186	89	163,775
		Rate 2022 (%)	24.1	53.2	52.7	21.5	8.9	6.2	4.3	3.8	5.4	4.8	3.8	2.6	2.1	1.8	1.4	1.2	0.6	0.2	10.0
		Rate 2021 (%)	19.7	45.7	52.4	23.8	8.9	5.8	3.7	3.4	4.5	4.1	3.1	2.1	1.7	1.4	1.2	0.7	0.4	0.2	9.3
		Change 2021-2022	4.46	7.52	0.31	-2.33	+ <0.05	0.43	0.58	0.37	0.89	0.68	0.66	0.51	0.42	0.46	0.24	0.46	0.14	0.06	0.70
Regional Growth	Persons	n 2022	2,542	30,505	28,739	14,388	8,973	7,257	4,785	3,996	3,428	2,704	1,902	1,253	1,171	909	585	361	126	72	113,695
		n 2021	2,146	27,290	27,390	14,294	8,939	6,913	4,459	3,627	3,019	2,295	1,597	1,060	901	677	458	258	104	51	105,477
		Rate 2022 (%)	30.9	71.3	67.0	37.3	22.4	16.1	10.6	9.1	8.5	6.5	4.6	3.0	2.8	2.3	1.6	1.5	0.8	0.4	16.7
		Rate 2021 (%)	26.1	63.8	63.8	37.1	22.3	15.4	9.9	8.2	7.5	5.5	3.9	2.5	2.1	1.7	1.3	1.0	0.6	0.3	15.5
		Change 2021-2022	4.81	7.52	3.14	0.24	0.08	0.76	0.72	0.83	1.02	0.98	0.74	0.46	0.64	0.59	0.35	0.42	0.13	0.13	1.21
	Males	n 2022	1,642	18,986	17,622	9,658	6,307	5,101	3,396	2,564	2,111	1,625	1,200	799	720	561	357	251	93	60	73,052
		n 2021	1,380	17,450	16,803	9,626	6,226	4,944	3,177	2,368	1,855	1,427	1,046	703	595	436	302	189	76	44	68,647
		Rate 2022 (%)	39.3	85.9	79.4	49.3	30.9	22.6	15.4	11.9	11.0	8.0	6.0	4.0	3.6	3.0	2.1	2.1	1.2	1.0	22.0
		Rate 2021 (%)	33.0	79.0	75.7	49.2	30.5	21.9	14.4	11.0	9.6	7.0	5.2	3.5	3.0	2.3	1.7	1.6	1.0	0.7	20.7
		Change 2021-2022	6.26	6.95	3.69	0.17	0.40	0.69	0.99	0.91	1.33	0.97	0.77	0.48	0.63	0.66	0.32	0.52	0.22	0.26	1.33
	Females	n 2022	900	11,519	11,117	4,730	2,666	2,156	1,389	1,432	1,318	1,079	701	454	451	348	229	110	33	12	40,643
		n 2021	766	9,840	10,587	4,669	2,714	1,969	1,282	1,259	1,164	868	551	357	306	241	156	69	27	7	36,830
		Rate 2022 (%)	22.2	55.7	53.7	24.9	13.5	9.6	6.1	6.3	6.3	5.0	3.3	2.1	2.0	1.7	1.2	0.8	0.4	0.1	11.7
		Rate 2021 (%)	18.9	47.6	51.1	24.6	13.8	8.8	5.6	5.6	5.5	4.0	2.6	1.6	1.4	1.2	0.8	0.5	0.3	0.1	10.6
		Change 2021-2022	3.30	8.12	2.56	0.32	-0.24	0.83	0.47	0.76	0.73	0.98	0.71	0.45	0.65	0.51	0.39	0.32	0.06	+ <0.05	1.10



Region	Sex		Age range																	Total	
			4	5-9	10-14	15-19	20-24	25-29	30-34	35-39	40-44	45-49	50-54	55-59	60-64	65-69	70-74	75-79	80-84		85+
Regional	Persons	n 2022	2,926	39,061	41,356	23,072	12,693	10,010	7,737	6,143	5,134	3,725	2,628	1,545	1,149	927	592	340	109	54	159,201
		n 2021	2,541	34,677	41,229	23,560	13,258	10,359	7,317	5,846	4,761	3,492	2,354	1,266	960	716	463	221	66	39	153,124
Other	Persons	Rate 2022 (%)	28.7	70.8	70.3	44.5	29.2	20.2	14.9	11.8	10.2	6.6	4.3	2.4	1.7	1.4	1.0	0.9	0.4	0.2	17.2
		Rate 2021 (%)	24.9	62.8	70.1	45.5	30.5	20.9	14.1	11.2	9.4	6.2	3.8	1.9	1.4	1.1	0.8	0.6	0.2	0.2	16.5
		Change 2021-2022	3.77	7.94	0.22	-0.94	-1.30	-0.71	0.81	0.57	0.74	0.42	0.45	0.43	0.28	0.33	0.22	0.30	0.16	0.06	0.66
	Males	n 2022	1,862	23,176	24,806	15,212	9,063	7,130	5,487	3,811	3,055	2,281	1,710	998	728	583	380	228	56	35	100,598
		n 2021	1,677	21,236	24,537	15,484	9,384	7,490	5,271	3,719	2,841	2,146	1,550	807	622	471	314	153	42	25	97,767
		Rate 2022 (%)	36.3	81.4	81.7	56.2	39.6	28.5	21.3	15.0	12.5	8.3	5.7	3.1	2.2	1.8	1.3	1.1	0.4	0.4	21.8
		Rate 2021 (%)	32.7	74.6	80.8	57.2	41.0	29.9	20.5	14.6	11.6	7.8	5.2	2.5	1.8	1.5	1.1	0.8	0.3	0.3	21.2
		Change 2021-2022	3.62	6.81	0.89	-1.01	-1.40	-1.44	0.84	0.36	0.87	0.49	0.54	0.60	0.31	0.35	0.23	0.38	0.12	0.10	0.61
	Females	n 2022	1,064	15,885	16,549	7,861	3,629	2,879	2,250	2,332	2,080	1,445	917	547	421	345	212	112	53	20	58,603
		n 2021	865	13,441	16,692	8,077	3,873	2,869	2,046	2,128	1,921	1,347	804	459	338	244	150	69	24	14	55,357
		Rate 2022 (%)	21.0	59.5	58.1	31.8	17.6	11.7	8.6	8.7	8.0	5.1	2.9	1.6	1.2	1.1	0.7	0.6	0.4	0.1	12.6
		Rate 2021 (%)	17.1	50.3	58.6	32.7	18.8	11.7	7.9	8.0	7.4	4.7	2.6	1.4	1.0	0.8	0.5	0.3	0.2	0.1	11.9
		Change 2021-2022	3.91	9.15	-0.50	-0.87	-1.18	+<0.05	0.79	0.77	0.61	0.35	0.36	0.27	0.24	0.31	0.22	0.22	0.20	+<0.05	0.70

¹ Aggregated over 10 sports.

² Number of player registrations per 100 residents, expressed as a percentage & displayed to 1 decimal place accuracy. Values greater than zero but less than 0.05 being displayed as <.05. As requested, changes in rates are displayed to 2 decimal place accuracy, but non-zero positive and negative differences less than 0.05 in magnitude are shown as +<0.05 and -<0.05 respectively.



Table 5. Participation counts and rates^{1,2}, 2022, Victoria: by region, sex and age

Region	Sex		Age range																	Total	
			4	5-9	10-14	15-19	20-24	25-29	30-34	35-39	40-44	45-49	50-54	55-59	60-64	65-69	70-74	75-79	80-84		85+
Victoria	Persons	n	19,220	229,113	228,929	115,949	73,374	61,019	44,084	36,065	33,552	25,871	19,573	12,429	9,135	6,631	4,689	2,845	1,215	542	924,235
		ERP ³	79,955	407,971	398,485	367,429	420,581	487,341	510,833	495,472	428,344	418,273	408,628	384,180	360,435	314,620	280,438	198,818	138,770	139,822	6,547,094
		Rate (%)	24.0	56.2	57.4	31.6	17.4	12.5	8.6	7.3	7.8	6.2	4.8	3.2	2.5	2.1	1.7	1.4	0.9	0.4	14.1
	Males	n	11,458	137,334	139,649	78,552	53,648	45,207	32,798	25,717	22,435	16,916	13,138	8,413	6,036	4,269	3,053	1,895	871	390	601,779
		ERP ³	41,003	209,717	204,699	188,819	217,572	246,629	251,975	245,928	211,509	205,720	199,571	187,450	173,633	150,392	133,315	94,240	63,032	54,315	3,236,448
		Rate (%)	27.9	65.5	68.2	41.6	24.7	18.3	13.0	10.5	10.6	8.2	6.6	4.5	3.5	2.8	2.3	2.0	1.4	0.7	18.6
	Females	n	7,762	91,779	89,281	37,397	19,725	15,812	11,286	10,348	11,118	8,954	6,434	4,016	3,099	2,363	1,636	951	344	152	322,456
		ERP ³	38,987	198,254	193,786	178,610	203,009	240,712	258,858	249,544	216,835	212,553	209,057	196,730	186,802	164,228	147,123	104,578	75,738	85,507	3,310,646
		Rate (%)	19.9	46.3	46.1	20.9	9.7	6.6	4.4	4.1	5.1	4.2	3.1	2.0	1.7	1.4	1.1	0.9	0.5	0.2	9.7
Metropolitan Growth	Persons	n	3,531	40,487	38,046	18,385	12,272	9,797	7,416	7,247	5,800	3,305	1,944	978	577	329	267	106	48	15	150,548
		ERP ³	25,006	122,002	106,930	90,498	97,111	111,599	131,910	137,233	108,790	93,276	83,825	74,348	63,842	51,536	42,278	27,606	17,309	14,694	1,494,723
		Rate (%)	14.1	33.2	35.6	20.3	12.6	8.8	5.6	5.3	5.3	3.5	2.3	1.3	0.9	0.6	0.6	0.4	0.3	0.1	10.1
	Males	N	2,004	24,721	25,212	13,169	9,297	7,637	5,790	5,670	4,373	2,401	1,443	713	390	209	186	66	38	11	103,329
		ERP ³	12,859	62,502	54,909	46,764	51,402	56,158	63,541	69,200	55,686	47,003	41,577	36,759	30,796	24,738	19,976	13,328	7,981	5,618	749,625
		Rate (%)	15.6	39.6	45.9	28.2	18.1	13.6	9.1	8.2	7.9	5.1	3.5	1.9	1.3	0.8	0.9	0.5	0.5	0.2	13.8
	Females	N	1,527	15,765	12,834	5,216	2,975	2,159	1,626	1,577	1,427	903	501	266	187	120	81	40	10	3	47,219
		ERP ³	12,147	59,500	52,021	43,734	45,709	55,441	68,369	68,033	53,104	46,273	42,248	37,589	33,046	26,798	22,302	14,278	9,328	9,076	745,098
		Rate (%)	12.6	26.5	24.7	11.9	6.5	3.9	2.4	2.3	2.7	2.0	1.2	0.7	0.6	0.4	0.4	0.3	0.1	<0.1	6.3
Metropolitan Other	Persons	n	10,222	119,060	120,789	60,104	39,435	33,957	24,146	18,679	19,189	16,136	13,100	8,652	6,238	4,467	3,245	2,039	933	401	500,792
		ERP ³	36,530	187,991	189,825	186,587	239,884	281,164	282,157	261,972	228,795	227,137	222,476	202,834	185,800	159,184	143,907	106,634	78,339	83,678	3,445,947
		Rate (%)	28.0	63.3	63.6	32.2	16.4	12.1	8.6	7.1	8.4	7.1	5.9	4.3	3.4	2.8	2.3	1.9	1.2	0.5	14.5
	Males	N	5,950	70,451	72,008	40,514	28,981	25,340	18,125	13,672	12,897	10,610	8,785	5,904	4,198	2,916	2,131	1,350	684	284	324,799
		ERP ³	18,827	96,633	97,235	95,402	122,885	142,842	140,613	129,813	112,057	110,835	108,128	98,903	89,145	74,775	66,681	49,299	34,818	32,546	1,693,561
		Rate (%)	31.6	72.9	74.1	42.5	23.6	17.7	12.9	10.5	11.5	9.6	8.1	6.0	4.7	3.9	3.2	2.7	2.0	0.9	19.2
	Females	N	4,272	48,609	48,780	19,590	10,455	8,617	6,021	5,007	6,293	5,527	4,315	2,749	2,041	1,550	1,114	688	249	118	175,992
		ERP ³	17,708	91,358	92,590	91,185	116,999	138,322	141,544	132,159	116,738	116,302	114,348	103,931	96,655	84,409	77,226	57,335	43,521	51,132	1,752,386
		Rate (%)	24.1	53.2	52.7	21.5	8.9	6.2	4.3	3.8	5.4	4.8	3.8	2.6	2.1	1.8	1.4	1.2	0.6	0.2	10.0



Region	Sex		Age range																	Total	
			4	5-9	10-14	15-19	20-24	25-29	30-34	35-39	40-44	45-49	50-54	55-59	60-64	65-69	70-74	75-79	80-84		85+
Regional Growth	Persons	n	2,542	30,505	28,739	14,388	8,973	7,257	4,785	3,996	3,428	2,704	1,902	1,253	1,171	909	585	361	126	72	113,695
		ERP ³	8,226	42,777	42,914	38,534	40,073	45,006	45,001	44,149	40,227	41,817	41,181	41,700	42,210	39,738	36,296	24,717	16,501	16,342	679,218
		Rate (%)	30.9	71.3	67.0	37.3	22.4	16.1	10.6	9.1	8.5	6.5	4.6	3.0	2.8	2.3	1.6	1.5	0.8	0.4	16.7
	Males	N	1,642	18,986	17,622	9,658	6,307	5,101	3,396	2,564	2,111	1,625	1,200	799	720	561	357	251	93	60	73,052
		ERP ³	4,181	22,098	22,199	19,574	20,380	22,618	22,096	21,499	19,250	20,339	19,954	19,874	19,832	18,871	17,367	11,727	7,618	6,254	331,900
		Rate (%)	39.3	85.9	79.4	49.3	30.9	22.6	15.4	11.9	11.0	8.0	6.0	4.0	3.6	3.0	2.1	2.1	1.2	1.0	22.0
	Females	N	900	11,519	11,117	4,730	2,666	2,156	1,389	1,432	1,318	1,079	701	454	451	348	229	110	33	12	40,643
		ERP ³	4,059	20,679	20,715	18,960	19,693	22,388	22,905	22,650	20,977	21,478	21,227	21,826	22,378	20,867	18,929	12,990	8,883	10,088	347,318
		Rate (%)	22.2	55.7	53.7	24.9	13.5	9.6	6.1	6.3	6.3	5.0	3.3	2.1	2.0	1.7	1.2	0.8	0.4	0.1	11.7
Regional Other	Persons	n	2,926	39,061	41,356	23,072	12,693	10,010	7,737	6,143	5,134	3,725	2,628	1,545	1,149	927	592	340	109	54	159,201
		ERP ³	10,193	55,201	58,816	51,810	43,513	49,572	51,765	52,118	50,532	56,043	61,146	65,298	68,583	64,162	57,957	39,861	26,621	25,108	927,206
		Rate (%)	28.7	70.8	70.3	44.5	29.2	20.2	14.9	11.8	10.2	6.6	4.3	2.4	1.7	1.4	1.0	0.9	0.4	0.2	17.2
	Males	N	1,862	23,176	24,806	15,212	9,063	7,130	5,487	3,811	3,055	2,281	1,710	998	728	583	380	228	56	35	100,598
		ERP ³	5,135	28,484	30,356	27,079	22,905	25,011	25,725	25,416	24,516	27,543	29,912	31,914	33,860	32,008	29,291	19,886	12,615	9,897	461,362
		Rate (%)	36.3	81.4	81.7	56.2	39.6	28.5	21.3	15.0	12.5	8.3	5.7	3.1	2.2	1.8	1.3	1.1	0.4	0.4	21.8
	Females	N	1,064	15,885	16,549	7,861	3,629	2,879	2,250	2,332	2,080	1,445	917	547	421	345	212	112	53	20	58,603
		ERP ³	5,073	26,717	28,460	24,731	20,608	24,561	26,040	26,702	26,016	28,500	31,234	33,384	34,723	32,154	28,666	19,975	14,006	15,211	465,844
		Rate (%)	21.0	59.5	58.1	31.8	17.6	11.7	8.6	8.7	8.0	5.1	2.9	1.6	1.2	1.1	0.7	0.6	0.4	0.1	12.6

¹ Aggregated over 10 sports.

² Number of player registrations per 100 residents, expressed as a percentage.

³ ERP = Estimated resident population

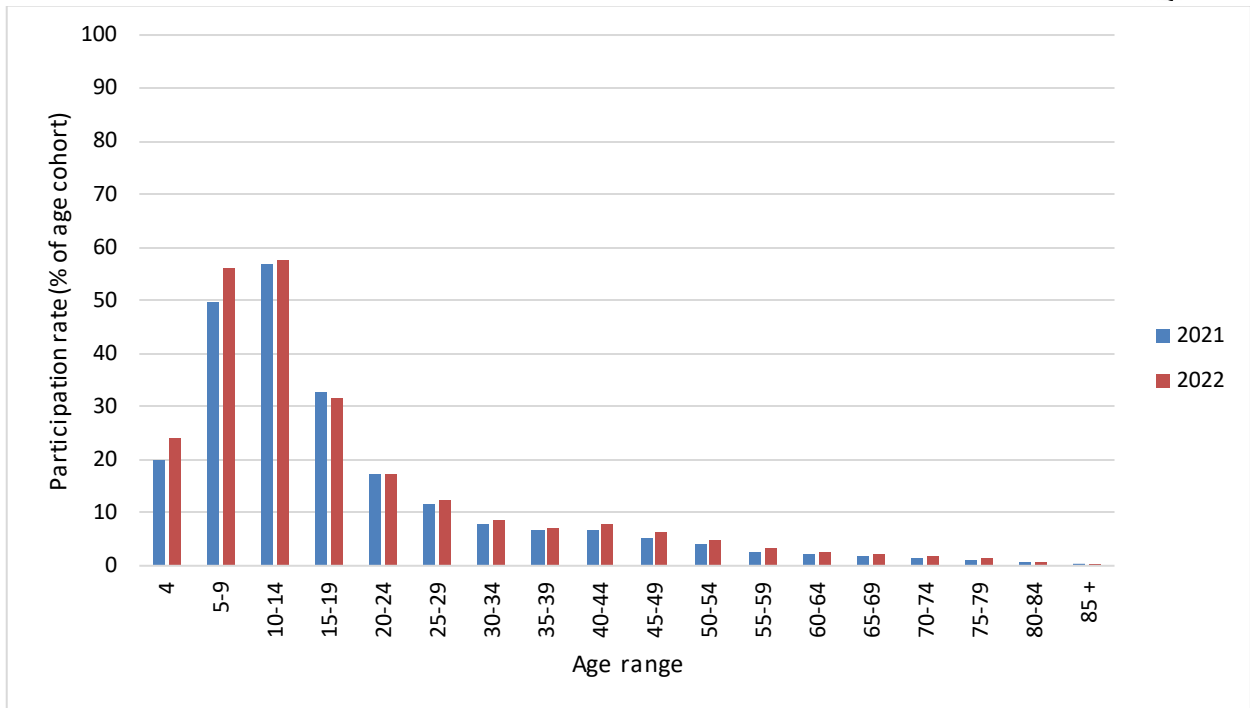


Figure 5. Participation rates, 2021, 2022, Victoria: by age

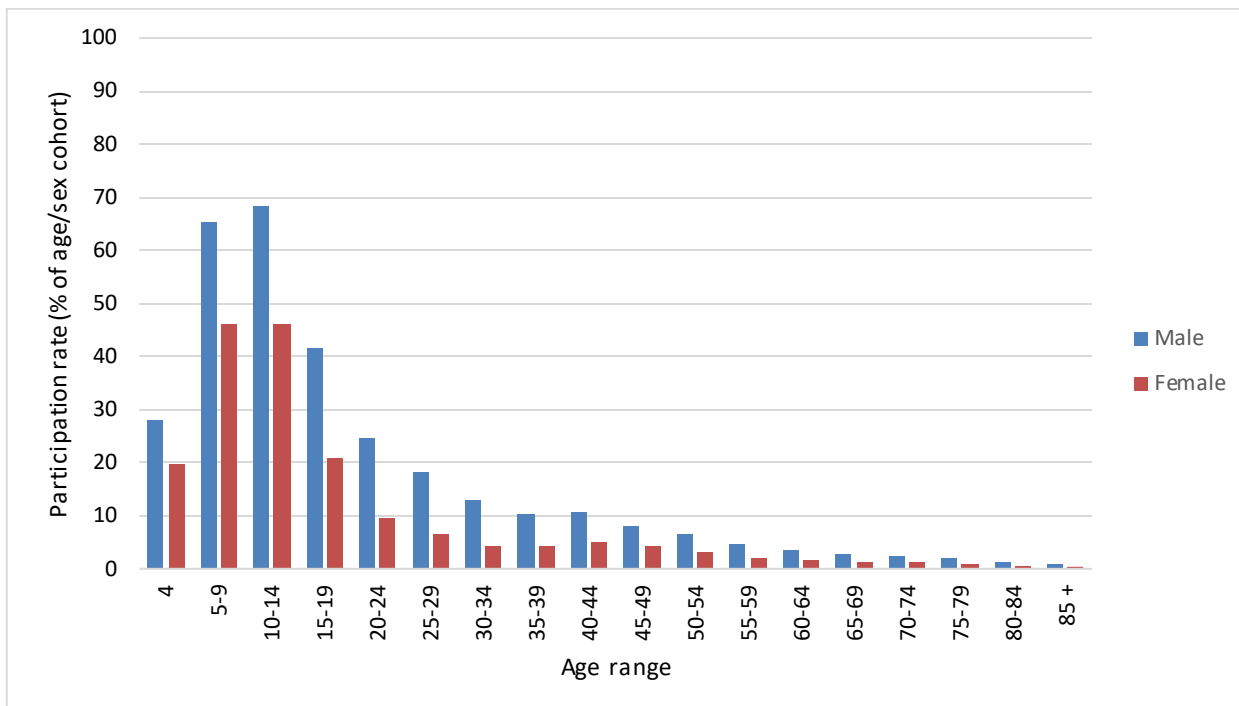


Figure 6. Participation rates, 2022, Victoria: by sex and age

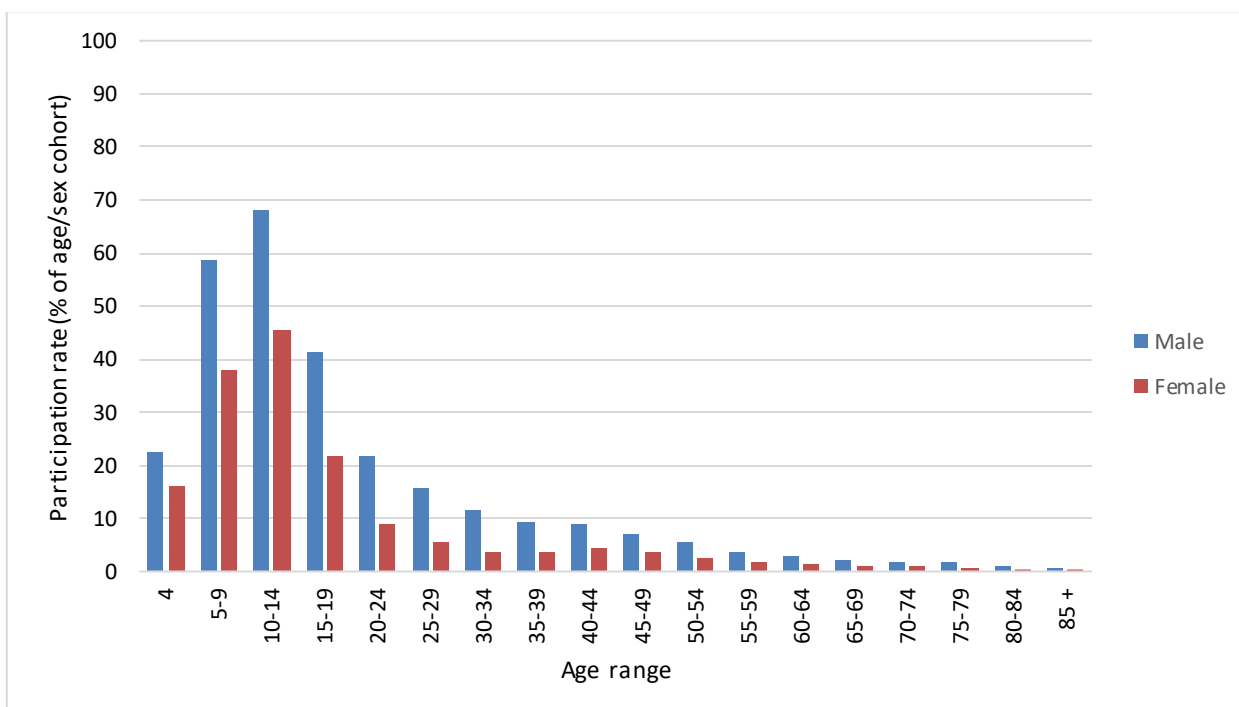


Figure 7. Participation rates, 2021, Victoria: by sex and age

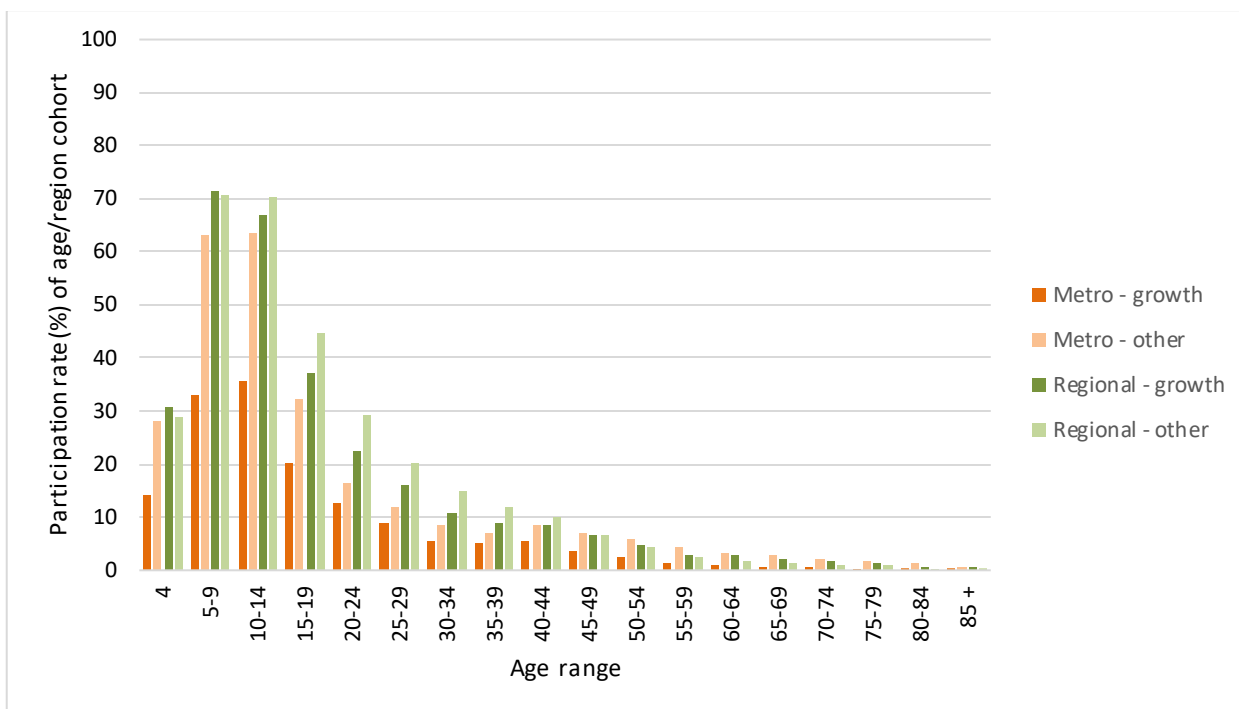


Figure 8. Participation rates, 2022, Victoria: by region and age

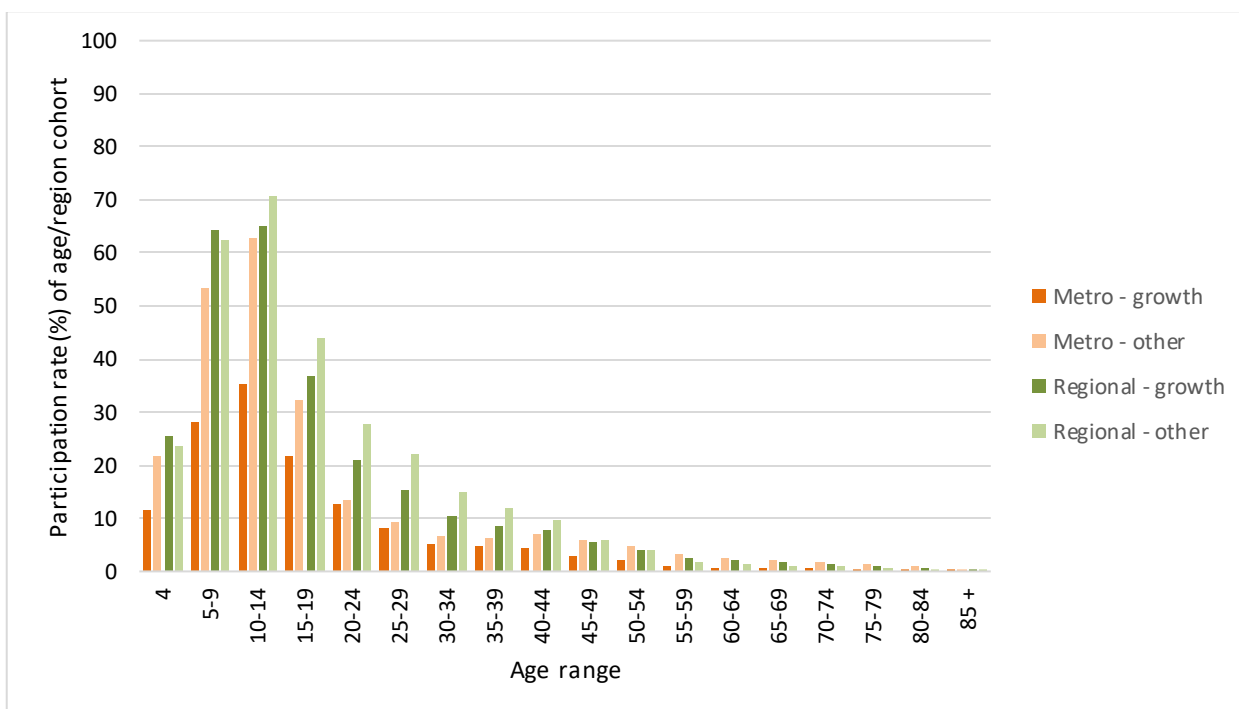


Figure 9. Participation rates, 2021, Victoria: by region and age

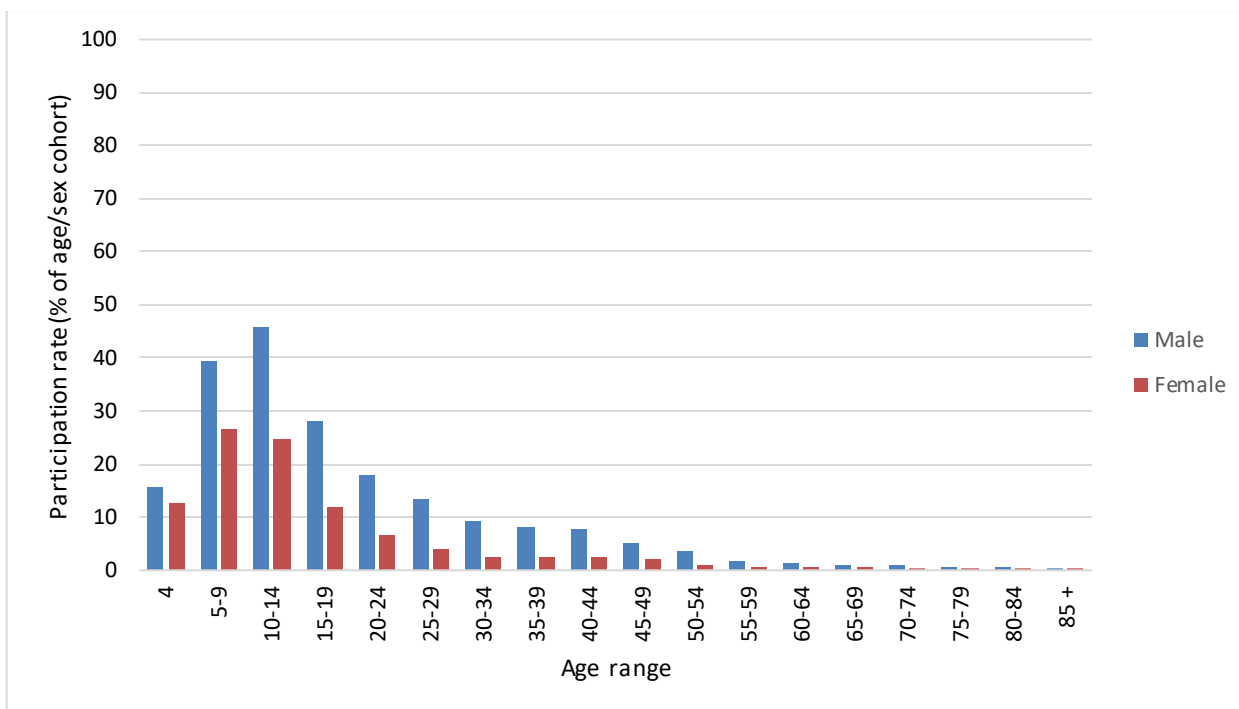


Figure 10. Participation rates, 2022, Metropolitan – Growth: by sex and age

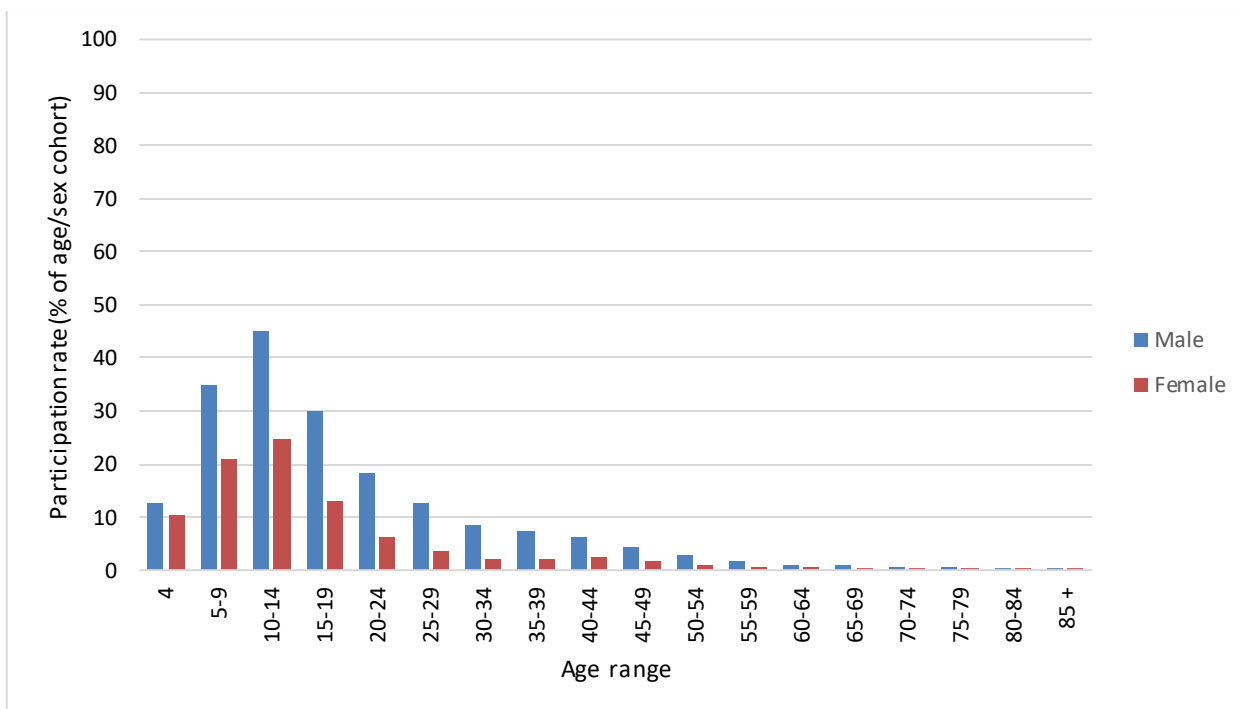


Figure 11. Participation rates, 2021, Metropolitan – Growth: by sex and age

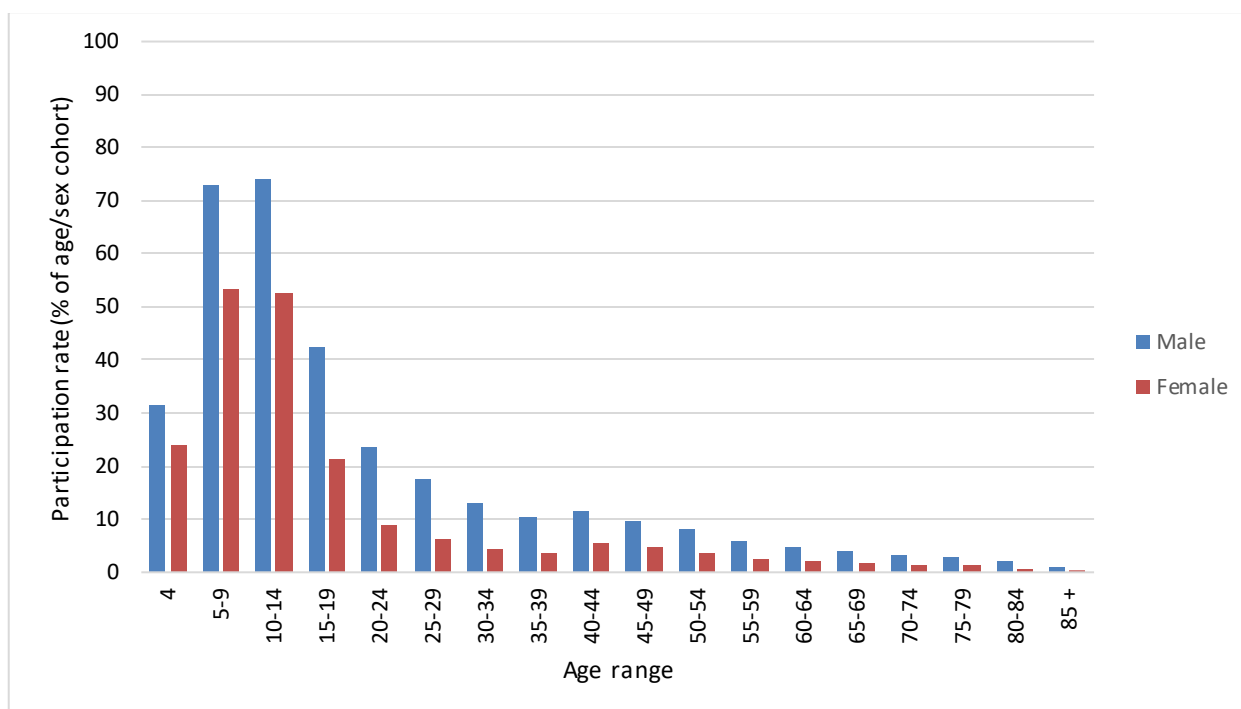


Figure 12. Participation rates, 2022, Metropolitan – Other: by sex and age.

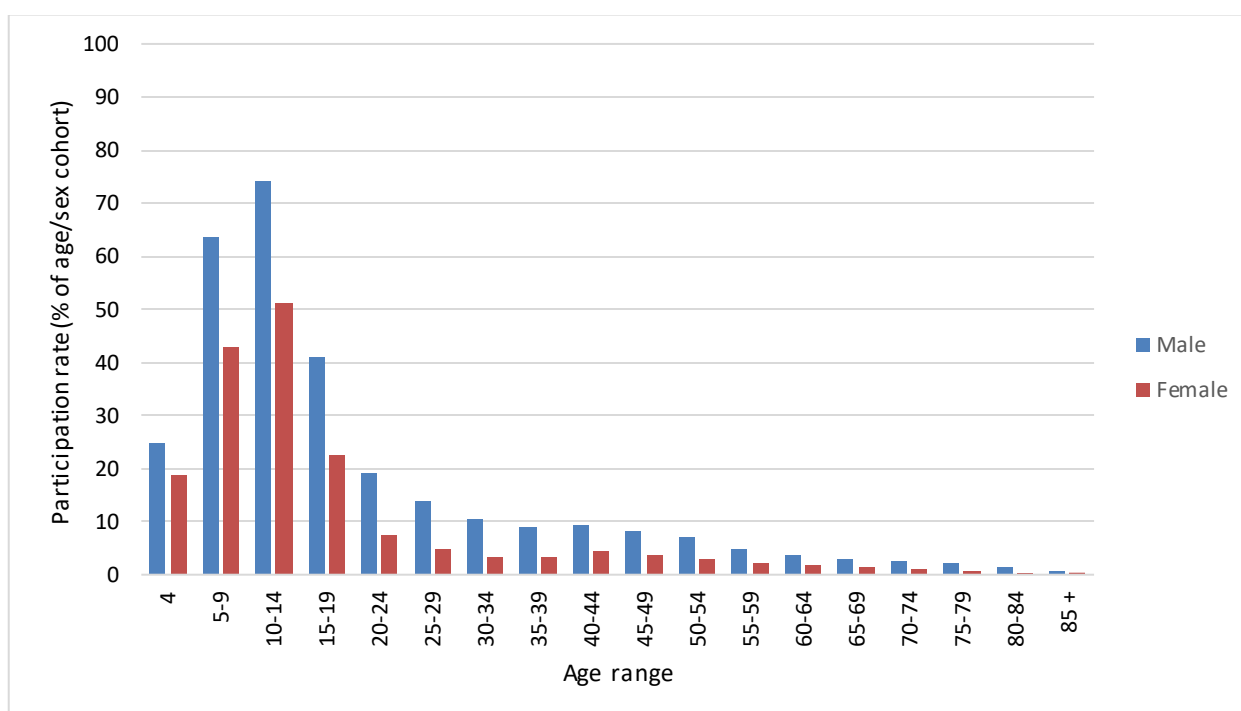


Figure 13. Participation rates, 2021, Metropolitan – Other: by sex and age

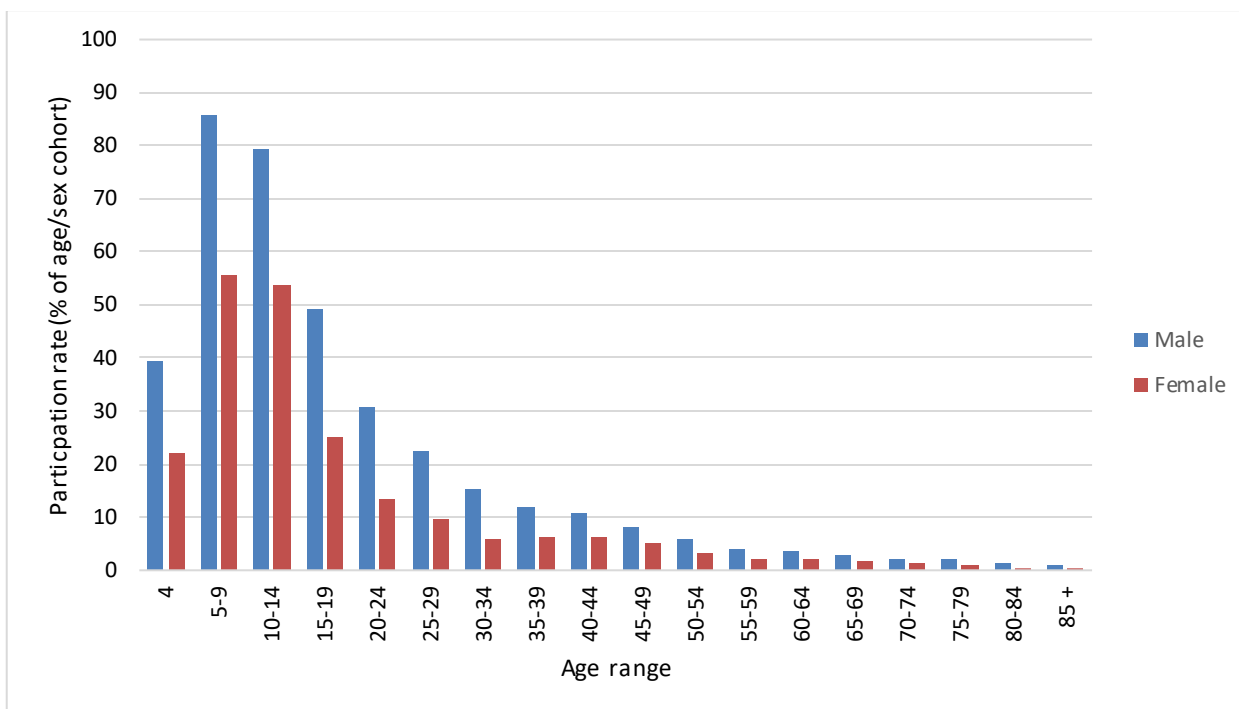


Figure 14. Participation rates, 2022, Regional - Growth: by sex and age

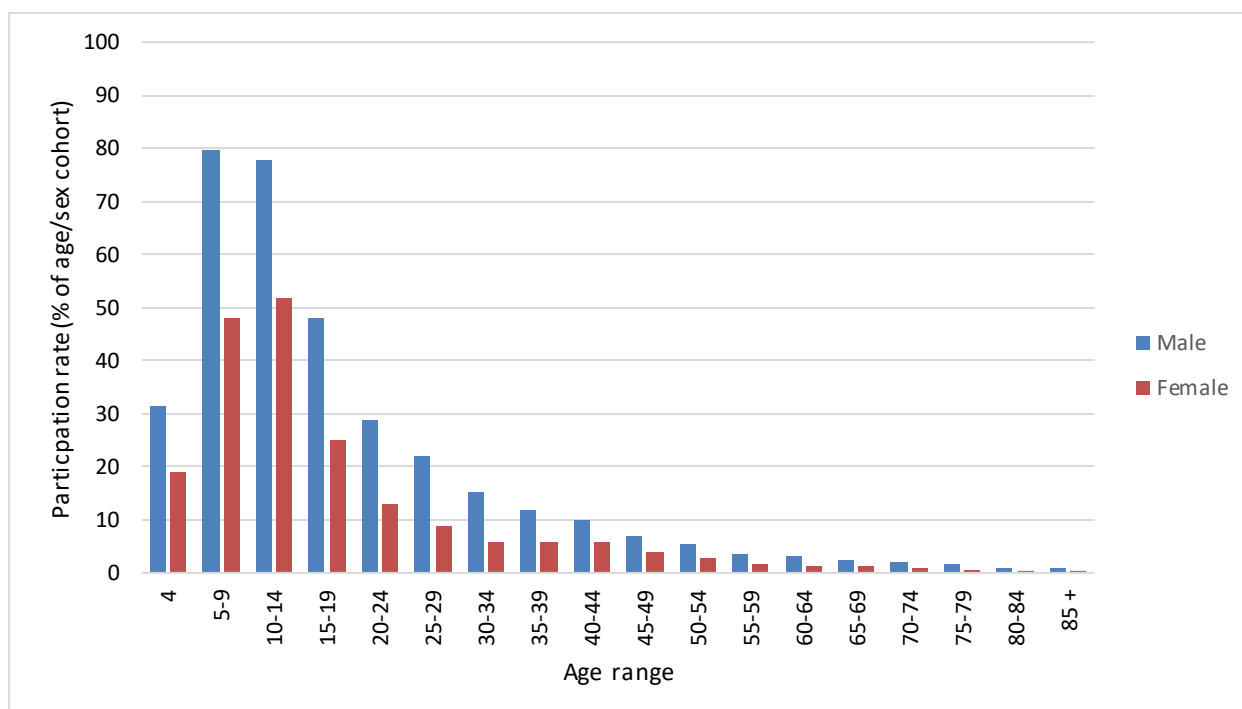


Figure 15. Participation rates, 2021, Regional - Growth: by sex and age

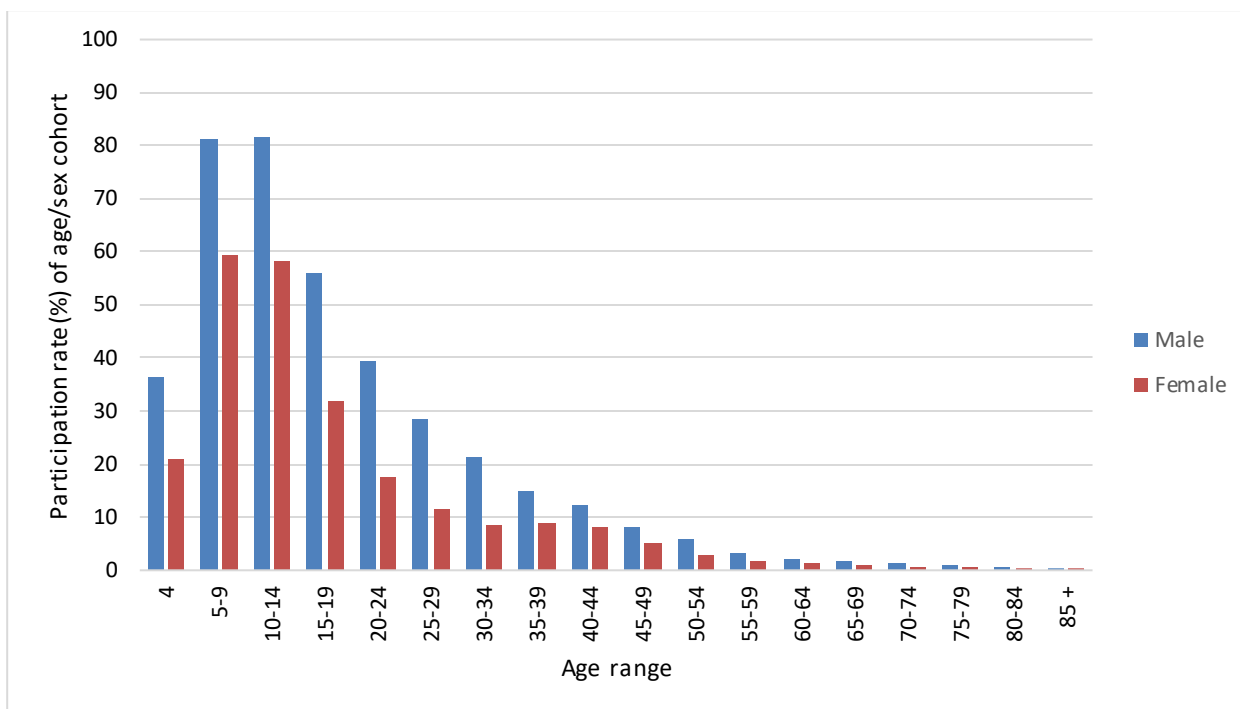


Figure 16. Participation rates, 2022, Regional – Other: by sex and age

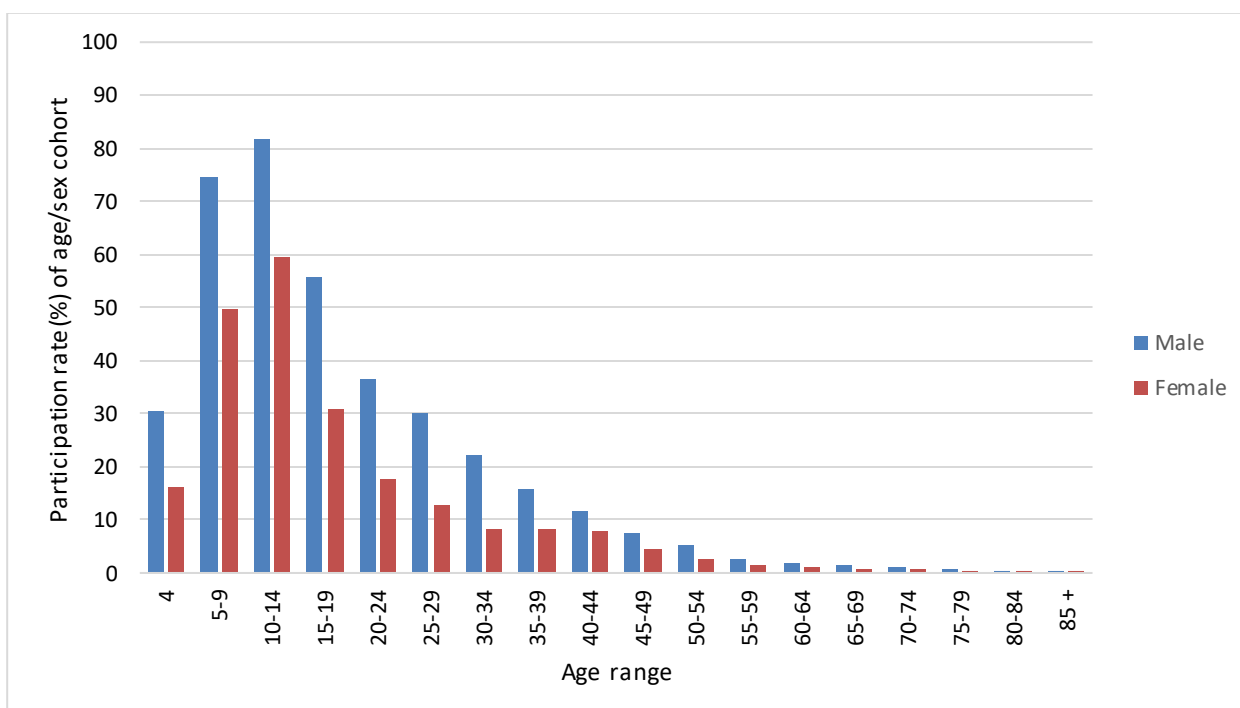


Figure 17. Participation rates, 2021, Regional – Other: by sex and age

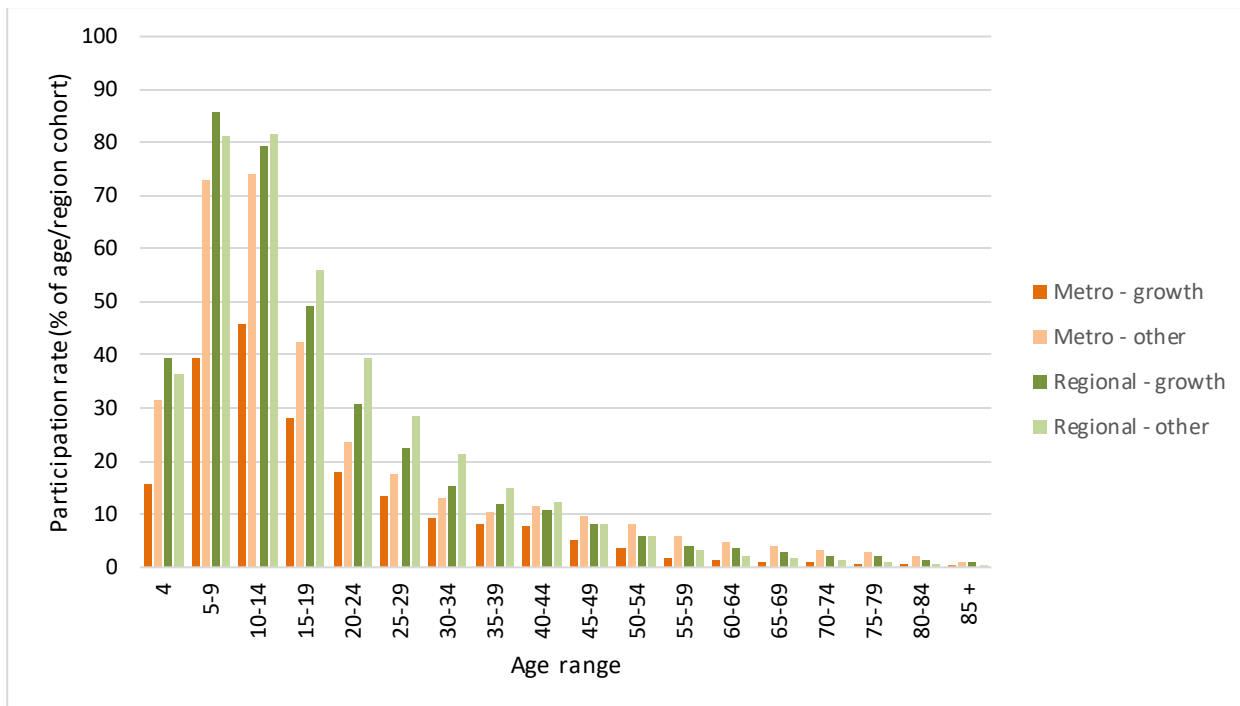


Figure 18. Participation rates, 2022, males: by region and age

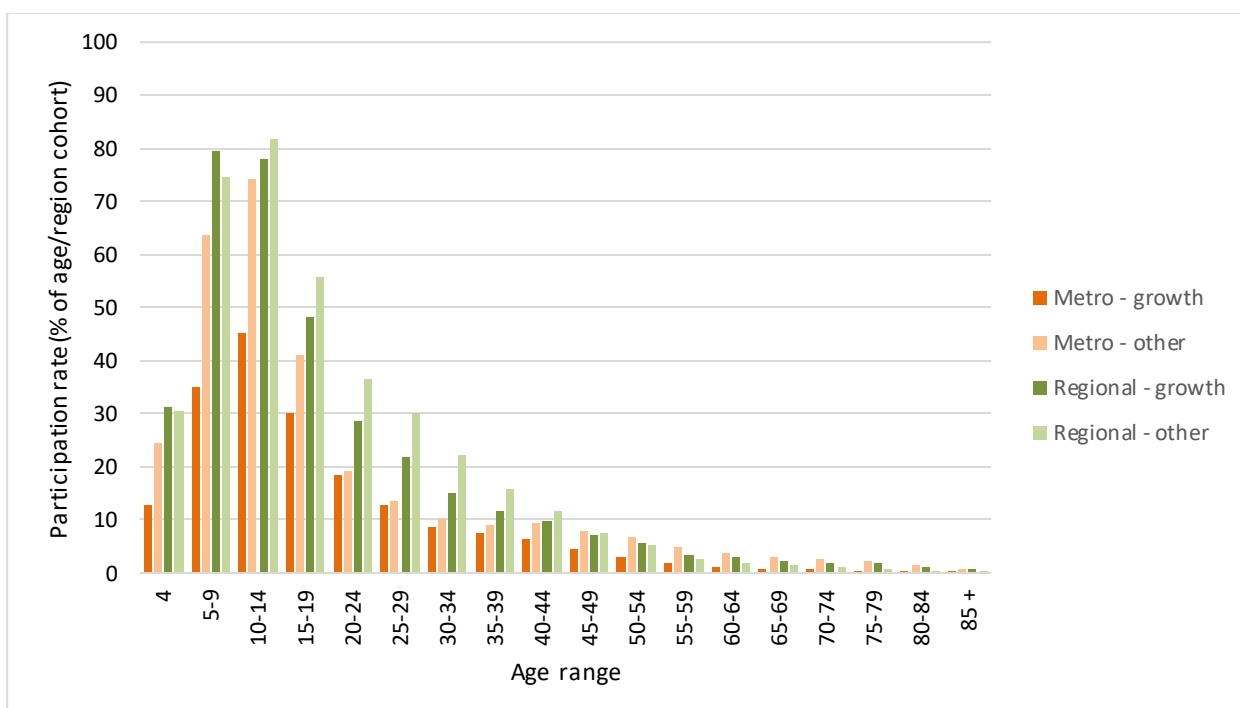


Figure 19. Participation rates, 2021, males: by region and age

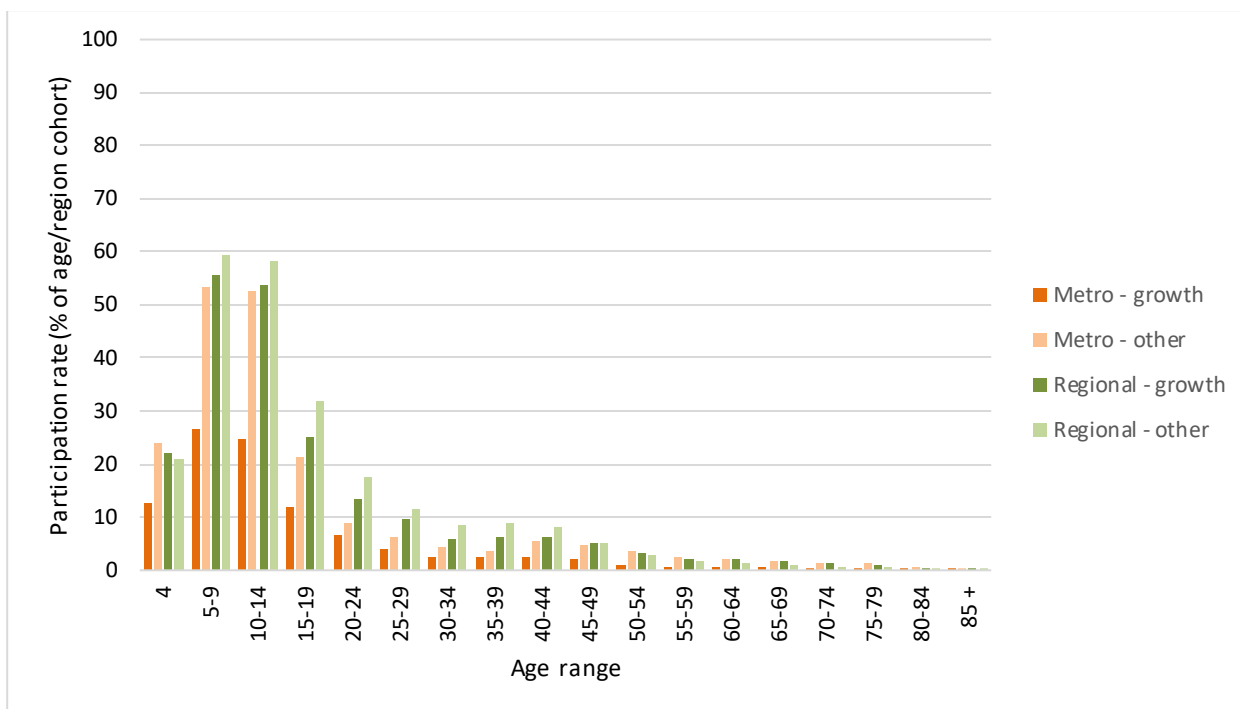


Figure 20. Participation rates, 2022, females: by region and age

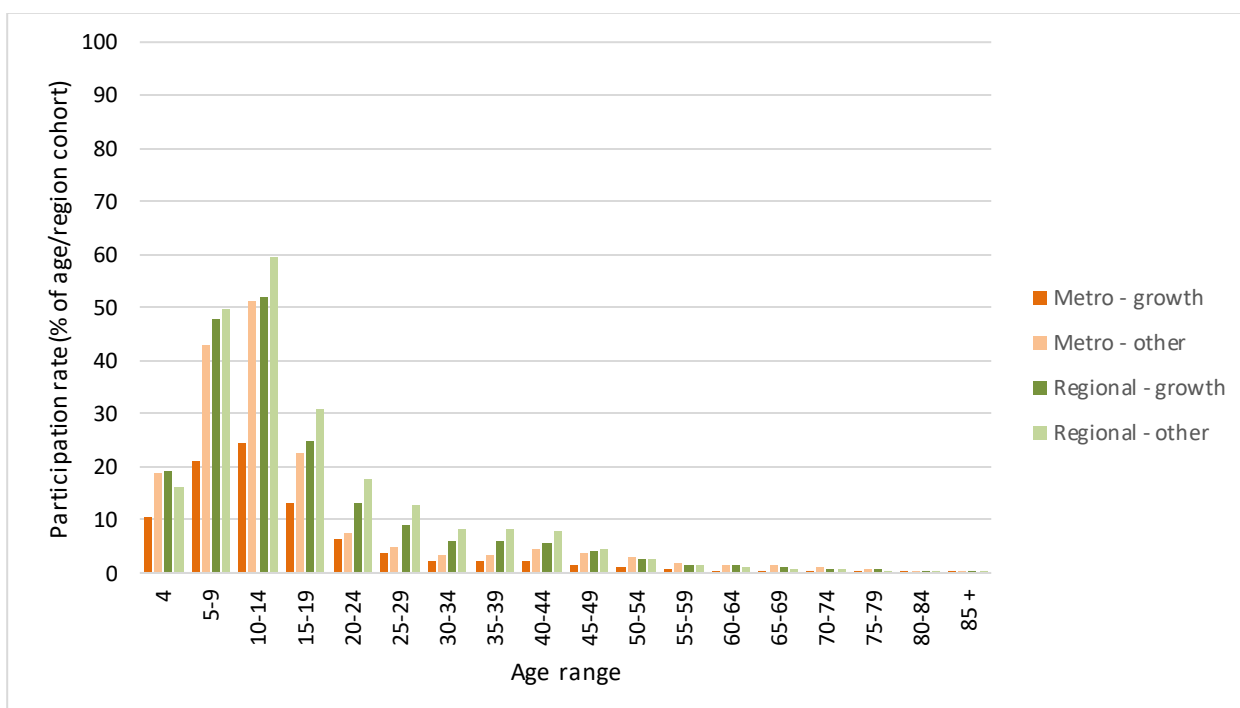


Figure 21. Participation rates, 2021, females: by region and age



Table 6. Participation rates, 2021, 2022, Victoria: by Local Government Area

LGA name	Particip.		Particip.		LGA name	Particip.		Particip.		LGA name	Particip.		Particip.	
	Rate ¹ 2021	Rank ² 2021	Rate ¹ 2022	Rank ² 2022		Rate ¹ 2021	Rank ² 2021	Rate ¹ 2022	Rank ² 2022		Rate ¹ 2021	Rank ² 2021	Rate ¹ 2022	Rank ² 2022
Metropolitan - growth					Nillumbik (S)	20.82	2	21.68	2	Hepburn (S)	10.94	39	11.42	40
Cardinia (S)	13.04	1	13.93	1	Port Phillip (C)	12.83	16	13.11	18	Hindmarsh (S)	19.03	12	19.18	14
Casey (C)	9.42	3	10.31	3	Stonnington (C)	15.18	10	15.73	12	Horsham (RC)	17.70	15	19.55	12
Hume (C)	8.09	6	8.98	6	Whitehorse (C)	14.39	13	15.11	13	Indigo (S)	15.36	25	15.43	28
Melton (S)	7.86	7	8.72	7	Yarra (C)	12.52	17	14.03	15	Latrobe (C)	13.77	35	14.45	35
Mitchell (S)	11.24	2	12.45	2	Yarra Ranges (S)	15.42	9	15.82	11	Loddon (S)	17.98	14	16.80	23
Whittlesea (C)	9.37	4	9.92	4	Regional - growth					Macedon Ranges (S)	17.37	17	18.43	17
Wyndham (C)	8.57	5	9.68	5	Ballarat (C)	14.55	6	15.06	6	Mansfield (S)	15.85	23	17.05	22
Metropolitan - other					Bass Coast (S)	15.52	3	16.01	4	Mildura (RC)	14.82	30	15.54	27
Banyule (C)	16.01	6	17.44	5	Baw Baw (S)	15.02	5	15.94	5	Moira (S)	17.29	18	18.09	18
Bayside (C)	24.62	1	25.43	1	Greater Bendigo (C)	15.99	2	16.89	2	Mount Alexander (S)	14.23	32	15.00	31
Boroondara (C)	20.54	3	20.97	3	Greater Geelong (C)	15.23	4	16.77	3	Moyne (S)	24.10	4	24.34	6
Brimbank (C)	6.25	24	6.72	24	Moorabool (S)	14.35	7	14.69	7	Murrindindi (S)	12.67	37	12.75	37
Darebin (C)	12.04	19	12.88	19	Surf Coast (S)	21.13	1	25.17	1	Northern Grampians (S)	15.35	26	16.63	25
Frankston (C)	13.16	15	13.93	16	Regional - other					Pyrenees (S)	15.48	24	14.46	33
Glen Eira (C)	15.78	7	16.40	8	Alpine (S)	14.49	31	16.14	26	Queenscliffe (B)	21.23	6	25.43	4
Greater Dandenong (C)	5.34	25	5.91	25	Ararat (RC)	13.91	34	14.03	36	South Gippsland (S)	20.61	7	20.82	7
Hobsons Bay (C)	14.62	12	16.35	9	Benalla (RC)	10.79	40	12.23	39	Southern Grampians (S)	29.34	2	30.54	1
Kingston (C)	16.20	5	16.96	6	Buloke (S)	30.96	1	29.26	2	Strathbogie (S)	13.92	33	15.20	29
Knox (C)	14.04	14	14.91	14	Campaspe (S)	16.88	21	16.68	24	Swan Hill (RC)	20.14	10	20.79	8
Manningham (C)	12.17	18	13.18	17	Central Goldfields (S)	15.17	29	15.13	30	Towong (S)	18.43	13	18.53	16
Maribymong (C)	10.22	21	11.40	22	Colac-Otway (S)	19.22	11	19.28	13	Wangaratta (RC)	15.18	28	17.15	21
Maroondah (C)	15.66	8	16.34	10	Corangamite (S)	25.97	3	26.55	3	Warmambool (C)	17.07	19	17.96	20
Melbourne (C)	7.34	23	8.32	23	East Gippsland (S)	13.18	36	14.45	34	Wellington (S)	17.48	16	18.61	15
Monash (C)	11.07	20	12.22	20	Gannawarra (S)	20.48	8	19.64	11	West Wimmera (S)	16.94	20	20.73	9
Moonee Valley (C)	14.92	11	16.59	7	Glenelg (S)	20.19	9	20.52	10	Wodonga (RC)	12.04	38	12.25	38
Moreland (C)	10.22	22	11.82	21	Golden Plains (S)	16.66	22	17.98	19	Yarriambiack (S)	22.35	5	24.88	5
Mornington Peninsula (S)	19.43	4	20.05	4	Greater Shepparton (C)	15.19	27	14.84	32					

¹ Number of player registrations per 100 residents

² In descending order of participation rate within each region. Rank derived from rate to two decimals

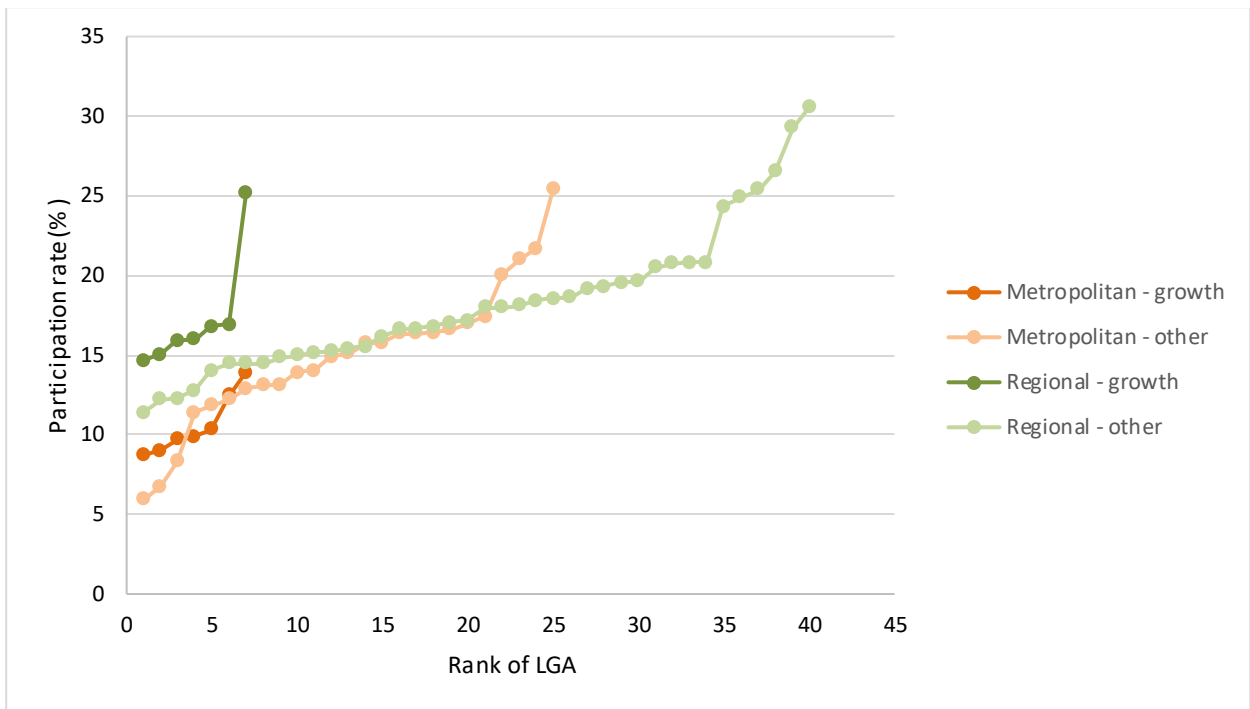
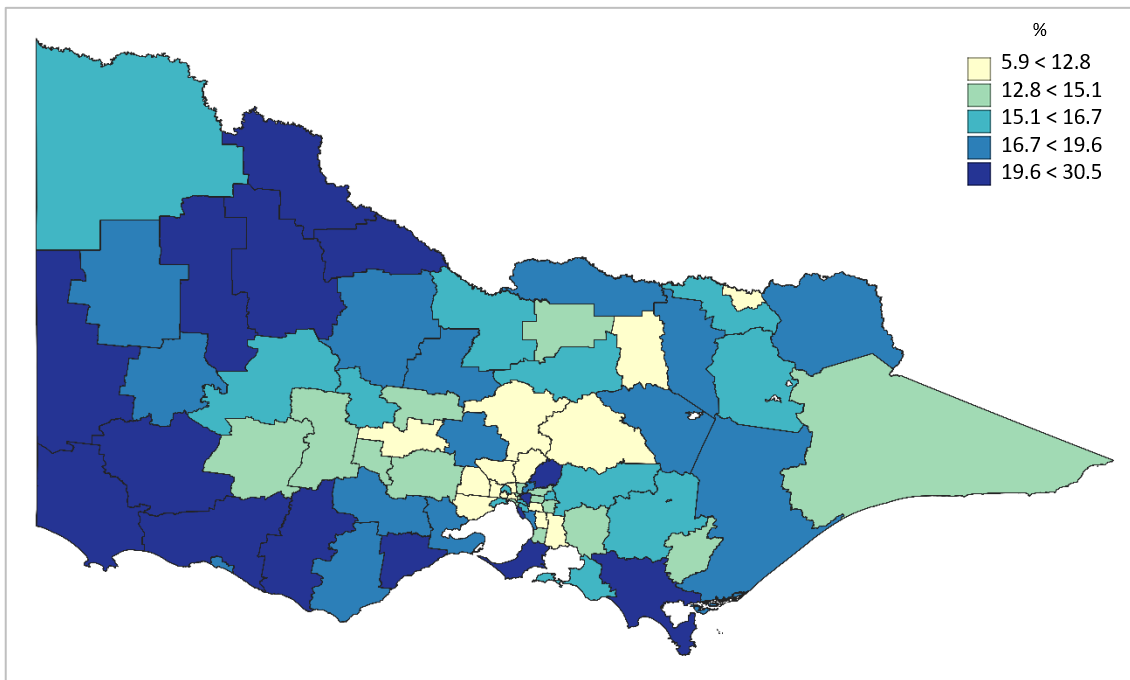
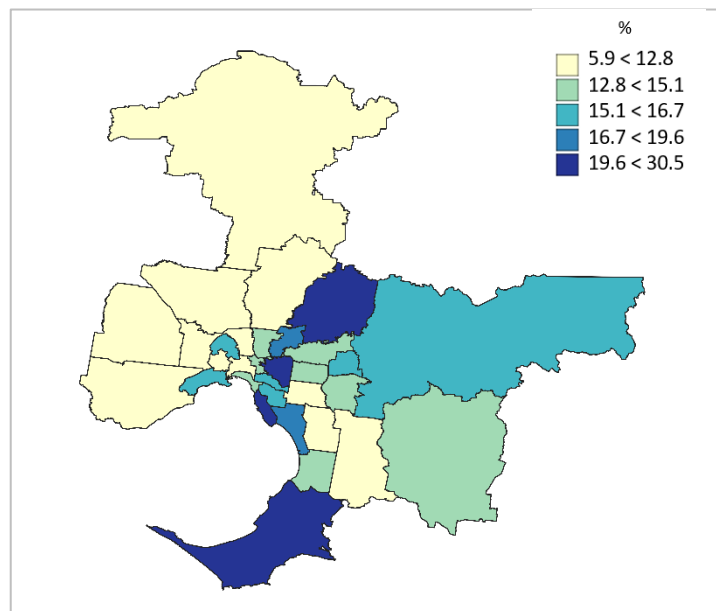


Figure 22. Participation rates, 2022: LGA by region

Map 1. Participation rate, 2022: Victoria, by LGA



Map 2. Participation rate, 2022: Metropolitan regions, by LGA



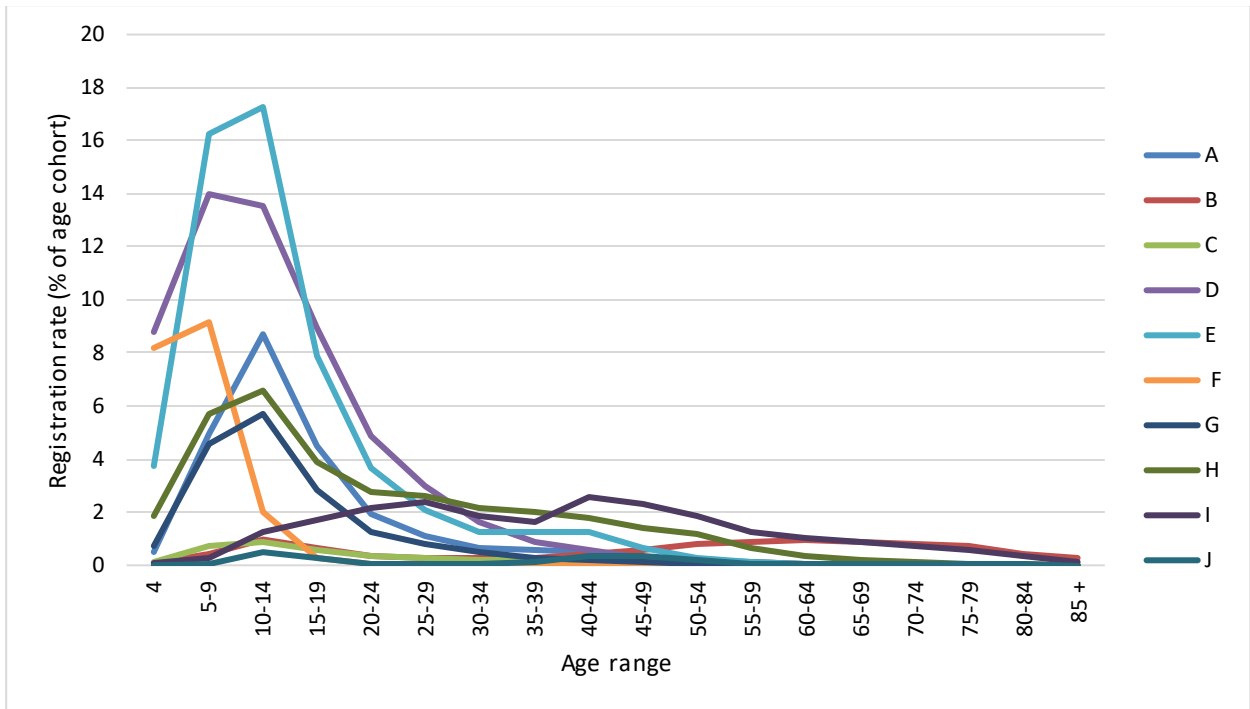


Figure 23. Participation rates, 2022, Victoria: by sport and age



Table 7. Participation rates and SEIFA rank, 2022, Victoria: by Local Government Area

LGA name	Participation		SEIFA		Rank diff. ⁴	LGA name	Participation		SEIFA		Rank diff. ⁴
	Rate ¹	Rank ²	Score ³	Rank ²			Rate ¹	Rank ²	Score ³	Rank ²	
Metropolitan - growth						Nilumbik (S)	21.7	2	1093	5	-3
Cardinia (S)	13.9	1	996	2	-1	Port Phillip (C)	13.1	18	1101	4	14
Casey (C)	10.3	3	991	3	0	Stonnington (C)	15.7	12	1120	3	9
Hume (C)	9.0	6	947	7	-1	Whitehorse (C)	15.1	13	1063	10	3
Melton (S)	8.7	7	981	5	2	Yarra (C)	14.0	15	1081	7	8
Mitchell (S)	12.5	2	972	6	-4	Yarra Ranges (S)	15.8	11	1017	21	-10
Whittlesea (C)	9.9	4	982	4	0	Regional – Growth (7)					
Wyndham (C)	9.7	5	1002	1	4	Ballarat (C)	15.1	6	965	5	1
Metropolitan - other						Bass Coast (S)	16.0	4	945	7	-3
Banyule (C)	17.4	5	1055	12	-7	Baw Baw (S)	15.9	5	976	4	1
Bayside (C)	25.4	1	1125	2	-1	Greater Bendigo (C)	16.9	2	961	6	-4
Boroondara (C)	21.0	3	1128	1	2	Greater Geelong (C)	16.8	3	980	3	0
Brimbank (C)	6.7	24	930	24	0	Moorabool (S)	14.7	7	988	2	5
Darebin (C)	12.9	19	1020	18	1	Surf Coast (S)	25.2	1	1064	1	0
Frankston (C)	13.9	16	981	23	-7	Regional – Other (40)					
Glen Eira (C)	16.4	8	1092	6	2	Alpine (S)	16.1	26	970	12	14
Greater Dandenong (C)	5.9	25	915	25	0	Ararat (RC)	14.0	36	931	34	2
Hobsons Bay (C)	16.3	9	1020	19	-10	Benalla (RC)	12.2	39	936	28	11
Kingston (C)	17.0	6	1042	14	-8	Buloke (S)	29.3	2	949	22	-20
Knox (C)	14.9	14	1032	16	-2	Campaspe (S)	16.7	24	943	23	1
Manningham (C)	13.2	17	1076	8	9	Central Goldfields (S)	15.1	30	870	40	-10
Maribyrnong (C)	11.4	22	1019	20	2	Colac-Otway (S)	19.3	13	939	24	-11
Maroondah (C)	16.3	10	1034	15	-5	Corangamite (S)	26.5	3	959	17	-14
Melbourne (C)	8.3	23	1071	9	14	East Gippsland (S)	14.5	34	937	27	7
Monash (C)	12.2	20	1060	11	9	Gannawarra (S)	19.6	11	934	30	-19
Moonee Valley (C)	16.6	7	1046	13	-6	Glenelg (S)	20.5	10	925	36	-26
Moreland (C)	11.8	21	1026	17	4	Golden Plains (S)	18.0	19	1004	3	16
Mornington Peninsula (S)	20.0	4	1013	22	-18	Greater Shepparton (C)	14.8	32	937	25	7



LGA name	Participation		SEIFA		Rank diff. ⁴
	Rate ¹	Rank ²	Score ³	Rank ²	
Regional – Other (40)					
Hepburn (S)	11.4	40	979	7	33
Hindmarsh (S)	19.2	14	931	33	-19
Horsham (RC)	19.6	12	958	18	-6
Indigo (S)	15.4	28	995	5	23
Latrobe (C)	14.4	35	916	39	-4
Loddon (S)	16.8	23	932	31	-8
Macedon Ranges (S)	18.4	17	1047	2	15
Mansfield (S)	17.0	22	986	6	16
Mildura (RC)	15.5	27	921	37	-10
Moira (S)	18.1	18	930	35	-17
Mount Alexander (S)	15.0	31	979	8	23
Moyne (S)	24.3	6	998	4	2
Murrindindi (S)	12.8	37	973	11	26
Northern Grampians (S)	16.6	25	921	38	-13
Pyrenees (S)	14.5	33	937	26	7
Queenscliffe (B)	25.4	4	1070	1	3
South Gippsland (S)	20.8	7	965	14	-7
Southern Grampians (S)	30.5	1	969	13	-12
Strathbogie (S)	15.2	29	957	19	10
Swan Hill (RC)	20.8	8	934	29	-21
Towong (S)	18.5	16	974	10	6
Wangaratta (RC)	17.2	21	962	15	6
Warrnambool (C)	18.0	20	961	16	4
Wellington (S)	18.6	15	954	21	-6
West Wimmera (S)	20.7	9	977	9	0
Wodonga (RC)	12.3	38	957	20	18
Yarriambiack (S)	24.9	5	932	32	-27

¹ Number of player registrations per 100 residents

² In descending order of participation rate within each region

³ in descending order of seifa score within each region

⁴ +ve difference: participation rate rank>SEIFA rank. -ve difference: participation rate rank<SEIFA rank. No difference:= participation rate rank expected for SEIFA

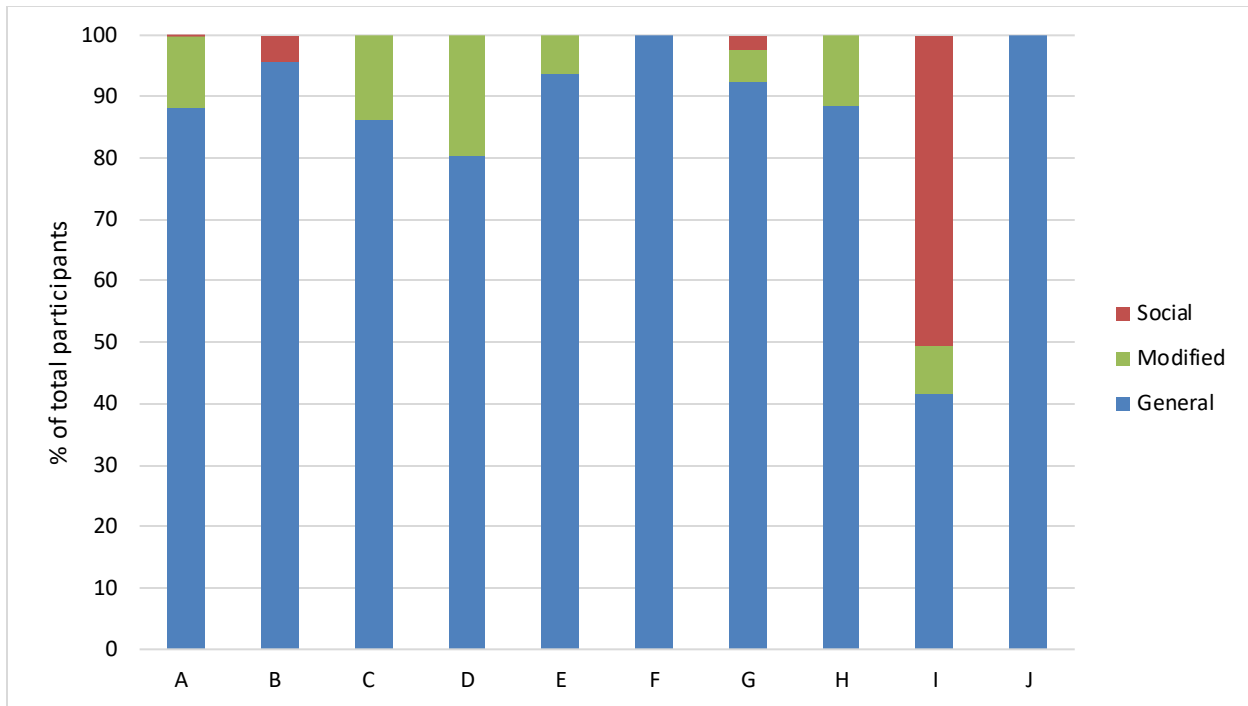


Figure 24. Sport-specific program profiles of registered participants, 2022, Victoria

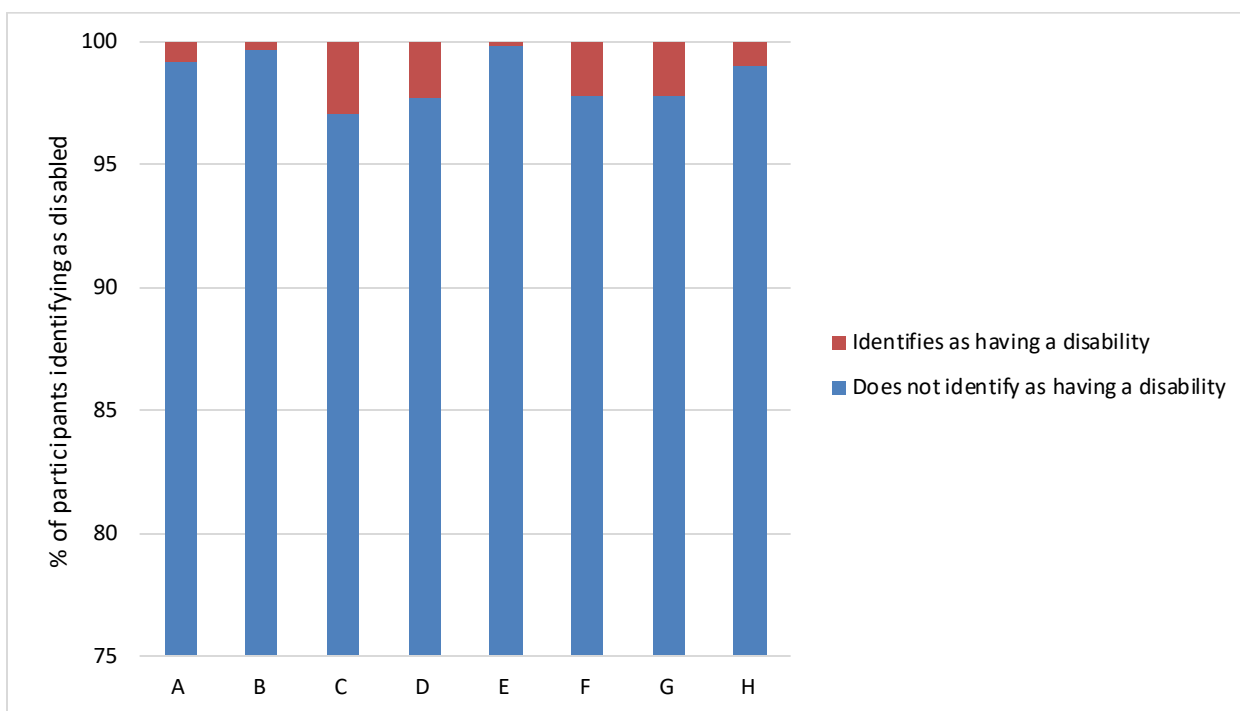


Figure 25. Sport-specific disability status profiles of registered participants, 2022, Victoria

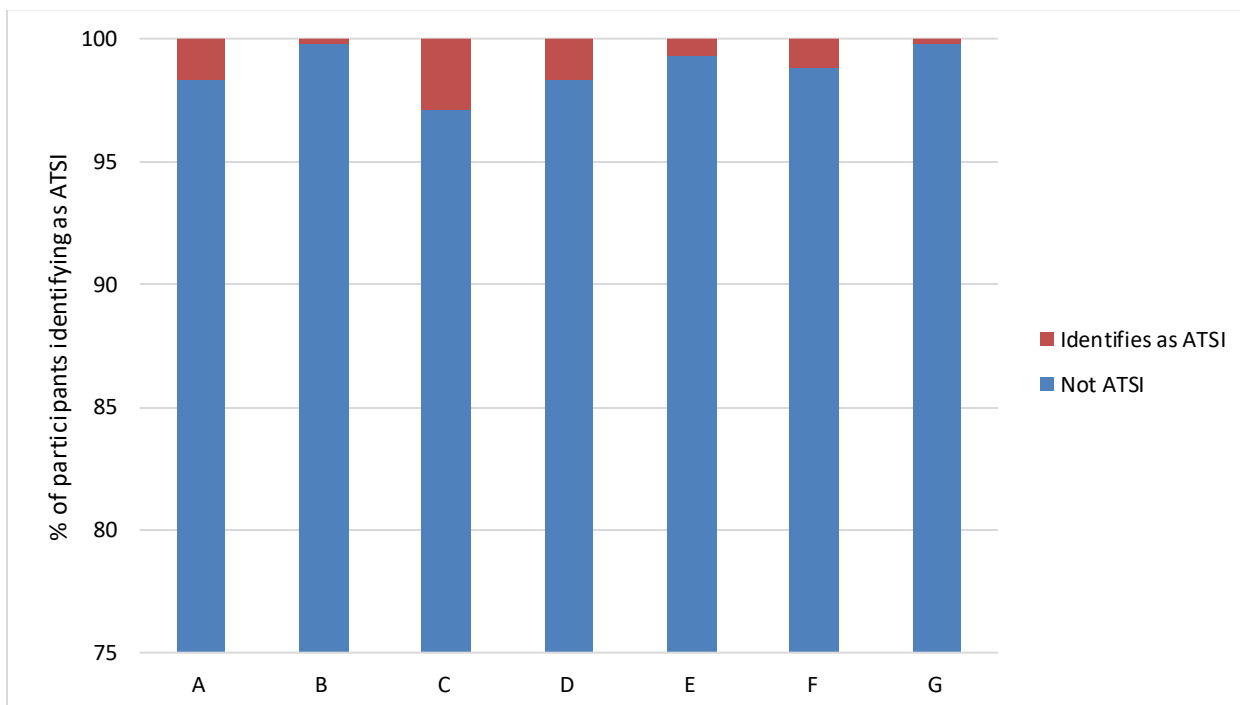


Figure 26. Sport-specific ATSI status profiles of registered participants, 2022, Victoria

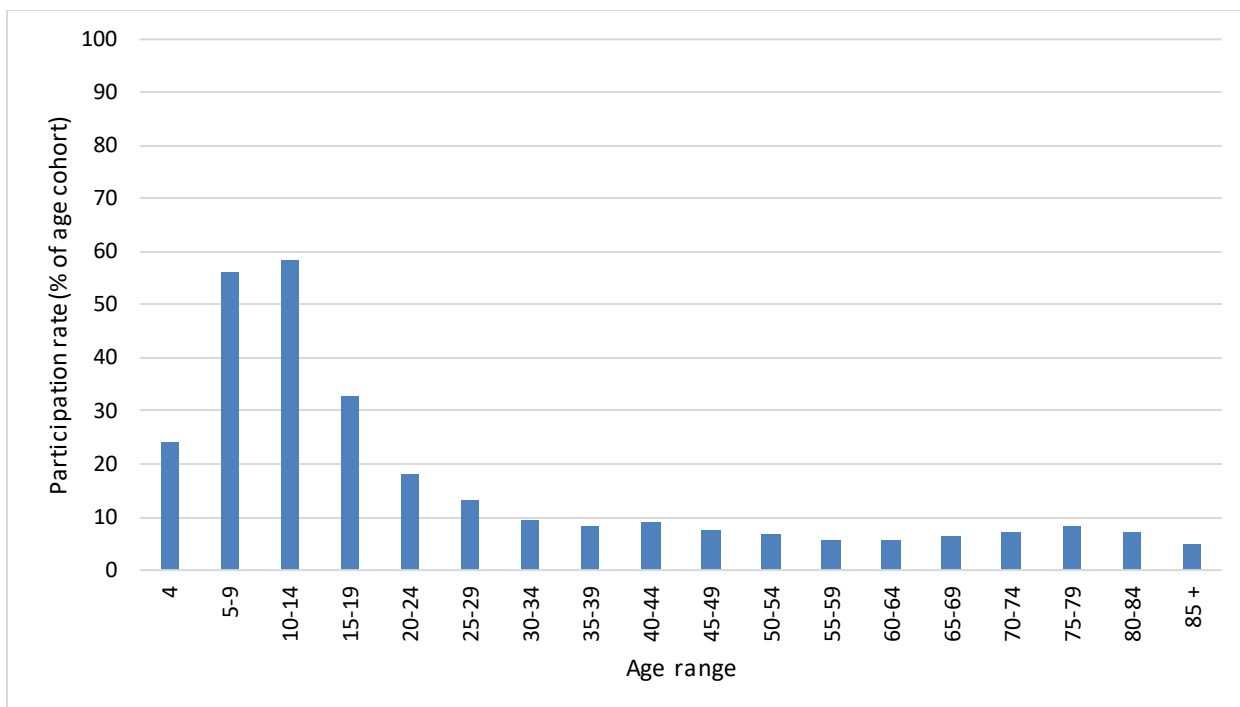


Figure 27. Age-specific participation rates: 2022, Victoria¹

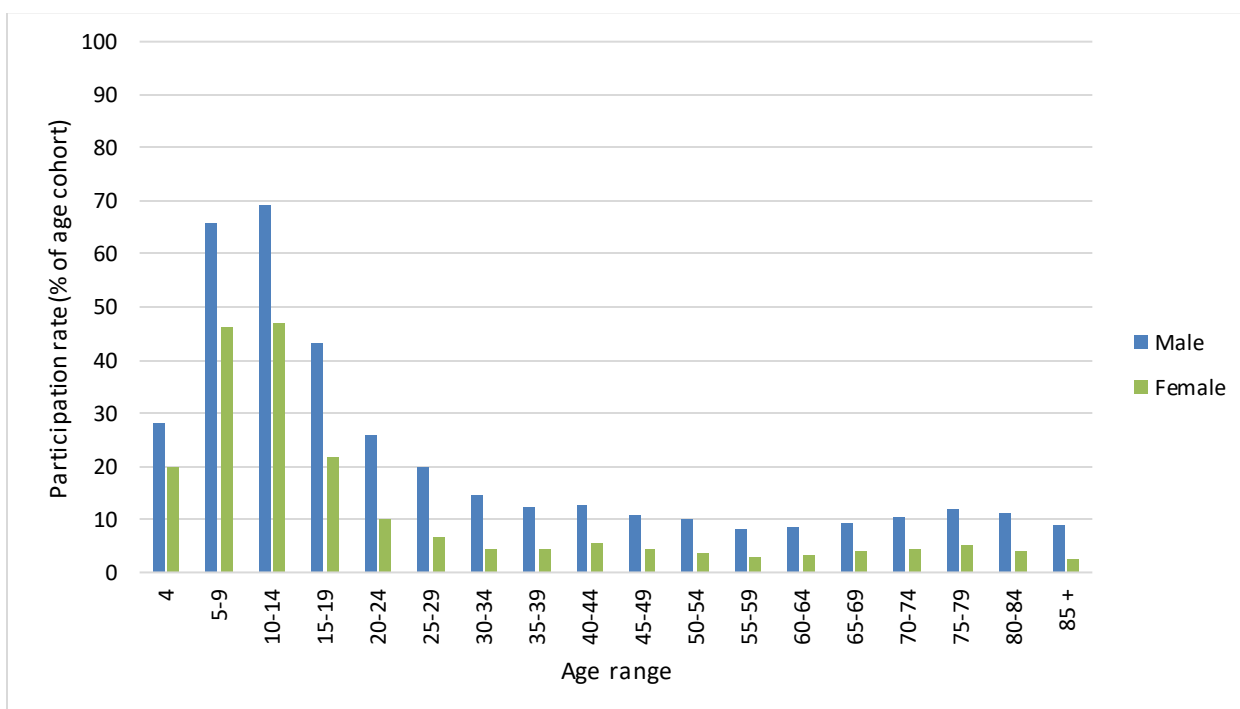


Figure 28. Age-specific participation rates: 2022, Victoria by sex¹



Table 8. Participation counts and rates^{1,2}, 2022, Victoria: by sex and age

Region	Sex		Age range																	Total	
			4	5-9	10-14	15-19	20-24	25-29	30-34	35-39	40-44	45-49	50-54	55-59	60-64	65-69	70-74	75-79	80-84		85+
Victoria	Persons	n	19,263	229,506	233,293	120,572	76,381	64,956	48,843	40,647	38,423	31,921	27,904	21,406	20,968	20,536	19,989	16,627	10,004	6,853	1,048,093
		Rate (%)	24.1	56.3	58.5	32.8	18.2	13.3	9.6	8.2	9.0	7.6	6.8	5.6	5.8	6.5	7.1	8.4	7.2	4.9	16.0
	Males	n	11,491	137,643	141,961	81,449	56,284	48,754	37,149	29,865	26,786	22,160	20,107	15,398	14,761	14,030	13,681	11,359	6,992	4,801	694,671
		Rate (%)	28.0	65.6	69.4	43.1	25.9	19.8	14.7	12.1	12.7	10.8	10.1	8.2	8.5	9.3	10.3	12.1	11.1	8.8	21.5
	Females	n	7,772	91,863	91,331	39,122	20,097	16,203	11,694	10,783	11,637	9,761	7,798	6,009	6,206	6,506	6,308	5,268	3,012	2,051	353,422
		Rate (%)	19.9	46.3	47.1	21.9	9.9	6.7	4.5	4.3	5.4	4.6	3.7	3.1	3.3	4.0	4.3	5.0	4.0	2.4	10.7

1 Aggregated over 13 sports.

2 Number of player registrations per 100 residents, expressed as a percentage.



Definition of the four Sport Participation Research Project (SPRP) regions

For the purpose of regional breakdowns included in standard reports prepared under the Sport Participation Research Project (SPRP), four regions have been defined by the SPRP research team in consultation with Sport and Recreation Victoria and VicHealth. Each region consists of a group of local government areas (LGAs), listed here in alphabetical order. B =Borough, C = City, RC = Rural City, S = Shire.

There are two driving principles behind the designation of these four regions:

- The patterns of sport participation in metropolitan and non-metropolitan areas are known to differ substantially.
- Within both metropolitan and non-metropolitan areas, projected growth in population is very uneven.

The Metropolitan - Growth region consists of the seven LGAs containing the four growth corridors designated by the Metropolitan Planning Authority. Six of the seven are within the current Melbourne Metropolitan Area designated by the State Government. The seventh, Mitchell Shire, is currently designated Non-metropolitan.

The Regional - Growth region consists of the LGAs containing the three largest regional centres, Geelong, Ballarat and Bendigo, together with four LGAs which are expected, according to State Government population projections, to experience high population growth during the period up to 2021. Each of these four LGAs is on the outer periphery of one or more of Melbourne, Geelong and Ballarat.

The Metropolitan - Other region consists of the remaining 25 LGAs within the designated Melbourne Metropolitan Area.

The Regional - Other region consists of the remaining 40 LGAs outside the designated Melbourne Metropolitan Area.

Metropolitan – Growth (7)

Cardinia (S)
Casey (C)
Hume (C)
Melton (C)
Mitchell (S)
Whittlesea (C)
Wyndham (C)

Metropolitan – Other (25)

Banyule (C)
Bayside (C)
Boroondara (C)
Brimbank (C)
Darebin (C)
Frankston (C)
Glen Eira (C)
Greater Dandenong (C)
Hobsons Bay (C)
Kingston (C)
Knox (C)
Manningham (C)
Maribyrnong (C)
Maroondah (C)
Melbourne (C)
Monash (C)
Moonee Valley (C)
Moreland (C)
Mornington Peninsula (S)
Nillumbik (S)
Port Phillip (C)
Stonnington (C)
Whitehorse (C)
Yarra (C)
Yarra Ranges (S)

Regional – Growth (7)

Ballarat (C)
Bass Coast (S)
Baw Baw (S)
Greater Bendigo (C)
Greater Geelong (C)
Moorabool (S)
Surf Coast (S)

Regional – Other (40)

Alpine (S)
Ararat (RC)
Benalla (RC)
Buloke (S)
Campaspe (S)
Central Goldfields (S)
Colac-Otway (S)
Corangamite (S)
East Gippsland (S)
Gannawarra (S)
Glenelg (S)
Golden Plains (S)
Greater Shepparton (C)
Hepburn (S)
Hindmarsh (S)
Horsham (RC)
Indigo (S)
Latrobe (C)
Loddon (S)
Macedon Ranges (S)
Mansfield (S)
Mildura (RC)
Moirā (S)
Mount Alexander (S)
Moyne (S)
Murrindindi (S)
Northern Grampians (S)
Pyrenees (S)
Queenscliffe (B)
South Gippsland (S)
Southern Grampians (S)
Strathbogie (S)
Swan Hill (RC)
Towong (S)
Wangaratta (RC)
Warrnambool (C)
Wellington (S)
West Wimmera (S)
Wodonga (C)
Yarriambiack (S)



The **Sport Participation Research Project** is funded by VicHealth and Sport and Recreation Victoria, and conducted by Professor Rochelle Eime, Melanie Charity, Dr Aurélie Pankowiak, Dr Jack Harvey and Professor Hans Westerbeek (Victoria University and Federation University Australia).

Contact: Professor Rochelle Eime
Federation University, Australia
r.eime@federation.edu.au
0418 800 521

Data accuracy

- There are some differences in reported participation counts and rates compared to the previously prepared annual reports for individual sports and the aggregated reports. For the present report we used the most current SSA and ABS data as available at time of reporting.
- Counts of participants in local government areas (LGAs) are estimates based on the fractional allocation of residential postcodes to LGAs using correspondence tables published by the Australian Bureau of Statistics and aligned to participant data year depending on availability. As such, counts in tables appear as whole numbers, rounded to the nearest whole number.
- Some postcode areas cross state borders, requiring mathematical 'border effect' adjustments. As such, counts are only reported for the 79 Victorian LGAs as described in the regions definition section above.
- Total Player estimate uses those aged 4-100 while the Total ERP uses the whole population (based on the assumption that those under 4 do not participate in registered sport).
- For the current reporting year, the Estimated Resident Population (ERP) used in calculations is from the previous year. This methodology is linked to the availability of this data from the ABS. For previous years reported within this report, the SSA and ERP data are year matched.

Reference

Australian Bureau of Statistics (2022). Regional population by age and sex. Available from: <https://www.abs.gov.au/statistics/people/population/regional-population-age-and-sex>

Australian Bureau of Statistics. Correspondences: Australian Statistical Geography Standard (ASGS) Edition 3. 2016. Available from: <https://www.abs.gov.au/AUSSTATS/abs@.nsf/DetailsPage/1270.0.55.003June%202020?OpenDocument>



Contact:

Professor Rochelle Eime
Email: r.eime@federation.edu.au
PASIGlobal.com

