

# SPORT PARTICIPATION RESEARCH PROJECT

# SPORT PARTICIPATION RATES- AGGREGATION OF 10 SPORTS, VICTORIA 2015-2021



PROF ROCHELLE EIME, MELANIE CHARITY,  
DR AURELIE PANKOWIAK, PROF HANS WESTERBEEK

March 2023





# TABLE OF CONTENTS

<i>LIST OF FIGURES</i>	p 03
<hr/>	
<i>LIST OF TABLES, LIST OF MAPS</i>	p 04
<hr/>	
<i>INTRODUCTION</i>	p 05
<hr/>	
<i>RESULTS</i>	p 06
<hr/>	



# LIST OF FIGURES

Figure 1. Overall participation rates: 2015 – 2021, Victoria: by age.....	11
Figure 2. Age-specific participation rates: 2019 – 2021, Victoria .....	13
Figure 3. Age-specific participation rates: 2019 – 2021, Females, Victoria.....	13
Figure 4. Age-specific participation rates: 2019 – 2021, Males, Victoria.....	14
Figure 5. Participation rates, 2020, 2021, Victoria: by age.....	20
Figure 6. Participation rates, 2021, Victoria: by sex and age.....	21
Figure 7. Participation rates, 2020, Victoria: by sex and age.....	21
Figure 8. Participation rates, 2021, Victoria: by region and age .....	22
Figure 9. Participation rates, 2020, Victoria: by region and age.....	22
Figure 10. Participation rates, 2021, Metropolitan – Growth: by sex and age .....	23
Figure 11. Participation rates, 2020, Metropolitan – Growth: by sex and age .....	23
Figure 12. Participation rates, 2021, Metropolitan – Other: by sex and age.....	24
Figure 13. Participation rates, 2020, Metropolitan – Other: by sex and age.....	24
Figure 14. Participation rates, 2021, Regional – Growth: by sex and age.....	25
Figure 15. Participation rates, 2020, Regional – Growth: by sex and age .....	25
Figure 16. Participation rates, 2021, Regional – Other: by sex and age.....	26
Figure 17. Participation rates, 2020, Regional – Other: by sex and age.....	26
Figure 18. Participation rates, 2021, males: by region and age .....	27
Figure 19. Participation rates, 2020, males: by region and age.....	27
Figure 20. Participation rates, 2021, females: by region and age.....	28
Figure 21. Participation rates, 2020, females: by region and age.....	28
Figure 22. Participation rates, 2021: LGA by region.....	30
Figure 23. Participation rates, 2021, Victoria: by sport and age.....	32



# LIST OF TABLES

Table 1. Age-specific participation numbers: 2015 – 2021, Victoria.....	11
Table 2. Participation counts and rates <sup>1,2</sup> , 2019 – 2021, Victoria: by sex and age.....	12
Table 3. Participation counts and rates <sup>1,2</sup> , 2020 & 2021, Victoria: by region, sex and age.....	15
Table 4. Participation counts and rates <sup>1,2</sup> , 2021, Victoria: by region, sex and age.....	18
Table 5. Participation rates, 2020, 2021, Victoria: by Local Government Area.....	29
Table 6. Participation rates and SEIFA rank, 2021, Victoria: by Local Government Area.....	33

# LIST OF MAPS

Map 1. Participation rate, 2021: Victoria, by LGA.....	31
Map 2. Participation rate, by LGA in Metropolitan regions, 2021.....	31



# INTRODUCTION

## Participation rates in club-based sport

This report provides the results of an analysis of participation in Victorian club-based sport during the 2019 – 2021 period. It combines data from Victorian State Sporting Associations (SSAs) for ten major sports: Australian rules football, Basketball, Cricket, Football (Soccer), Gymnastics, Hockey, Netball, Sailing, Swimming, and Tennis. Two of the participating sports (Bowls and Golf) were unable to provide 2019 data and could not be used in comparisons.

A participant, or player, is defined as a registered member of a Victorian sporting club or program that was affiliated with one of the 10 SSAs, in the 2021 registration year designated by each sport, who was aged between 4 and 100 years and resided in Victoria. These SSAs recorded a total of 928,608 player registrations in 2021. In order to provide consistency across all breakdowns by region, sex and age, those for whom residential postcode, sex or birthdate was missing or invalid (6.5% of registrations; see Table 1 for more detail) were excluded from the analysis, and adjustments to counts were made in postcodes that were partly allocated to a Local Government Authority (LGA) outside Victoria (see the note on data accuracy on page 36 of this report). This report provides a summary of the 866,736 player registrations for which complete and valid data were recorded. Registration data were provided by each SSA in anonymized form. Consequently, it should be noted that, because a person could be a registered player of more than one sport, and an individual player's data could not be linked across sports, when data for multiple sports are combined the total number of registrations is greater than the number of individual players.

The variable tabulated and graphed, for Victoria as a whole and for each sex and/or geographical region, is the age-specific participation rate, defined as the number of player registrations in each age range, expressed as a percentage of the estimated resident population (ERP) in that age range.



# RESULTS

## 1 Sport participation in 2021

### Overall age-group participation in 2021

- When combining the ten sports, in 2021 overall participation was highest in children aged 5–14 years, with participation rates highest for those aged 10–14 years (57%), followed by those aged 5–9 years (49%) (Table 4, Figure 5).
- After participation rates peaked in children aged 10–14 years (57%), rates decreased considerably (by more than 25% points) in adolescents (15–19 years) (to 32%). This was followed by another large decline in young adults (20–24 years) (to 15%).
- Participation rates continued to decline progressively across the lifespan. Between 8–5% of Victorian adults aged 30–49 years participated in the 10 sports, and fewer than 5% of Victorians aged 50 years and older participated in one of the ten sports (Table 4, Figure 5).

### Sex differences

- In 2021, The overall male participation rate (17%) was almost twice that of females (9%). Participation rates were higher for males than females in all age groups (Table 4, Figure 6).
- Participation rates of both males and females were highest in children aged 10–14 years (68% and 46% respectively) (Table 4, Figure 6).
- The largest absolute difference (based on % points) in participation rates between males and females occurred in children aged 10–14 years (difference of 23% points: males 68%; females 46%). The difference between males' and females' participation rates was also very high in young children (5–9 years) and in adolescents (15–19 years): difference of approximately 20% points for both groups (Table 4).
- In some older age groups, the proportional difference between male and female participation rates were greater. Male participation rates were three or more times higher than that of female for those aged 25–39 and 75 and older (Table 4).

### Region differences

- Metropolitan areas had larger participation numbers (608,081) than regional areas (258,655). However, overall participation rates were higher in regional areas (Regional 16.5%, Metropolitan 11.9%) (Table 4).
- The age group breakdown shows that regional areas also had higher participation



rates than metropolitan areas across the lifespan (Table 4, Figure 8).

- In all regions, the highest participation rates were for children aged 10–14 years. Regional – Other areas had the highest participation rates in the 10–14 age group (71%), followed by Regional – Growth areas (65%), Metropolitan – Other (63%), and Metropolitan – Growth (35%) (Table 4, Figure 8).

### **Sex differences per region**

- Male and female participation patterns across the lifespan were similar across regions, with participation generally peaking for children aged 10–14 years and decreasing consistently with increasing age (Table 4, Figures 18 and 20).
- Participation rates were higher for males than females in all four regions and across all age groups and the biggest differences in % points were found in children and youth (5–19 years).

### **LGA differences**

- There was considerable variation in participation rates across Victorian LGAs, and between LGAs within the four designated regions (Table 6, Figure 22).
- In 2021, the lowest participation rate was 5% in Greater Dandenong, in Metropolitan – Other. The lowest participation rates in the other regions were as follows: Metropolitan – Growth: Melton, 8%; Regional – Growth: Ballarat, 15%; and Regional – Other: Benalla, 11% (Table 6).
- The highest participation rate was 31% in Buloke, in Regional – Other. The highest participation rates of the other regions were as follows: Regional – Growth: Surf Coast, 24%; Metropolitan – Growth: Cardinia, 13%; and Metropolitan – Other: Bayside, 23% (Table 6).
- The graphic representation of LGAs participation ranking within each of the four regions (Figure 22) shows a relatively linear progression between the LGAs with the lowest participation rates and those with the highest rates. However, for most regions, the LGAs with most participants had participation rates that were considerably higher than the rest of the LGAs within that region (Figure 22).
- Within the regional LGAs, there was generally higher participation in the western parts of the State. South-eastern LGAs also had higher participation rates (Map 1).
- Within the metropolitan LGAs, there was generally higher participation in the east of Melbourne (Map 2).

### **Sport-specific demographic variables**

- Seven sports provided data on the number of participants indicating whether they reported having a disability.
- Eight sports provided data on the number of participants indicating whether they identified as Aboriginal or Torres Strait Islander.



## 2. The impact of changing COVID-19 restrictions on sport participation

### Overall changes 2019 to 2021

- Between 2020 and 2021, overall participation rates (for the 10 sports combined) increased for all age groups between 4 and 39 years, and participation rates for those aged 40 and older remained similar. The largest proportional increase was amongst children aged 5–9 years (increase of 16.1% compared to 2020 participation rate, equivalent to 67,250 additional players). The next largest increase was in young children aged 4 (11.9%, 9,657 players) and in adolescents (15–19 years) (10.1%, 31,199 players) (Table 3, Figure 5).
- While participation in children (4–14 years) increased from 2020 to 2021, the 2021 participation rates were still lower than pre-COVID, 2019 rates. In contrast, for adolescents (15–19 years) and all adults, participation rates in 2021 were higher than 2019 participation rates (Figure 1, Table 2).

### Changes in overall male and female participation

- Between 2020 and 2021, overall participation rates increased for both males and females, but the increase in male participation (4.7%; 156,567 players) was twice that of females (increase of 2.2; 72,907 players) (Table 3).
- Male participation rates increased for all age groups, with higher increases in children and young adults (between 6% and 20% points increases for those between 4 and 29 years), and lower increases (below 1%) for adults aged 45 and above. The greatest increase was in young boys aged 5–9 years and 4 years (20.0% and 15.7% points respectively) (Table 3, Figures 6 & 7)
- Female participation rates increased in almost all age groups, also with higher increases in children and young adults (between 2% and 12% points increases for those between 4 and 29 years), and lower increases (below 1%) in adults aged 40 and above. Participation rates for women aged 40–45 and 80-plus stayed similar. The highest increase was in young girls aged 5–9 (12.1%) and 4 years (7.9%) (Table 3, Figures 6 & 7).

### Regional changes

- Overall participation rates increased in all regions between 2020 and 2021. The greatest increase was seen in Regional – Other regions (6.7%), followed by Regional – Growth (4.5%), Metropolitan – Other (2.8%) and Metropolitan – Growth (2.3%) (Table 3).
- Participation rates increased for all age groups in all regions between 2020 and





2021, except for adult aged 45–49 years in Metropolitan areas and Regional – Growth for which participation remained relatively similar. Similar to Victoria as a whole, larger increases were generally found for children and young adults (under 30). Regional areas had larger increases than metropolitan areas (Table 3, Figures 10–17).

- The largest increase in participation rate was in children 5–9 years, in all regions (Metropolitan – Growth 8.0%, Metropolitan – Other 14.9%, Regional – Growth 24.7% and Regional – Other 31.5%). The next highest increase was shown in different age groups across the regions, but this was always in children or adolescents: in Metropolitan – Other and Regional – Growth 4-year-olds had the highest increase (12.8% and 17.3% respectively), in Regional – Other (18.7%) increase was highest in children aged 10–14 years and in Metropolitan – Growth, increase was highest in adolescents (15–19 years) (6.6%) (Table 3).

### **Changes in male and female participation within regions**

- Overall participation rates increased for both females and males in all four regions between 2020 and 2021 (Table 3), with increases much higher in males than in females. The largest increase was shown in Regional – Other for both males and females (increases of 8.4% and 5.1% respectively) (Table 3, Figures 18–21).
- Participation rate increases across all regions were generally higher in children, adolescents and young adults under 30.
- Increases were higher for males than females also in all age groups across the four regions, and generally much higher in younger age groups (Table 3).
- The highest increase in participation for both males and females, and in all four regions was in young children (5–9 age years). Regional areas had greater increases in this age group than Metropolitan areas (Regional – Growth: males 31.4%, females 17.6%, Regional – Other: males 37.4%, females 25.3%) (Table 3, Figures 18–21).

### **Changes within LGAs**

- All LGAs increased participation rates between 2020 and 2021. The largest increase in participation rate occurred in Buloke, in Regional – Other, with a change of 17.9% (more than twice 2020 participation rates) The smallest increase was 1.0% in Melbourne (Metropolitan – Other) (Table 5).
- By region:
  - Metropolitan-Growth: The LGA with the largest increase in participation rate was Cardinia (3.4%). Casey had the lowest rate rise (1.8%).
  - Metropolitan-Other: The LGA with the largest increase in participation rate was Boroondara (5.3%). Melbourne had the lowest rate rise (1.0%).
  - Regional-Growth: The LGA with the largest increase in participation rate was Surf Coast (6.4%). Greater Bendigo had the lowest rate rise (3.9%).



- Regional-Other: The LGA with the largest increase in participation rate was Buloke (17.9%). Benalla had the lowest rate rise (3.5%).

### **Gender differences in sport-specific participation changes**

Males had an increase in overall participation rates (2020 → 2021) greater than that of female, in four sports. In two sports, the increase in male participation was marginally higher than increase in female participation. In two sports, increase in participation was higher for females than for males (Table 6).

### **Age differences in sport-specific participation changes**

Participation rates (2020 → 2021) increased for those children, adolescents and adults under 39 years in the majority of the sports. Any decrease in participation in these age groups was marginal (Table 6).

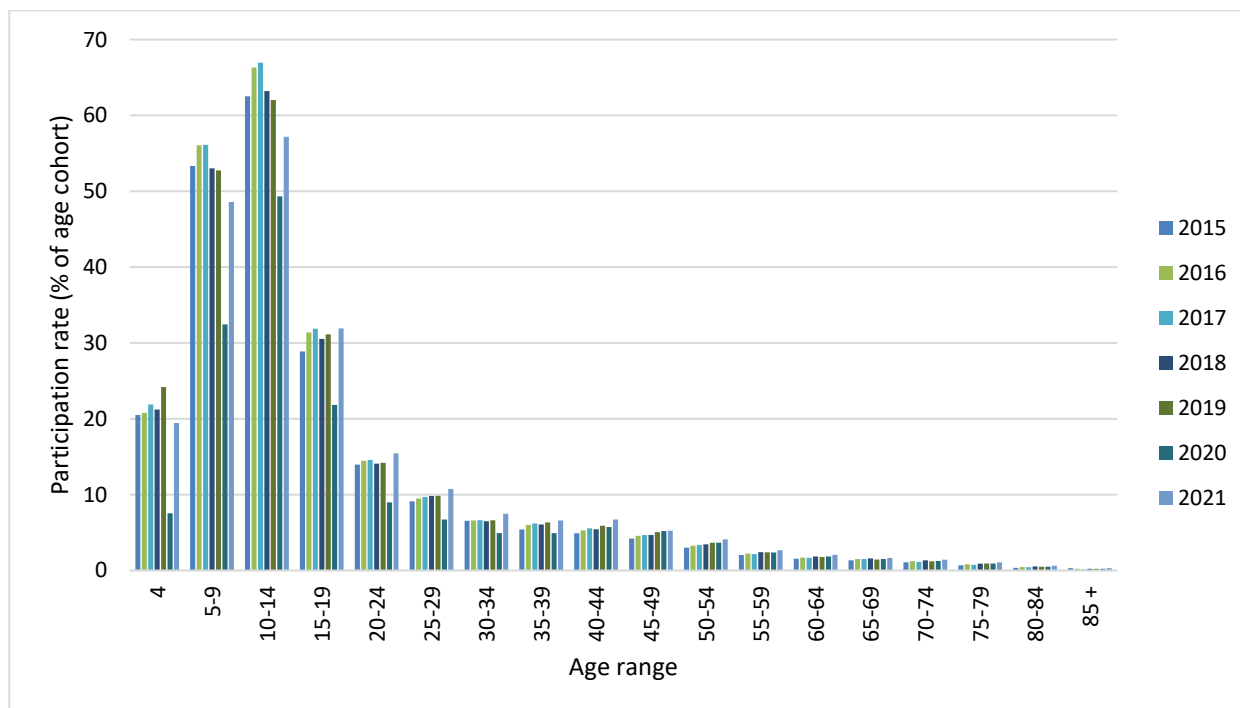


Figure 1. Overall participation rates: 2015 - 2021, Victoria: by age

Table 1. Age-specific participation numbers: 2015 - 2021, Victoria

Year	Age range																	
	4	5-9	10-14	15-19	20-24	25-29	30-34	35-39	40-44	45-49	50-54	55-59	60-64	65-69	70-74	75-79	80-84	85+
2021	15,786	202,465	227,045	120,417	72,803	57,565	39,918	32,641	28,569	22,624	16,537	10,399	7,473	5,244	3,905	2,065	860	420
2020	6,129	135,216	195,846	82,382	42,359	36,034	26,336	24,400	24,398	22,464	14,769	9,303	6,649	4,747	3,451	1,777	696	308
2019	19,766	216,984	239,436	119,095	69,325	52,279	34,485	30,342	24,628	21,809	14,429	9,267	6,174	4,435	3,181	1,692	642	298
2018	17,424	214,352	237,078	115,195	67,542	50,560	32,900	27,727	22,474	20,075	13,453	9,202	6,300	4,772	3,363	1,597	680	300
2017	18,015	221,933	243,385	119,268	67,965	48,570	32,596	27,098	22,981	19,750	12,970	8,132	5,597	4,440	2,704	1,285	522	191
2016	16,872	217,003	232,989	116,746	65,214	46,101	31,369	25,163	22,051	18,788	12,627	8,179	5,527	4,442	2,738	1,339	550	278
2015	15,669	195,497	212,744	104,081	59,380	41,624	29,674	21,749	20,396	16,619	11,534	7,215	4,872	3,807	2,287	1,097	421	371



Table 2. Participation counts and rates<sup>1,2</sup>, 2019 – 2021, Victoria: by sex and age

Region	Sex		Age range																Total		
			4	5-9	10-14	15-19	20-24	25-29	30-34	35-39	40-44	45-49	50-54	55-59	60-64	65-69	70-74	75-79		80-84	85+
Victoria	Persons	n 2021	15,786	20,465	22,045	120,417	72,803	57,565	39,918	32,641	28,569	22,624	16,537	10,399	7,473	5,244	3,905	2,065	860	420	866,736
		n 2020	6,129	135,216	195,846	82,382	42,359	36,034	26,336	24,400	24,398	22,464	14,769	9,303	6,649	4,747	3,451	1,777	696	308	637,263
		n 2019	19,766	216,984	239,436	119,095	69,325	52,279	34,485	30,342	24,628	21,809	14,429	9,267	6,174	4,435	3,181	1,692	642	298	868,266
		Rate 2021 (%)	19.5	48.6	57.2	31.9	15.4	10.8	7.5	6.6	6.7	5.2	4.1	2.7	2.1	1.7	1.4	1.1	0.6	0.3	12.9
		Rate 2020 (%)	7.6	32.5	49.3	21.8	9.0	6.7	4.9	4.9	5.7	5.2	3.7	2.4	1.8	1.5	1.3	0.9	0.5	0.2	9.5
		Rate 2019 (%)	24.2	52.7	62.0	31.1	14.2	9.8	6.6	6.4	5.9	5.1	3.7	2.4	1.8	1.5	1.2	0.9	0.5	0.2	13.2
	Males	n 2021	9,475	125,293	138,971	80,340	52,867	42,662	29,961	23,311	19,026	14,919	11,201	7,123	5,048	3,501	2,607	1,481	618	306	568,709
		n 2020	2,912	82,480	119,360	54,060	31,001	26,705	19,598	17,022	16,007	14,828	10,019	6,312	4,466	3,086	2,323	1,254	488	223	412,143
		n 2019	11,756	131,335	142,661	77,531	49,124	37,499	24,513	20,340	15,235	13,559	9,059	5,659	3,769	2,593	1,892	1,057	391	178	548,151
		Rate 2021 (%)	22.6	58.5	68.2	41.4	21.6	15.7	11.4	9.5	9.0	7.1	5.7	3.8	2.9	2.3	2.0	1.6	1.0	0.6	17.2
		Rate 2020 (%)	7.0	38.5	58.5	27.9	12.7	9.8	7.5	6.9	7.5	7.0	5.1	3.3	2.6	2.0	1.8	1.4	0.8	0.4	12.4
		Rate 2019 (%)	27.9	62.1	71.9	39.5	19.4	14.0	9.5	8.6	7.3	6.5	4.7	3.0	2.2	1.8	1.5	1.2	0.7	0.3	16.8
	Females	n 2021	6,311	77,172	88,075	40,077	19,936	14,903	9,956	9,330	9,543	7,705	5,336	3,275	2,426	1,743	1,298	584	242	114	298,027
		n 2020	3,217	52,735	76,486	28,322	11,358	9,329	6,738	7,378	8,391	7,636	4,750	2,991	2,184	1,661	1,128	523	208	85	225,120
		n 2019	8,010	85,648	96,775	41,564	20,201	14,780	9,972	10,001	9,393	8,251	5,370	3,608	2,406	1,842	1,290	635	251	120	320,116
		Rate 2021 (%)	16.1	38.1	45.6	21.9	8.8	5.7	3.7	3.7	4.5	3.5	2.6	1.6	1.3	1.1	0.9	0.6	0.3	0.1	8.8
		Rate 2020 (%)	8.2	26.0	39.6	15.4	5.0	3.5	2.5	3.0	3.9	3.5	2.3	1.5	1.2	1.0	0.8	0.5	0.3	0.1	6.7
		Rate 2019 (%)	20.2	42.8	51.6	22.3	8.6	5.6	3.8	4.2	4.5	3.7	2.7	1.8	1.3	1.2	1.0	0.7	0.3	0.1	9.6

<sup>1</sup> Number of player registrations per 100 residents

<sup>2</sup> Rate percentages are displayed to 1 decimal place accuracy, with values greater than zero but less than 0.05 being displayed as <0.05. As requested, changes in rates are displayed to 2 decimal place accuracy, but non-zero positive and negative differences less than 0.05 in magnitude are shown as +<0.05 and -<0.05 respectively.

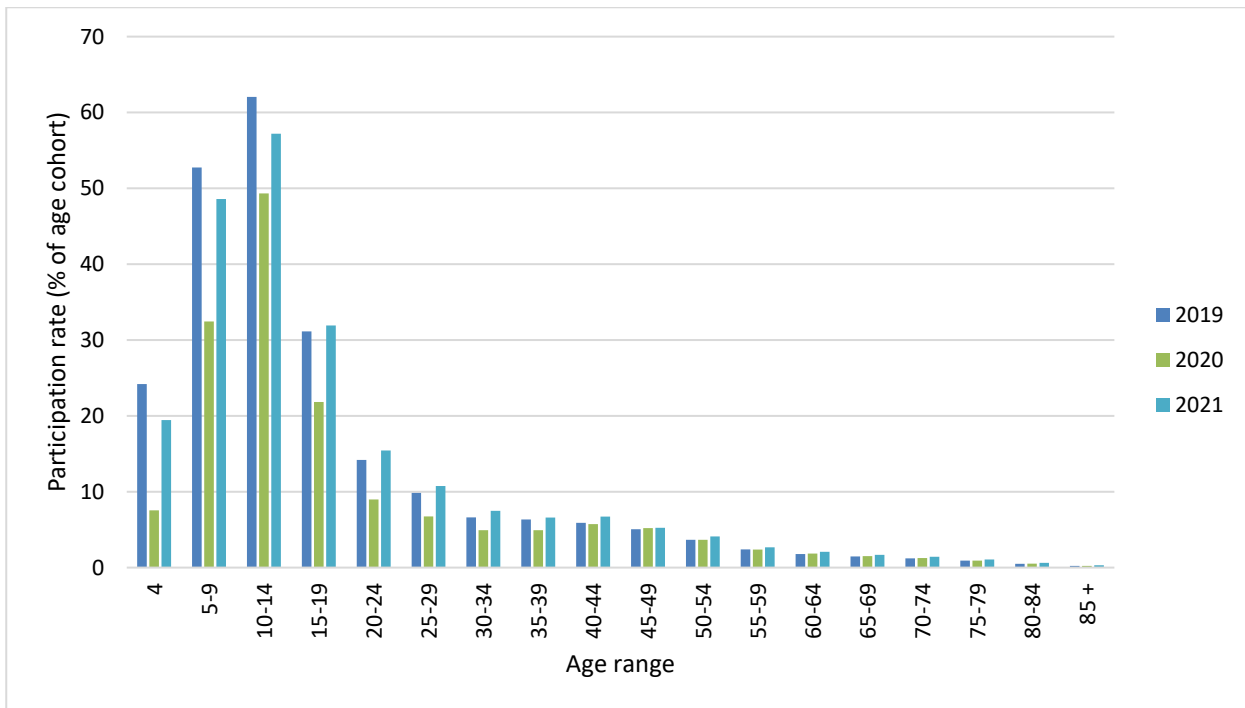


Figure 2. Age-specific participation rates: 2019 - 2021, Victoria

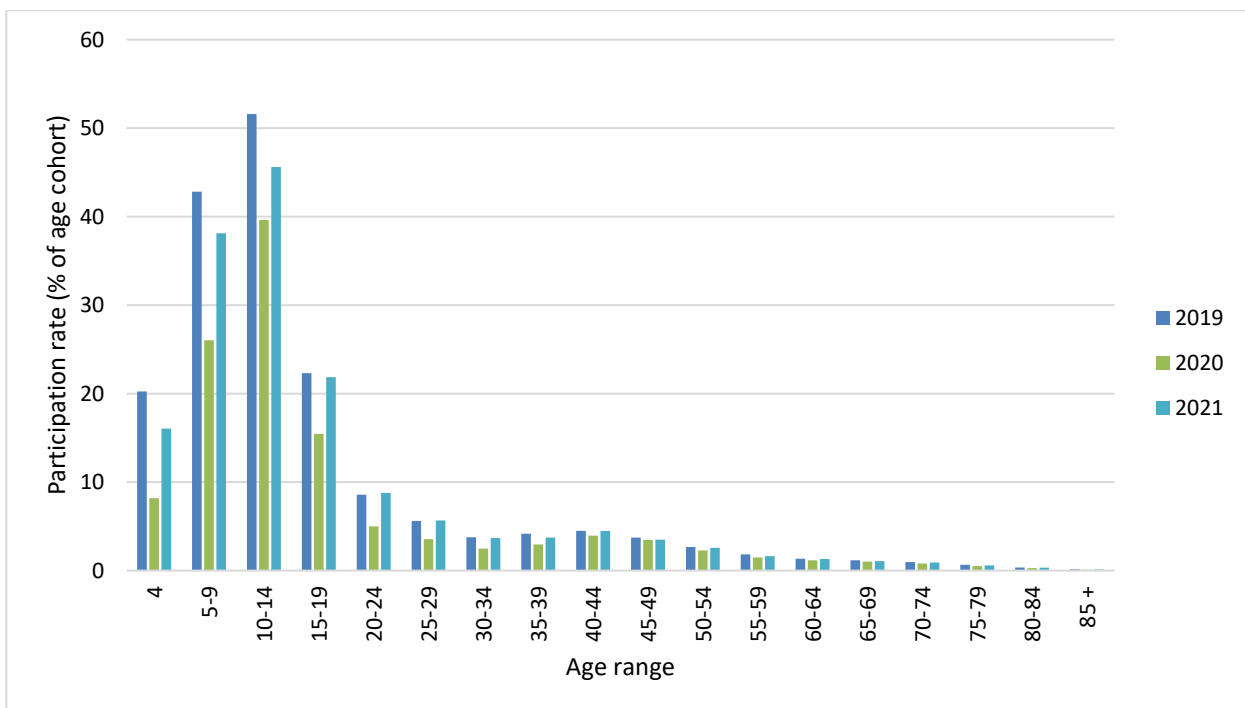


Figure 3. Age-specific participation rates: 2019 - 2021, Females, Victoria

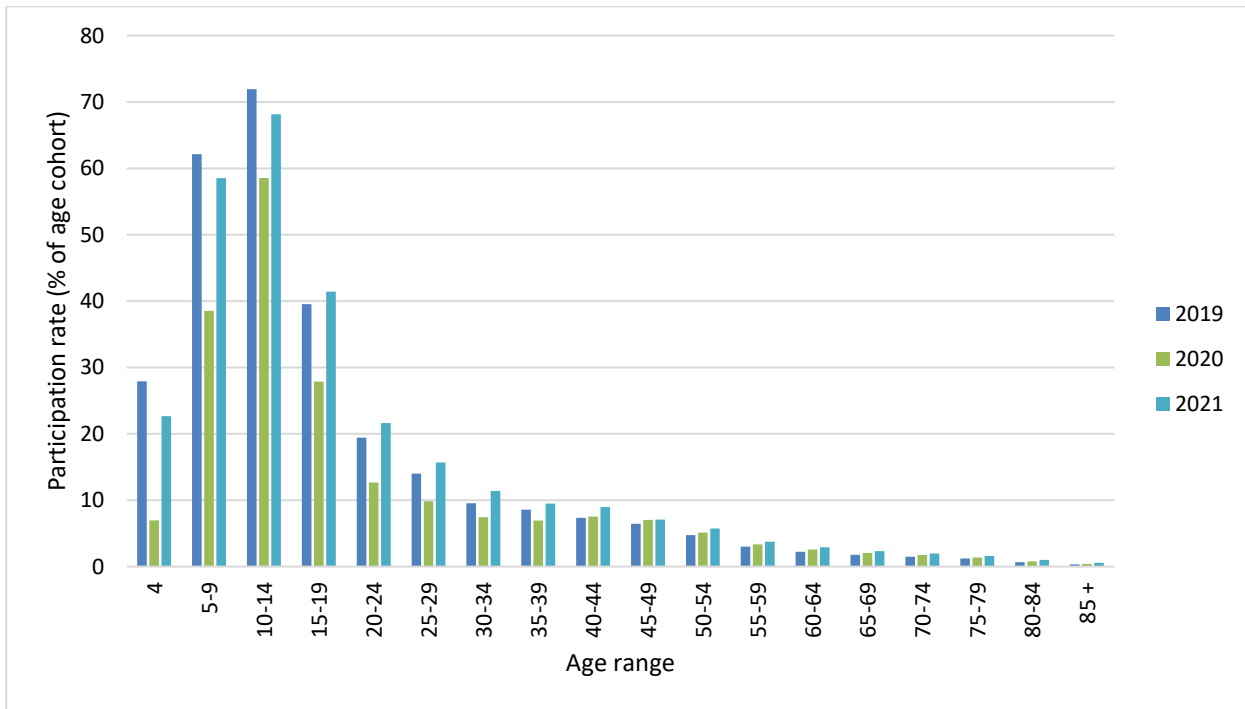


Figure 4. Age-specific participation rates: 2019 - 2021, Males, Victoria



Table 3. Participation counts and rates<sup>1,2</sup>, 2020 & 2021, Victoria: by region, sex and age

Region	Sex		Age range																	Total	
			4	5-9	10-14	15-19	20-24	25-29	30-34	35-39	40-44	45-49	50-54	55-59	60-64	65-69	70-74	75-79	80-84		85+
Victoria	Persons	n 2021	15,786	202,465	227,045	120,417	72,803	57,565	39,918	32,641	28,569	22,624	16,537	10,399	7,473	5,244	3,905	2,065	860	420	866,736
		n 2020	6,129	135,216	195,846	82,382	42,359	36,034	26,336	24,400	24,398	22,464	14,769	9,303	6,649	4,747	3,451	1,777	696	308	637,263
		Rate 2021 (%)	19.5	48.6	57.2	31.9	15.4	10.8	7.5	6.6	6.7	5.2	4.1	2.7	2.1	1.7	1.4	1.1	0.6	0.3	12.9
		Rate 2020 (%)	7.6	32.5	49.3	21.8	9.0	6.7	4.9	4.9	5.7	5.2	3.7	2.4	1.8	1.5	1.3	0.9	0.5	0.2	9.5
		Change 2020-2021	11.90	16.14	7.86	10.08	6.46	4.02	2.55	1.66	0.98	+ <0.05	0.44	0.28	0.23	0.16	0.17	0.15	0.12	0.08	3.43
	Males	n 2021	9,475	125,293	138,971	80,340	52,867	42,662	29,961	23,311	19,026	14,919	11,201	7,123	5,048	3,501	2,607	1,481	618	306	568,709
		n 2020	2,912	82,480	119,360	54,060	31,001	26,705	19,598	17,022	16,007	14,828	10,019	6,312	4,466	3,086	2,323	1,254	488	223	412,143
		Rate 2021 (%)	22.6	58.5	68.2	41.4	21.6	15.7	11.4	9.5	9.0	7.1	5.7	3.8	2.9	2.3	2.0	1.6	1.0	0.6	17.2
		Rate 2020 (%)	7.0	38.5	58.5	27.9	12.7	9.8	7.5	6.9	7.5	7.0	5.1	3.3	2.6	2.0	1.8	1.4	0.8	0.4	12.4
		Change 2020-2021	15.69	20.00	9.62	13.55	8.94	5.87	3.94	2.56	1.42	+ <0.05	0.60	0.43	0.33	0.28	0.21	0.25	0.21	0.15	4.72
	Females	n 2021	6,311	77,172	88,075	40,077	19,936	14,903	9,956	9,330	9,543	7,705	5,336	3,275	2,426	1,743	1,298	584	242	114	298,027
		n 2020	3,217	52,735	76,486	28,322	11,358	9,329	6,738	7,378	8,391	7,636	4,750	2,991	2,184	1,661	1,128	523	208	85	225,120
		Rate 2021 (%)	16.1	38.1	45.6	21.9	8.8	5.7	3.7	3.7	4.5	3.5	2.6	1.6	1.3	1.1	0.9	0.6	0.3	0.1	8.8
		Rate 2020 (%)	8.2	26.0	39.6	15.4	5.0	3.5	2.5	3.0	3.9	3.5	2.3	1.5	1.2	1.0	0.8	0.5	0.3	0.1	6.7
		Change 2020-2021	7.87	12.07	6.00	6.41	3.78	2.12	1.19	0.78	0.54	+ <0.05	0.28	0.14	0.13	0.05	0.12	0.06	+ <0.05	+ <0.05	2.16
Metropolitan Growth	Persons	n 2021	2,753	33,478	36,011	19,242	12,098	9,141	6,810	6,323	4,618	2,772	1,610	864	453	293	203	78	25	20	136,792
		n 2020	1,216	23,945	31,998	13,402	7,531	5,780	4,547	4,910	3,926	2,794	1,457	764	406	263	171	78	21	11	103,218
		Rate 2021 (%)	11.6	28.2	35.2	21.9	12.6	8.1	5.3	4.9	4.5	3.0	2.0	1.2	0.7	0.6	0.5	0.3	0.1	0.1	9.4
		Rate 2020 (%)	5.1	20.1	31.3	15.3	7.9	5.2	3.5	3.8	3.8	3.0	1.8	1.0	0.6	0.5	0.4	0.3	0.1	0.1	7.1
		Change 2020-2021	6.49	8.02	3.92	6.65	4.77	3.00	1.75	1.09	0.67	- <0.05	0.19	0.13	0.07	0.06	0.08	+ <0.05	+ <0.05	0.06	2.30
	Males	n 2021	1,560	21,369	23,754	13,642	9,182	7,101	5,390	4,905	3,413	2,016	1,190	626	311	198	143	56	21	15	94,891
		n 2020	573	14,795	20,407	9,370	5,656	4,447	3,506	3,572	2,733	1,945	1,051	533	286	171	115	46	14	8	69,227
		Rate 2021 (%)	12.7	34.9	45.2	30.1	18.3	12.6	8.6	7.5	6.4	4.3	2.9	1.7	1.0	0.8	0.7	0.4	0.3	0.3	13.0
		Rate 2020 (%)	4.7	24.1	38.8	20.7	11.3	7.9	5.6	5.5	5.1	4.2	2.6	1.5	0.9	0.7	0.6	0.4	0.2	0.1	9.4
		Change 2020-2021	8.05	10.73	6.37	9.43	7.04	4.72	3.02	2.05	1.28	0.15	0.34	0.26	0.08	0.11	0.14	0.08	0.08	0.11	3.50
	Females	n 2021	1,193	12,109	12,257	5,599	2,916	2,040	1,420	1,418	1,204	757	420	238	142	96	61	21	4	4	41,901
		n 2020	642	9,150	11,592	4,032	1,875	1,333	1,041	1,338	1,193	849	406	231	121	92	57	32	7	3	33,992
		Rate 2021 (%)	10.4	21.0	24.6	13.2	6.4	3.6	2.1	2.2	2.4	1.6	1.0	0.6	0.4	0.4	0.3	0.2	<0.1	<0.1	5.7
		Rate 2020 (%)	5.6	15.9	23.3	9.5	4.1	2.4	1.6	2.1	2.4	1.8	1.0	0.6	0.4	0.3	0.3	0.2	0.1	<0.1	4.7
		Change 2020-2021	4.82	5.14	1.34	3.68	2.28	1.26	0.57	0.12	+ <0.05	-0.20	+ <0.05	+ <0.05	0.07	+ <0.05	+ <0.05	-0.07	- <0.05	+ <0.05	1.08



Region	Sex		Age range																	Total	
			4	5-9	10-14	15-19	20-24	25-29	30-34	35-39	40-44	45-49	50-54	55-59	60-64	65-69	70-74	75-79	80-84		85+
Metropolitan Other	Persons	n 2021	8,343	107,006	122,404	63,313	38,504	31,148	21,328	16,843	16,170	14,065	10,976	7,208	5,158	3,559	2,781	1,508	665	310	471,289
		n 2020	3,445	77,288	110,147	44,956	23,850	21,483	15,392	13,273	14,083	14,209	9,863	6,458	4,539	3,240	2,465	1,268	537	230	366,725
		Rate 2021 (%)	21.8	53.6	62.9	32.1	13.5	9.4	6.8	6.1	6.9	5.9	4.9	3.4	2.7	2.2	1.9	1.4	0.8	0.4	12.9
		Rate 2020 (%)	9.0	38.7	56.6	22.8	8.3	6.5	4.9	4.8	6.0	6.0	4.4	3.1	2.4	2.0	1.7	1.2	0.7	0.3	10.0
		Change 2020-2021	12.80	14.87	6.30	9.32	5.13	2.92	1.90	1.30	0.89	-0.06	0.50	0.36	0.32	0.20	0.22	0.23	0.16	0.09	2.85
	Males	n 2021	4,857	65,228	73,871	41,584	28,072	23,125	16,121	12,319	10,916	9,330	7,415	4,985	3,519	2,396	1,849	1,083	479	222	307,371
		n 2020	1,565	46,540	65,604	28,311	17,122	15,571	11,400	9,394	9,314	9,429	6,674	4,460	3,062	2,128	1,672	907	376	162	233,691
		Rate 2021 (%)	24.7	63.7	74.1	41.2	19.1	13.7	10.3	9.0	9.4	8.1	6.9	4.9	3.8	3.1	2.7	2.2	1.4	0.7	17.0
		Rate 2020 (%)	7.9	45.5	65.8	28.0	11.6	9.2	7.3	6.9	8.0	8.1	6.2	4.4	3.3	2.8	2.4	1.8	1.1	0.5	12.9
		Change 2020-2021	16.71	18.25	8.29	13.15	7.44	4.49	3.03	2.14	1.38	-0.09	0.69	0.52	0.50	0.35	0.26	0.36	0.30	0.18	4.08
	Females	n 2021	3,486	41,777	48,533	21,730	10,432	8,024	5,208	4,525	5,254	4,734	3,561	2,222	1,640	1,162	932	425	186	89	163,918
		n 2020	1,879	30,748	44,544	16,645	6,728	5,912	3,992	3,879	4,769	4,781	3,189	1,998	1,477	1,112	793	361	160	68	133,034
		Rate 2021 (%)	18.8	42.9	51.2	22.6	7.5	4.9	3.3	3.3	4.4	3.9	3.1	2.1	1.7	1.3	1.2	0.7	0.4	0.2	8.8
		Rate 2020 (%)	10.1	31.6	47.0	17.3	4.9	3.6	2.5	2.8	4.0	3.9	2.8	1.9	1.5	1.3	1.0	0.6	0.4	0.1	7.2
		Change 2020-2021	8.66	11.32	4.21	5.30	2.67	1.30	0.77	0.47	0.41	-<0.05	0.32	0.21	0.16	0.06	0.18	0.11	0.06	+ <0.05	1.66
Regional Growth	Persons	n 2021	2,143	27,246	27,342	14,265	8,925	6,903	4,455	3,621	3,010	2,288	1,592	1,054	896	670	454	256	103	51	105,271
		n 2020	693	16,764	23,298	10,021	4,881	3,941	2,762	2,832	2,935	2,467	1,531	944	841	616	414	237	87	36	75,299
		Rate 2021 (%)	25.6	64.3	65.2	36.9	21.1	15.5	10.4	8.7	7.8	5.5	4.1	2.5	2.2	1.8	1.4	1.1	0.7	0.3	16.0
		Rate 2020 (%)	8.3	39.6	55.6	26.0	11.5	8.9	6.4	6.8	7.6	5.9	3.9	2.3	2.1	1.7	1.3	1.0	0.6	0.2	11.4
		Change 2020-2021	17.32	24.74	9.65	10.99	9.56	6.66	3.95	1.90	0.20	-0.43	0.15	0.26	0.14	0.14	0.12	0.08	0.11	0.10	4.55
	Males	n 2021	1,378	17,422	16,775	9,605	6,216	4,937	3,174	2,365	1,851	1,423	1,043	700	592	432	300	188	76	44	68,519
		n 2020	327	10,551	14,642	6,942	3,588	2,987	2,019	1,839	1,782	1,574	1,020	620	561	387	277	171	67	30	49,381
		Rate 2021 (%)	31.4	79.6	77.9	48.2	28.8	22.0	15.2	11.7	9.9	7.0	5.6	3.5	3.1	2.4	1.9	1.7	1.1	0.8	21.2
		Rate 2020 (%)	7.5	48.2	68.0	34.8	16.6	13.3	9.7	9.1	9.5	7.8	5.4	3.1	2.9	2.2	1.7	1.6	1.0	0.5	15.3
		Change 2020-2021	23.97	31.40	9.90	13.36	12.18	8.68	5.52	2.61	0.37	-0.75	0.13	0.40	0.17	0.25	0.15	0.15	0.14	0.24	5.93
	Females	n 2021	764	9,824	10,567	4,659	2,709	1,966	1,281	1,257	1,160	865	548	354	304	238	154	68	27	7	36,752
		n 2020	366	6,213	8,656	3,079	1,293	954	744	993	1,153	892	512	325	281	230	137	66	20	6	25,919
		Rate 2021 (%)	19.2	48.0	51.9	24.9	13.1	8.9	5.8	5.9	5.8	4.0	2.7	1.6	1.4	1.2	0.9	0.6	0.3	0.1	10.9
		Rate 2020 (%)	9.2	30.3	42.5	16.5	6.2	4.3	3.4	4.6	5.8	4.1	2.5	1.5	1.3	1.2	0.8	0.6	0.2	0.1	7.7
		Change 2020-2021	10.00	17.63	9.38	8.46	6.83	4.59	2.45	1.23	+ <0.05	-0.13	0.18	0.14	0.11	+ <0.05	0.10	+ <0.05	0.08	+ <0.05	3.22





Region	Sex		Age range																	Total		
			4	5-9	10-14	15-19	20-24	25-29	30-34	35-39	40-44	45-49	50-54	55-59	60-64	65-69	70-74	75-79	80-84		85+	
Regional Other	Persons	n 2021	2,546	34,736	41,289	23,598	13,276	10,373	7,325	5,854	4,772	3,499	2,360	1,273	966	723	467	223	66	40	153,384	
		n 2020	775	17,218	30,403	14,004	6,097	4,830	3,635	3,385	3,454	2,995	1,918	1,137	863	628	401	194	52	31	92,020	
	Rate 2021 (%)	23.6	62.5	70.9	43.8	27.8	21.9	15.1	11.9	9.7	6.1	4.0	2.0	1.5	1.2	0.9	0.6	0.3	0.2	0.2	16.8	
	Rate 2020 (%)	7.2	31.0	52.2	26.0	12.8	10.2	7.5	6.9	7.0	5.2	3.2	1.8	1.3	1.0	0.7	0.5	0.2	0.1	0.1	10.1	
	Change 2020-2021	16.38	31.53	18.69	17.81	15.04	11.72	7.63	5.01	2.69	0.88	0.74	0.21	0.16	0.15	0.12	0.08	0.06	+ <0.05		6.73	
	Males	n 2021	1,680	21,274	24,571	15,509	9,397	7,499	5,277	3,723	2,846	2,150	1,552	812	626	475	316	154	42	25	97,928	
		n 2020	446	10,594	18,708	9,437	4,635	3,699	2,674	2,218	2,178	1,880	1,275	700	558	400	260	130	30	23	59,845	
		Rate 2021 (%)	30.6	74.5	81.6	55.9	36.6	30.3	22.3	15.8	11.7	7.6	5.3	2.6	1.9	1.5	1.1	0.8	0.4	0.3	0.3	21.5
		Rate 2020 (%)	8.1	37.1	62.1	34.0	18.0	14.9	11.3	9.4	9.0	6.6	4.4	2.2	1.7	1.3	0.9	0.7	0.3	0.2	0.2	13.1
		Change 2020-2021	22.48	37.38	19.48	21.90	18.53	15.34	10.98	6.37	2.76	0.95	0.95	0.35	0.21	0.24	0.20	0.13	0.10	+ <0.05		8.37
	Females	n 2021	867	13,462	16,718	8,089	3,880	2,874	2,048	2,131	1,926	1,350	807	461	340	247	151	69	24	14	55,456	
		n 2020	329	6,624	11,695	4,567	1,462	1,131	961	1,168	1,277	1,114	643	438	305	228	141	64	21	8	32,175	
		Rate 2021 (%)	16.3	49.9	59.4	30.9	17.6	12.8	8.3	8.3	7.8	4.6	2.7	1.4	1.0	0.8	0.6	0.4	0.2	0.1	0.1	12.2
		Rate 2020 (%)	6.2	24.5	41.6	17.5	6.6	5.0	3.9	4.6	5.1	3.8	2.1	1.3	0.9	0.7	0.5	0.3	0.2	0.1	0.1	7.1
Change 2020-2021		10.11	25.33	17.85	13.47	10.96	7.74	4.41	3.75	2.62	0.80	0.54	0.07	0.11	0.06	+ <0.05	+ <0.05	+ <0.05	+ <0.05		5.11	

<sup>1</sup> Aggregated over 10 sports.

<sup>2</sup> Number of player registrations per 100 residents, expressed as a percentage.

<sup>3</sup> Rate percentages are displayed to 1 decimal place accuracy, with values greater than zero but less than 0.05 being displayed as <0.05. As requested, changes in rates are displayed to 2 decimal place accuracy, but non-zero positive and negative differences less than 0.05 in magnitude are shown as +<0.05 and -<0.05 respectively.



Table 4. Participation counts and rates<sup>1,2</sup>, 2021, Victoria: by region, sex and age

Region	Sex		Age range																	Total	
			4	5-9	10-14	15-19	20-24	25-29	30-34	35-39	40-44	45-49	50-54	55-59	60-64	65-69	70-74	75-79	80-84		85+
Victoria	Persons	n	15,786	202,465	227,045	120,417	72,803	57,565	39,918	32,641	28,569	22,624	16,537	10,399	7,473	5,244	3,905	2,065	860	420	866,736
		ERP <sup>3</sup>	81,145	416,633	397,014	377,296	471,494	535,043	533,573	495,343	425,262	431,192	402,699	390,200	360,700	313,922	274,433	193,040	136,555	139,409	6,695,776
		Rate (%)	19.5	48.6	57.2	31.9	15.4	10.8	7.5	6.6	6.7	5.2	4.1	2.7	2.1	1.7	1.4	1.1	0.6	0.3	12.9
	Males	n	9,475	125,293	138,971	80,340	52,867	42,662	29,961	23,311	19,026	14,919	11,201	7,123	5,048	3,501	2,607	1,481	618	306	568,709
		ERP <sup>3</sup>	41,834	214,114	203,905	193,900	244,559	271,807	262,942	245,525	212,237	210,834	195,327	189,228	174,176	150,659	132,506	91,600	61,353	54,022	3,315,488
		Rate (%)	22.6	58.5	68.2	41.4	21.6	15.7	11.4	9.5	9.0	7.1	5.7	3.8	2.9	2.3	2.0	1.6	1.0	0.6	17.2
	Females	n	6,311	77,172	88,075	40,077	19,936	14,903	9,956	9,330	9,543	7,705	5,336	3,275	2,426	1,743	1,298	584	242	114	298,027
		ERP <sup>3</sup>	39,306	202,519	193,109	183,396	226,935	263,236	270,631	249,818	213,025	220,358	207,372	200,972	186,524	163,263	141,927	101,440	75,202	85,387	3,380,288
		Rate (%)	16.1	38.1	45.6	21.9	8.8	5.7	3.7	3.7	4.5	3.5	2.6	1.6	1.3	1.1	0.9	0.6	0.3	0.1	8.8
Metropolitan Growth	Persons	n	2,753	33,478	36,011	19,242	12,098	9,141	6,810	6,323	4,618	2,772	1,610	864	453	293	203	78	25	20	136,792
		ERP <sup>3</sup>	23,697	118,887	102,318	87,874	95,692	112,166	129,253	129,616	103,102	93,090	81,704	74,507	63,719	51,709	41,499	26,614	17,356	14,859	1,461,961
		Rate (%)	11.6	28.2	35.2	21.9	12.6	8.1	5.3	4.9	4.5	3.0	2.0	1.2	0.7	0.6	0.5	0.3	0.1	0.1	9.4
	Males	N	1,560	21,369	23,754	13,642	9,182	7,101	5,390	4,905	3,413	2,016	1,190	626	311	198	143	56	21	15	94,891
		ERP <sup>3</sup>	12,261	61,274	52,558	45,297	50,047	56,188	62,407	65,045	53,219	46,453	40,432	36,333	30,869	24,913	19,971	12,723	8,034	5,982	732,652
		Rate (%)	12.7	34.9	45.2	30.1	18.3	12.6	8.6	7.5	6.4	4.3	2.9	1.7	1.0	0.8	0.7	0.4	0.3	0.3	13.0
	Females	N	1,193	12,109	12,257	5,599	2,916	2,040	1,420	1,418	1,204	757	420	238	142	96	61	21	4	4	41,901
		ERP <sup>3</sup>	11,437	57,613	49,760	42,577	45,645	55,978	66,846	64,571	49,883	46,637	41,272	38,174	32,850	26,796	21,528	13,891	9,322	8,877	729,309
		Rate (%)	10.4	21.0	24.6	13.2	6.4	3.6	2.1	2.2	2.4	1.6	1.0	0.6	0.4	0.4	0.3	0.2	<0.1	<0.1	5.7
Metropolitan Other	Persons	n	8,343	107,006	122,404	63,313	38,504	31,148	21,328	16,843	16,170	14,065	10,976	7,208	5,158	3,559	2,781	1,508	665	310	471,289
		ERP <sup>3</sup>	38,269	199,818	194,530	196,945	285,764	331,079	313,115	274,923	234,368	238,781	222,206	209,277	190,751	162,996	145,493	106,262	78,926	84,860	3,663,231
		Rate (%)	21.8	53.6	62.9	32.1	13.5	9.4	6.8	6.1	6.9	5.9	4.9	3.4	2.7	2.2	1.9	1.4	0.8	0.4	12.9
	Males	N	4,857	65,228	73,871	41,584	28,072	23,125	16,121	12,319	10,916	9,330	7,415	4,985	3,519	2,396	1,849	1,083	479	222	307,371
		ERP <sup>3</sup>	19,701	102,386	99,704	100,954	147,239	168,377	155,918	136,704	116,013	115,887	106,925	101,357	91,558	76,782	68,854	49,418	34,769	32,667	1,804,881
		Rate (%)	24.7	63.7	74.1	41.2	19.1	13.7	10.3	9.0	9.4	8.1	6.9	4.9	3.8	3.1	2.7	2.2	1.4	0.7	17.0
	Females	N	3,486	41,777	48,533	21,730	10,432	8,024	5,208	4,525	5,254	4,734	3,561	2,222	1,640	1,162	932	425	186	89	163,918
		ERP <sup>3</sup>	18,564	97,432	94,826	95,991	138,525	162,702	157,197	138,219	118,355	122,894	115,281	107,920	99,193	86,214	76,639	56,844	44,157	52,193	1,858,350
		Rate (%)	18.8	42.9	51.2	22.6	7.5	4.9	3.3	3.3	4.4	3.9	3.1	2.1	1.7	1.3	1.2	0.7	0.4	0.2	8.8



Region	Sex		Age range																	Total	
			4	5-9	10-14	15-19	20-24	25-29	30-34	35-39	40-44	45-49	50-54	55-59	60-64	65-69	70-74	75-79	80-84		85+
Regional Growth	Persons	n	2,143	27,246	27,342	14,265	8,925	6,903	4,455	3,621	3,010	2,288	1,592	1,054	896	670	454	256	103	51	105,271
		ERP <sup>3</sup>	8,370	42,365	41,917	38,610	42,292	44,510	42,850	41,518	38,762	41,803	39,201	41,498	40,474	37,190	33,022	22,804	15,273	15,356	659,320
		Rate (%)	25.6	64.3	65.2	36.9	21.1	15.5	10.4	8.7	7.8	5.5	4.1	2.5	2.2	1.8	1.4	1.1	0.7	0.3	16.0
	Males	N	1,378	17,422	16,775	9,605	6,216	4,937	3,174	2,365	1,851	1,423	1,043	700	592	432	300	188	76	44	68,519
		ERP <sup>3</sup>	4,384	21,885	21,538	19,927	21,581	22,472	20,917	20,139	18,773	20,214	18,756	19,805	19,158	17,792	15,979	10,846	6,935	5,678	322,736
		Rate (%)	31.4	79.6	77.9	48.2	28.8	22.0	15.2	11.7	9.9	7.0	5.6	3.5	3.1	2.4	1.9	1.7	1.1	0.8	21.2
	Females	N	764	9,824	10,567	4,659	2,709	1,966	1,281	1,257	1,160	865	548	354	304	238	154	68	27	7	36,752
		ERP <sup>3</sup>	3,985	20,480	20,379	18,683	20,711	22,038	21,933	21,379	19,989	21,589	20,445	21,693	21,316	19,398	17,043	11,958	8,338	9,678	336,584
		Rate (%)	19.2	48.0	51.9	24.9	13.1	8.9	5.8	5.9	5.8	4.0	2.7	1.6	1.4	1.2	0.9	0.6	0.3	0.1	10.9
Regional Other	Persons	n	2,546	34,736	41,289	23,598	13,276	10,373	7,325	5,854	4,772	3,499	2,360	1,273	966	723	467	223	66	40	153,384
		ERP <sup>3</sup>	10,809	55,563	58,249	53,867	47,746	47,288	48,355	49,286	49,030	57,518	59,588	64,918	65,756	62,027	54,419	37,360	25,000	24,334	911,264
		Rate (%)	23.6	62.5	70.9	43.8	27.8	21.9	15.1	11.9	9.7	6.1	4.0	2.0	1.5	1.2	0.9	0.6	0.3	0.2	16.8
	Males	N	1,680	21,274	24,571	15,509	9,397	7,499	5,277	3,723	2,846	2,150	1,552	812	626	475	316	154	42	25	97,928
		ERP <sup>3</sup>	5,488	28,569	30,105	27,722	25,692	24,770	23,700	23,637	24,232	28,280	29,214	31,733	32,591	31,172	27,702	18,613	11,615	9,695	455,219
		Rate (%)	30.6	74.5	81.6	55.9	36.6	30.3	22.3	15.8	11.7	7.6	5.3	2.6	1.9	1.5	1.1	0.8	0.4	0.3	21.5
	Females	N	867	13,462	16,718	8,089	3,880	2,874	2,048	2,131	1,926	1,350	807	461	340	247	151	69	24	14	55,456
		ERP <sup>3</sup>	5,319	26,994	28,144	26,145	22,054	22,518	24,655	25,649	24,798	29,238	30,374	33,185	33,165	30,855	26,717	18,747	13,385	14,639	456,045
		Rate (%)	16.3	49.9	59.4	30.9	17.6	12.8	8.3	8.3	7.8	4.6	2.7	1.4	1.0	0.8	0.6	0.4	0.2	0.1	12.2

<sup>1</sup> Aggregated over 10 sports.

<sup>2</sup> Number of player registrations per 100 residents, expressed as a percentage.

<sup>3</sup> ERP = Estimated resident population

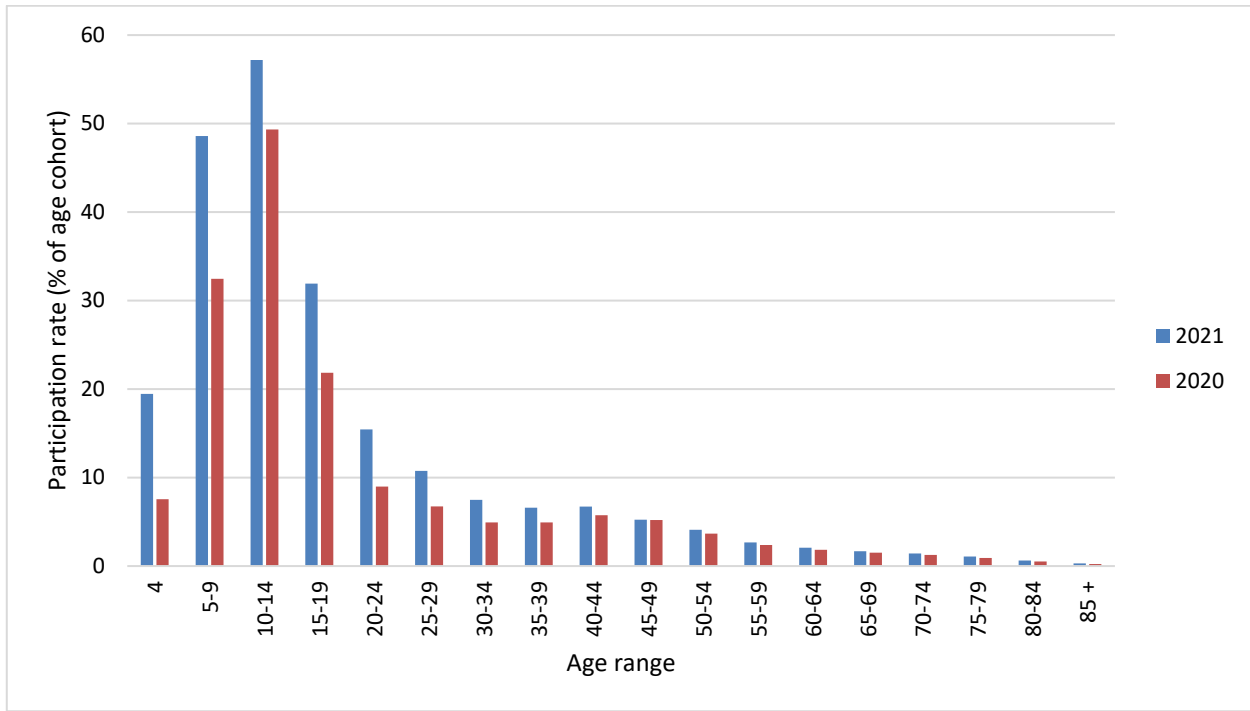


Figure 5. Participation rates, 2020, 2021, Victoria: by age

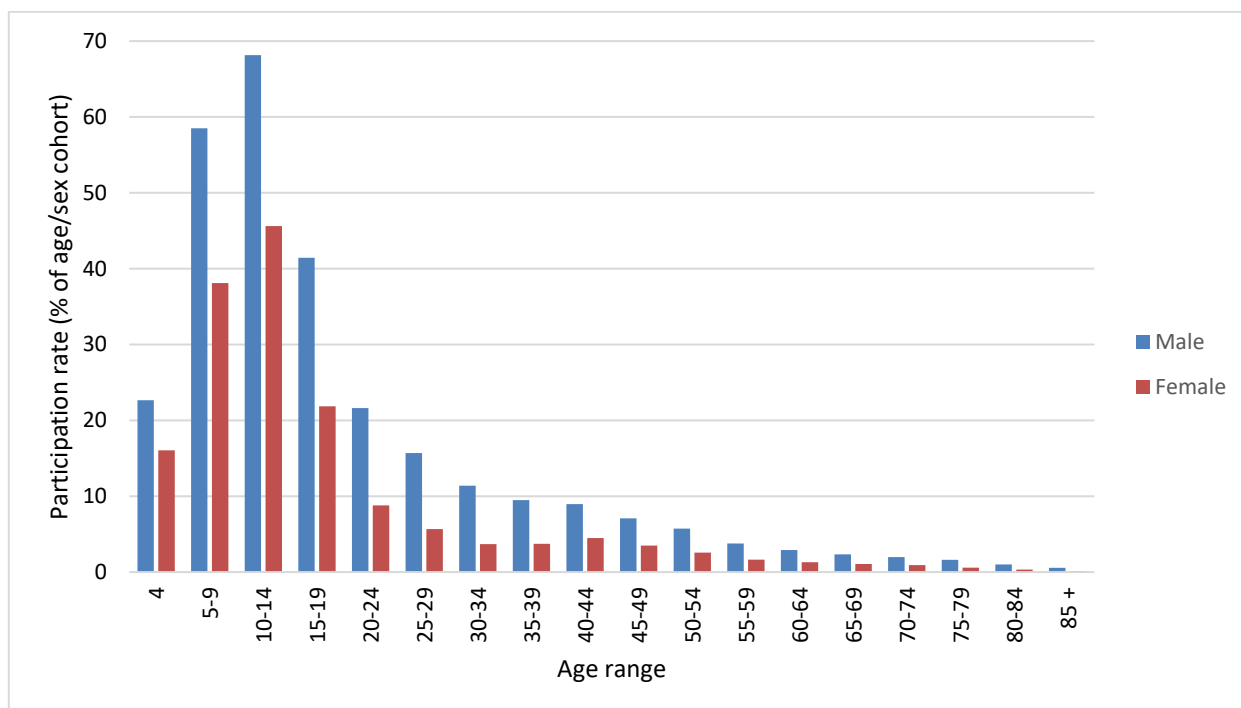


Figure 6. Participation rates, 2021, Victoria: by sex and age

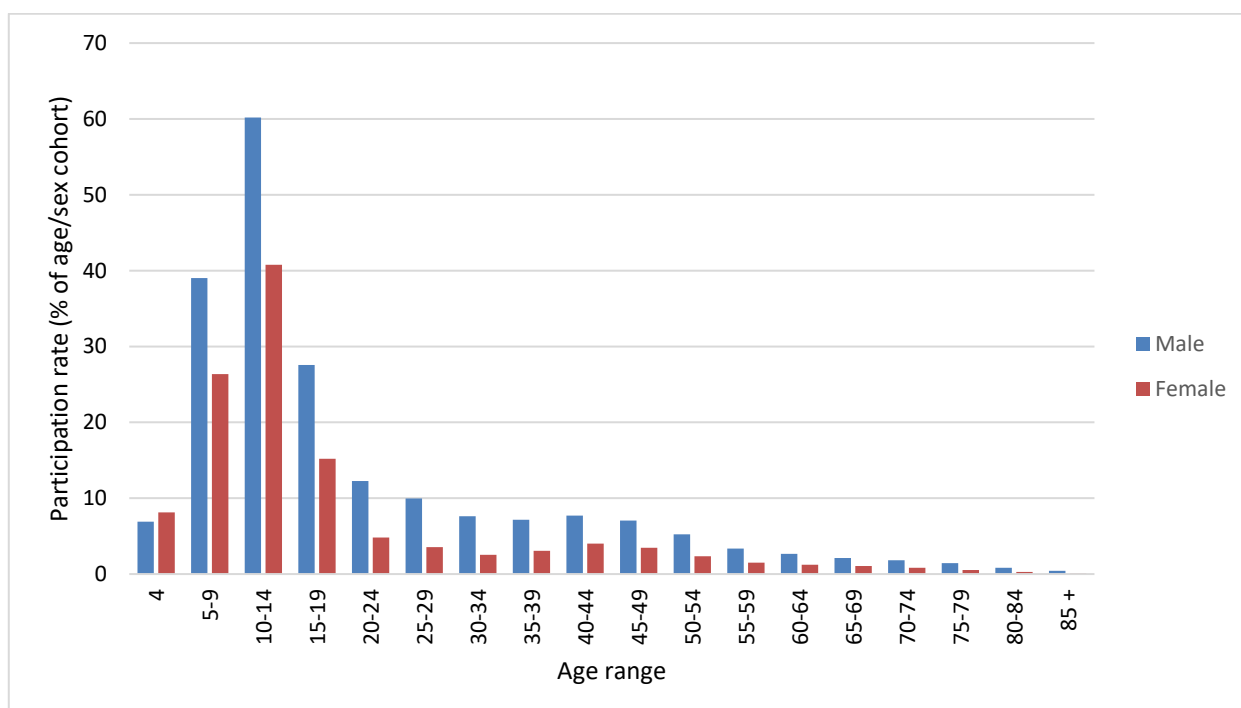


Figure 7. Participation rates, 2020, Victoria: by sex and age

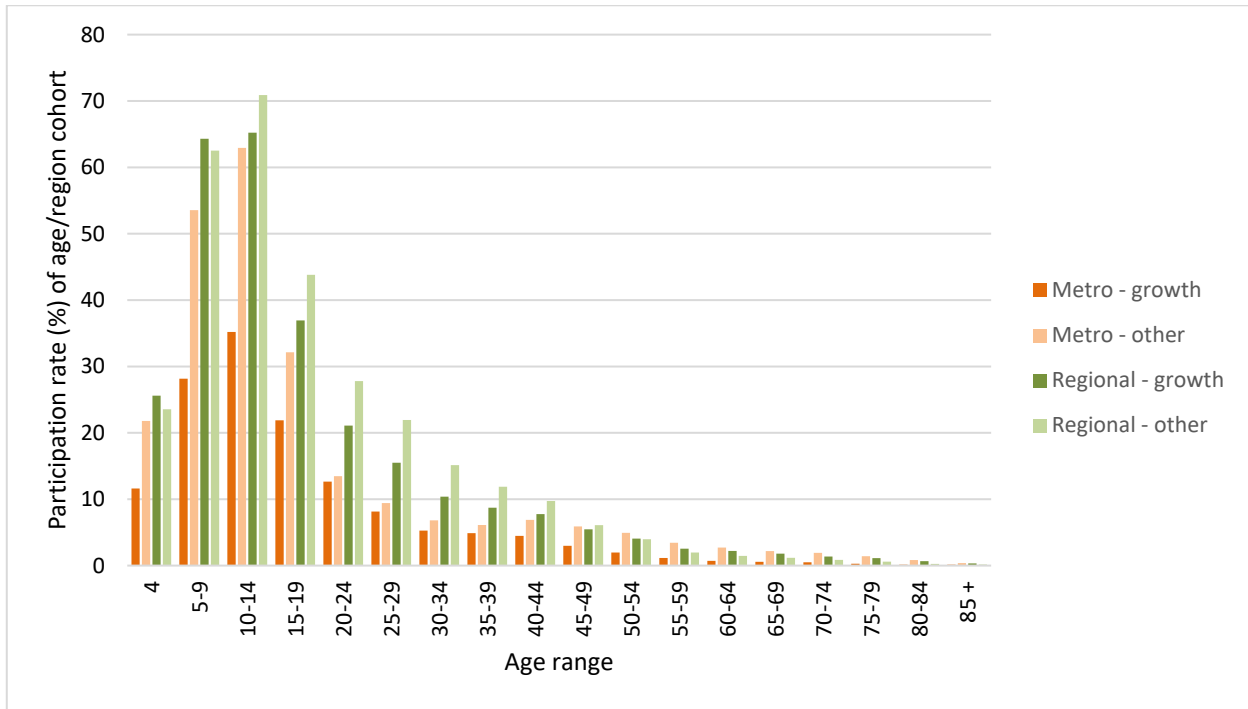


Figure 8. Participation rates, 2021, Victoria: by region and age

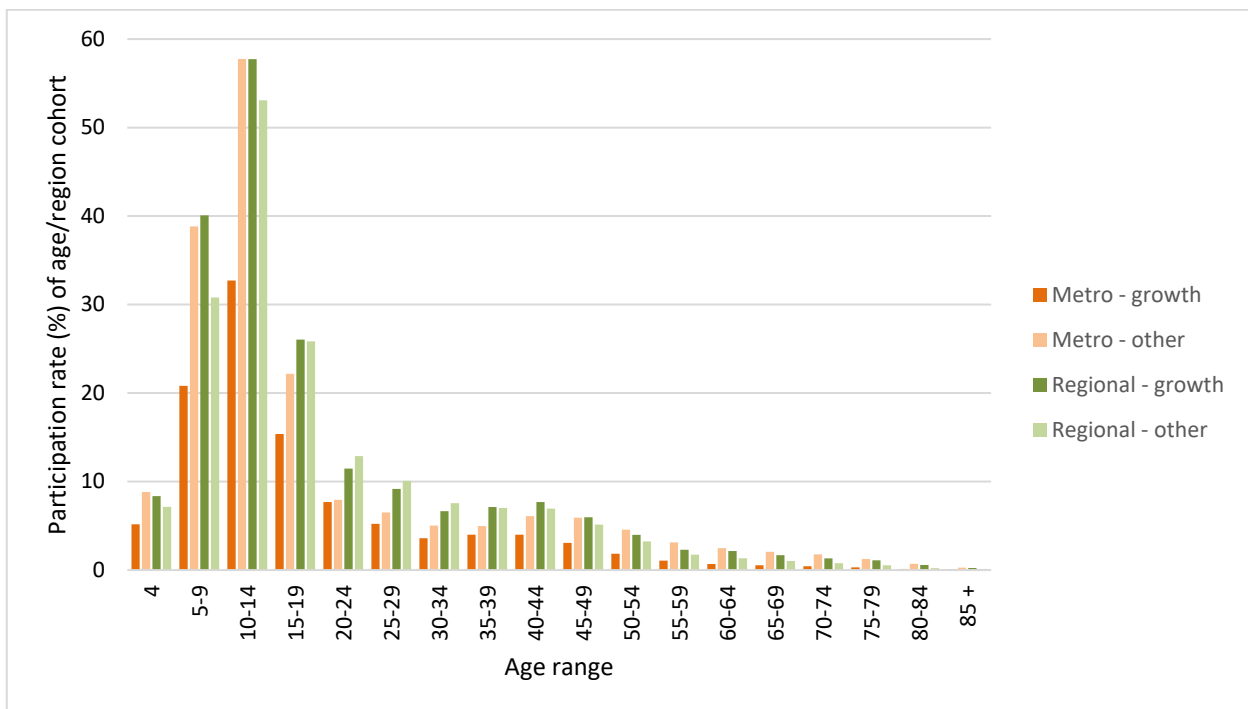


Figure 9. Participation rates, 2020, Victoria: by region and age

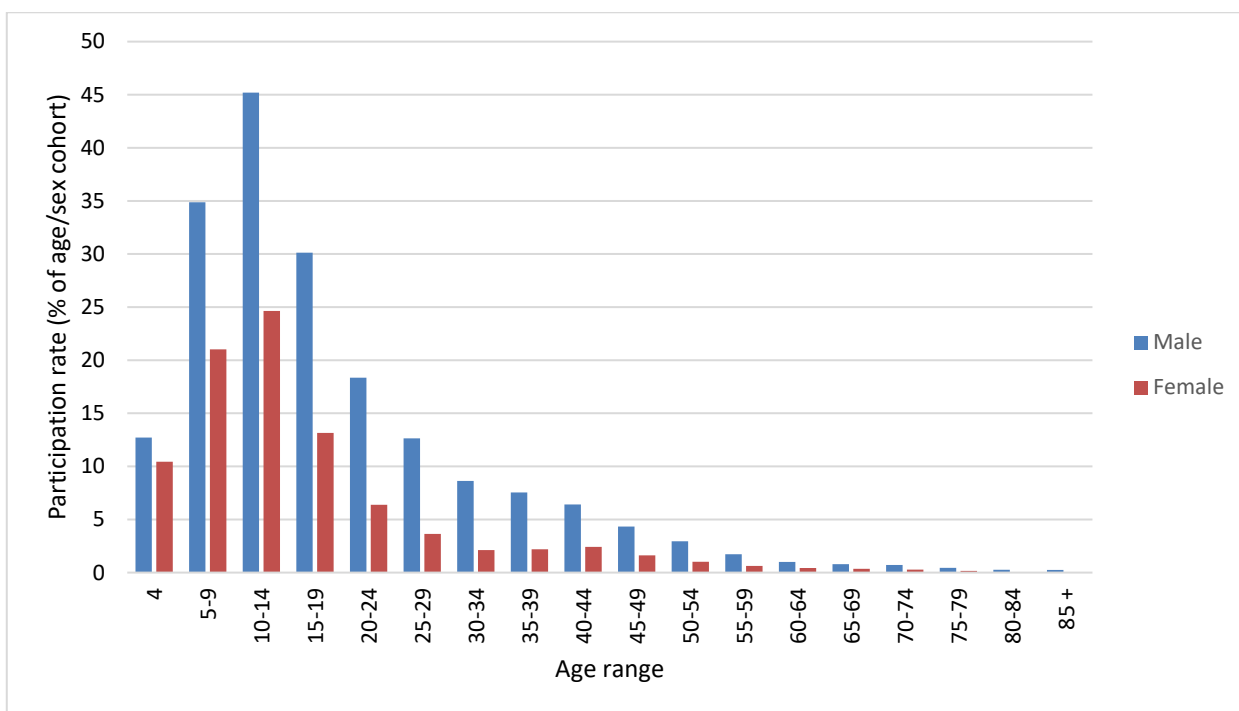


Figure 10. Participation rates, 2021, Metropolitan – Growth: by sex and age

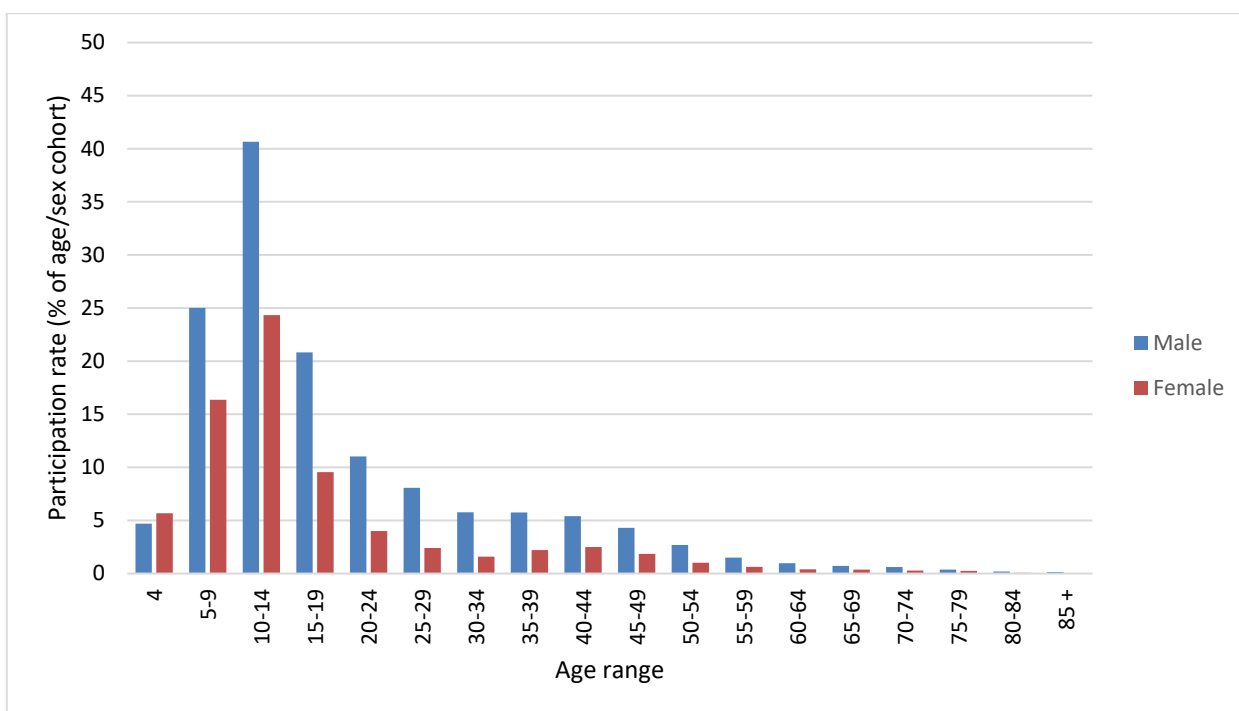


Figure 11. Participation rates, 2020, Metropolitan – Growth: by sex and age

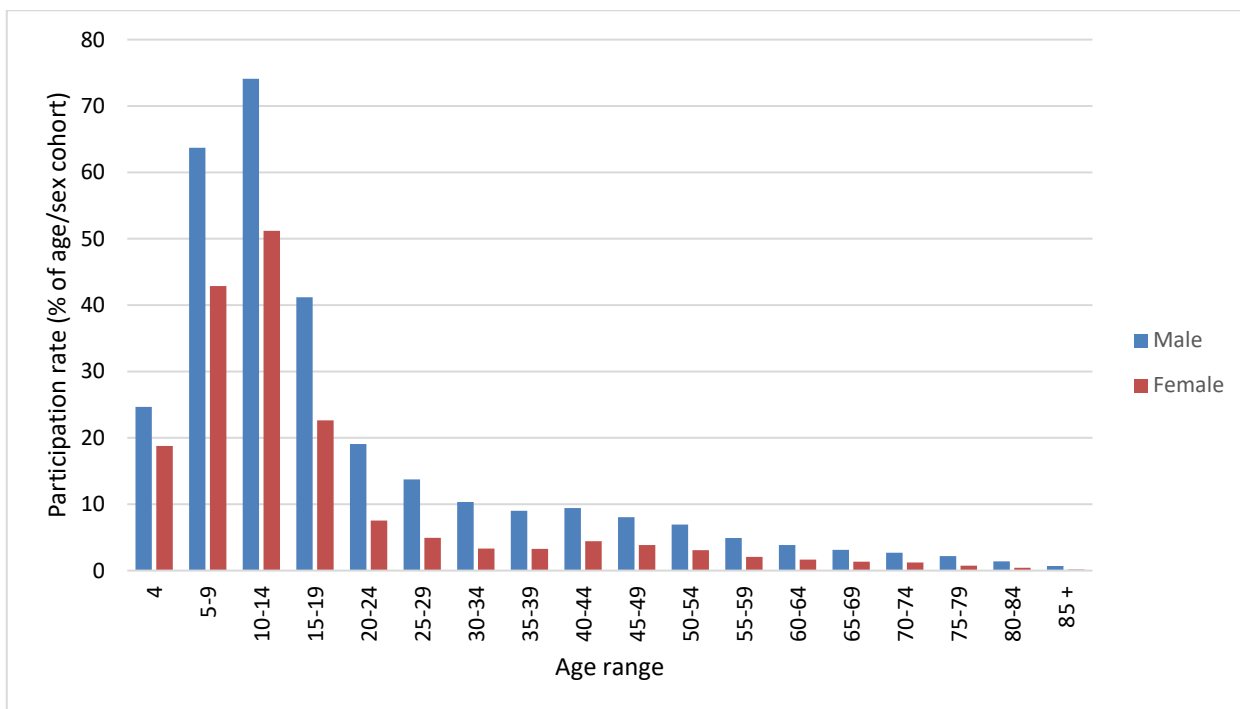


Figure 12. Participation rates, 2021, Metropolitan – Other: by sex and age.

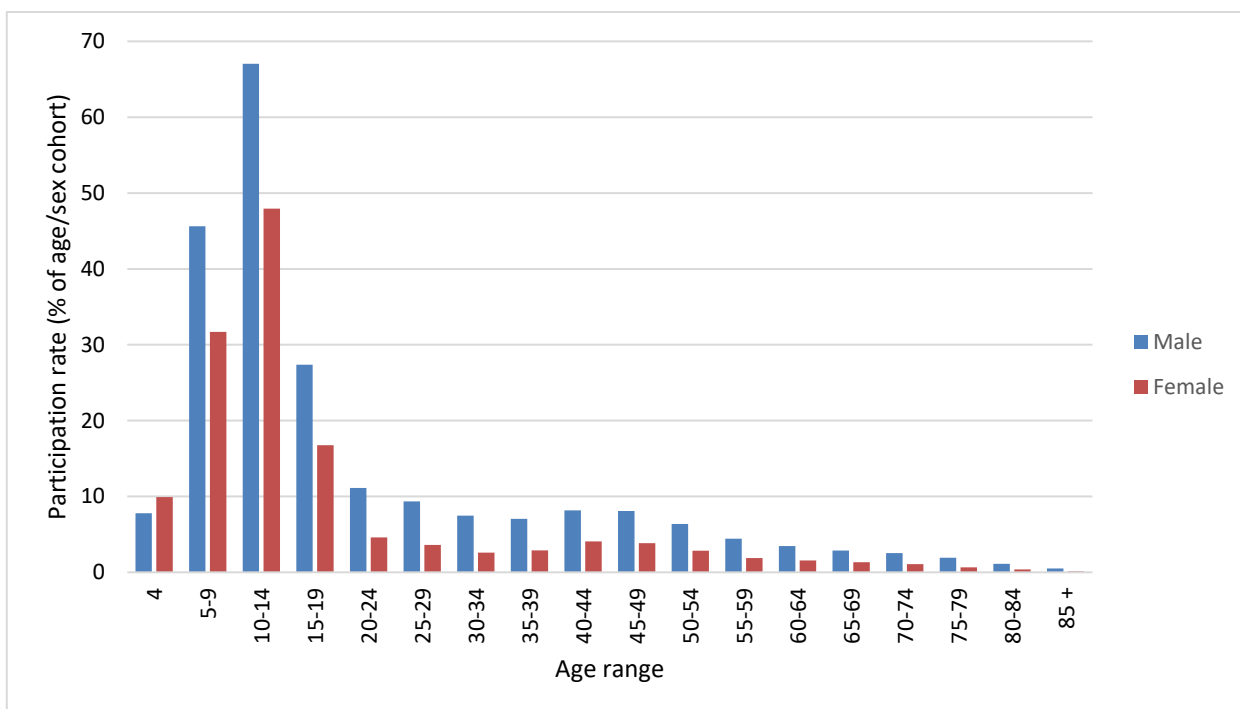


Figure 13. Participation rates, 2020, Metropolitan – Other: by sex and age



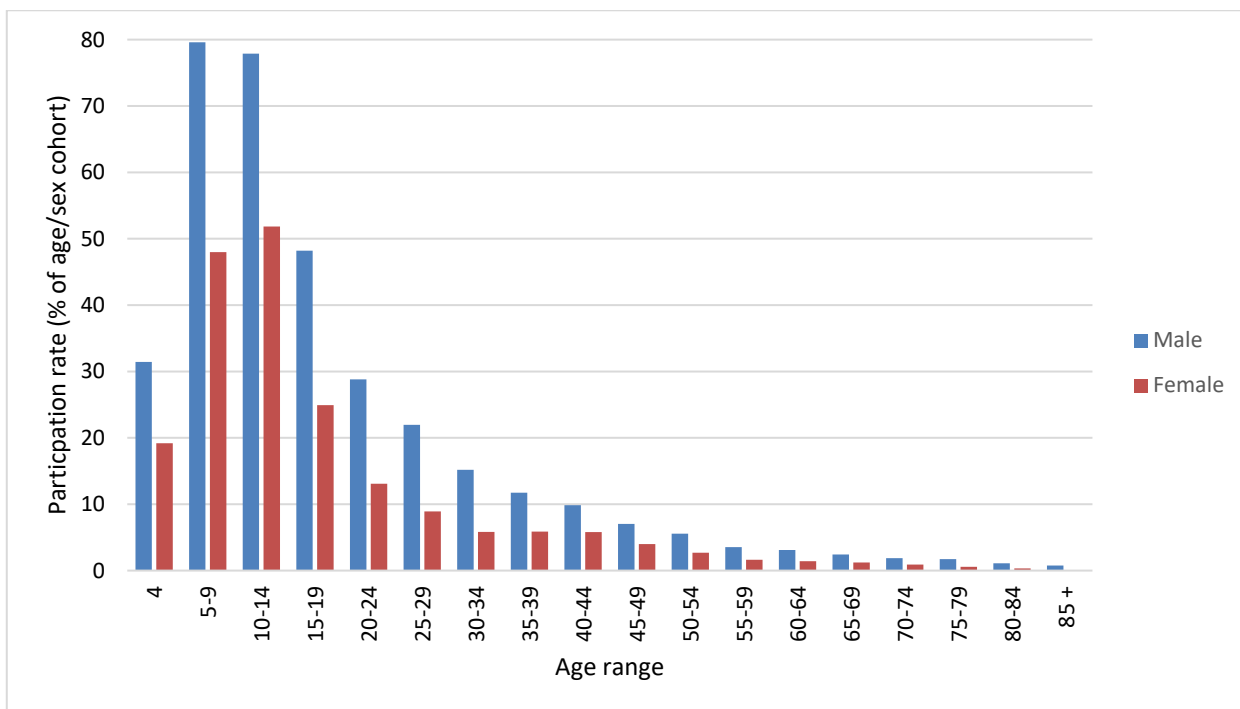


Figure 14. Participation rates, 2021, Regional - Growth: by sex and age

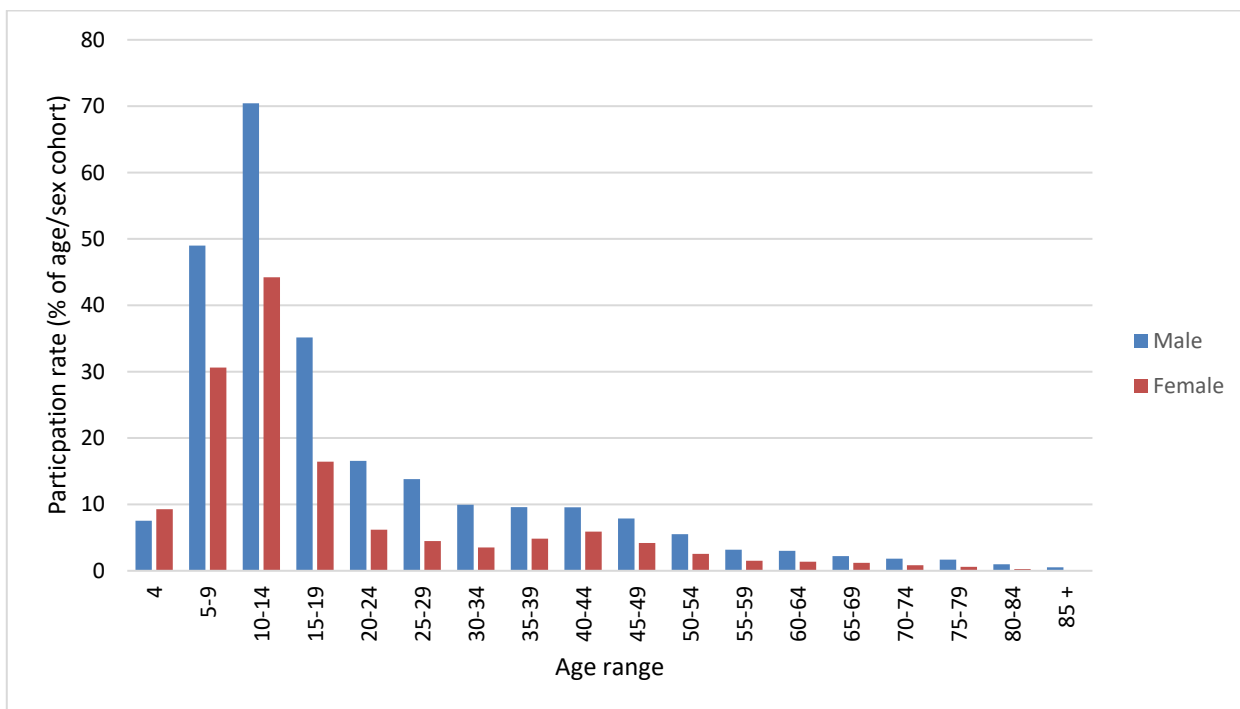


Figure 15. Participation rates, 2020, Regional - Growth: by sex and age

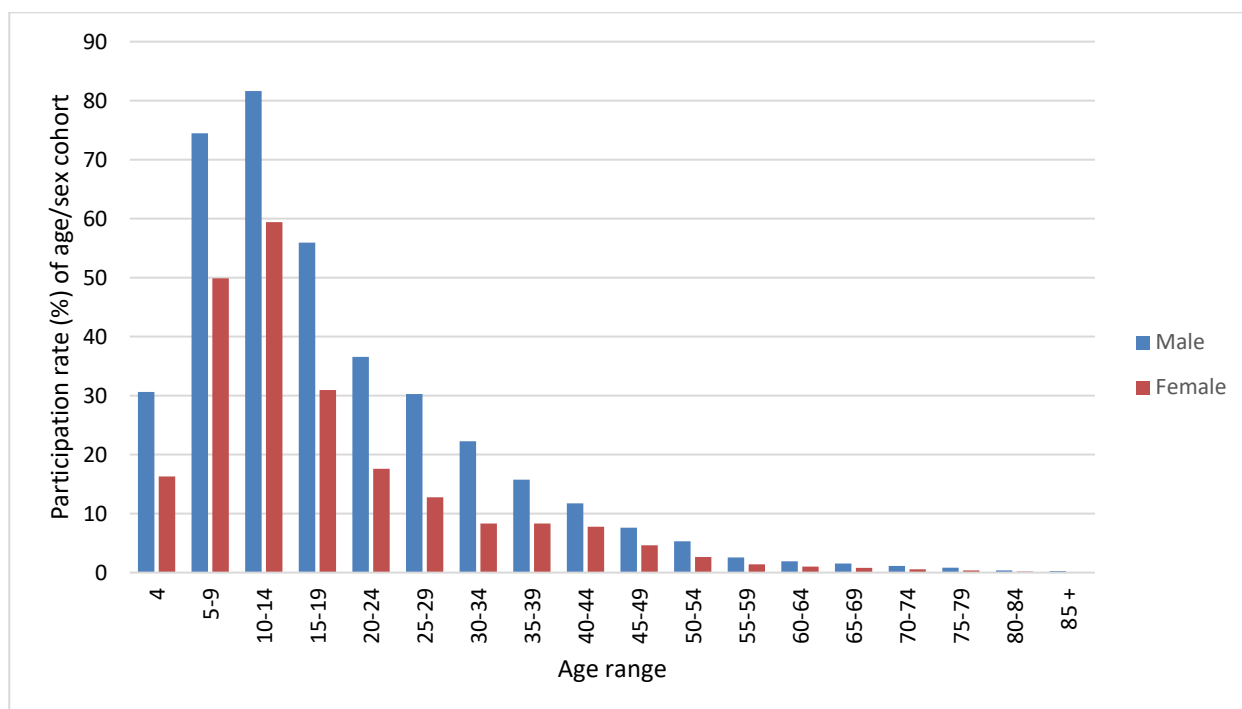


Figure 16. Participation rates, 2021, Regional – Other: by sex and age

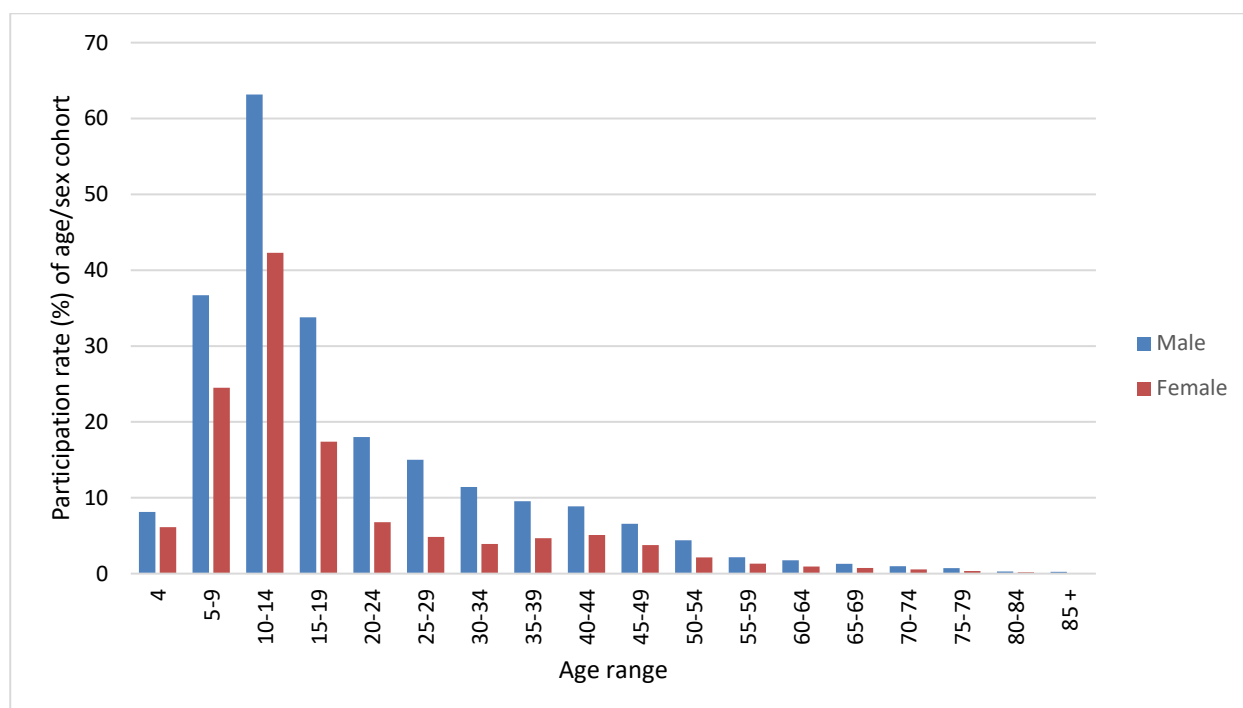


Figure 17. Participation rates, 2020, Regional – Other: by sex and age

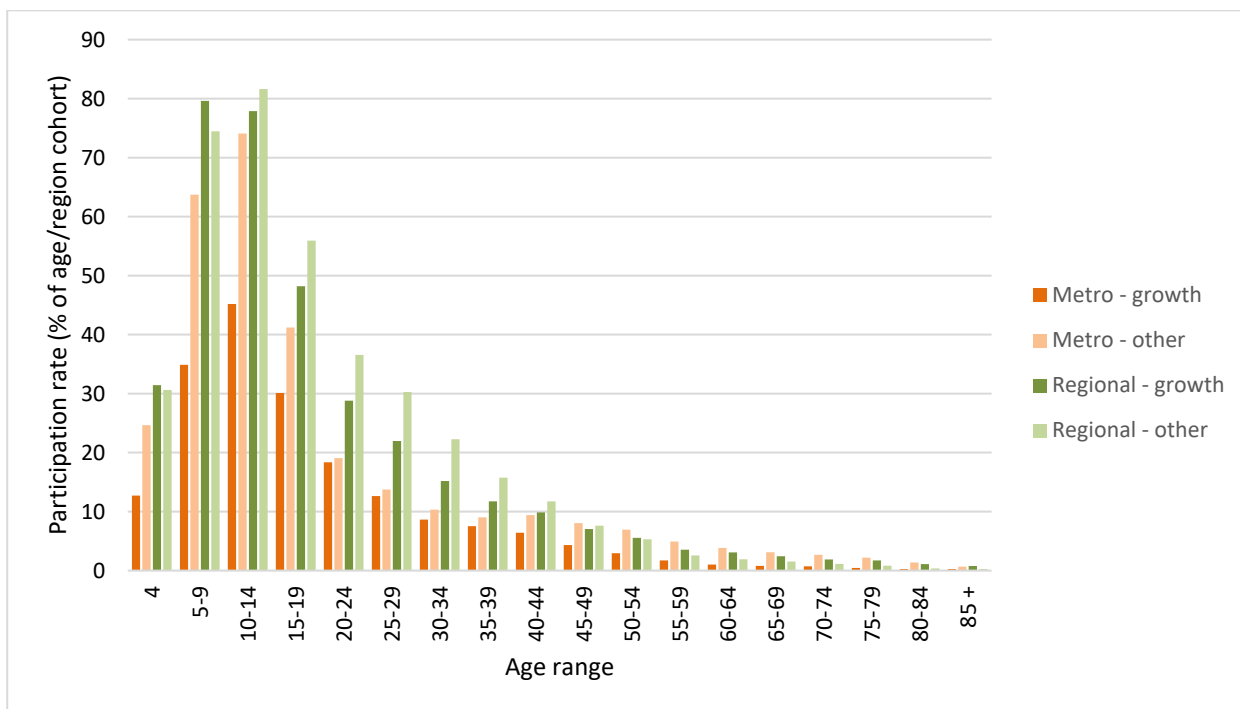


Figure 18. Participation rates, 2021, males: by region and age

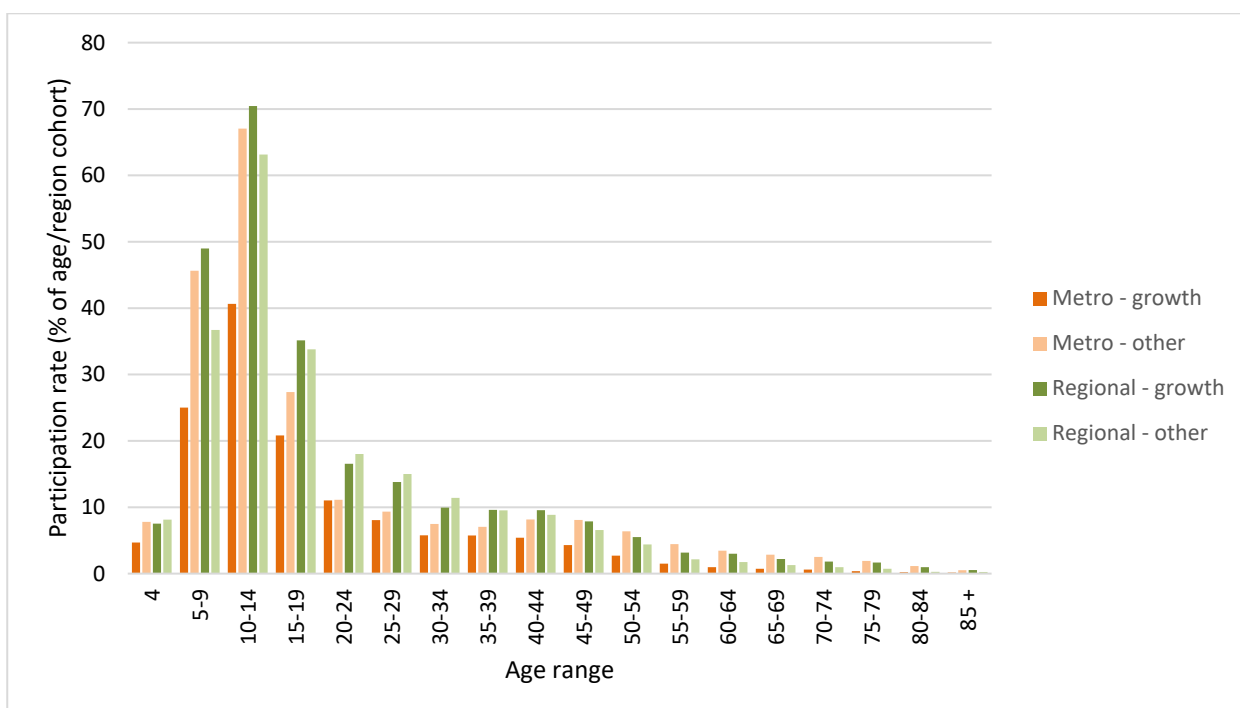


Figure 19. Participation rates, 2020, males: by region and age

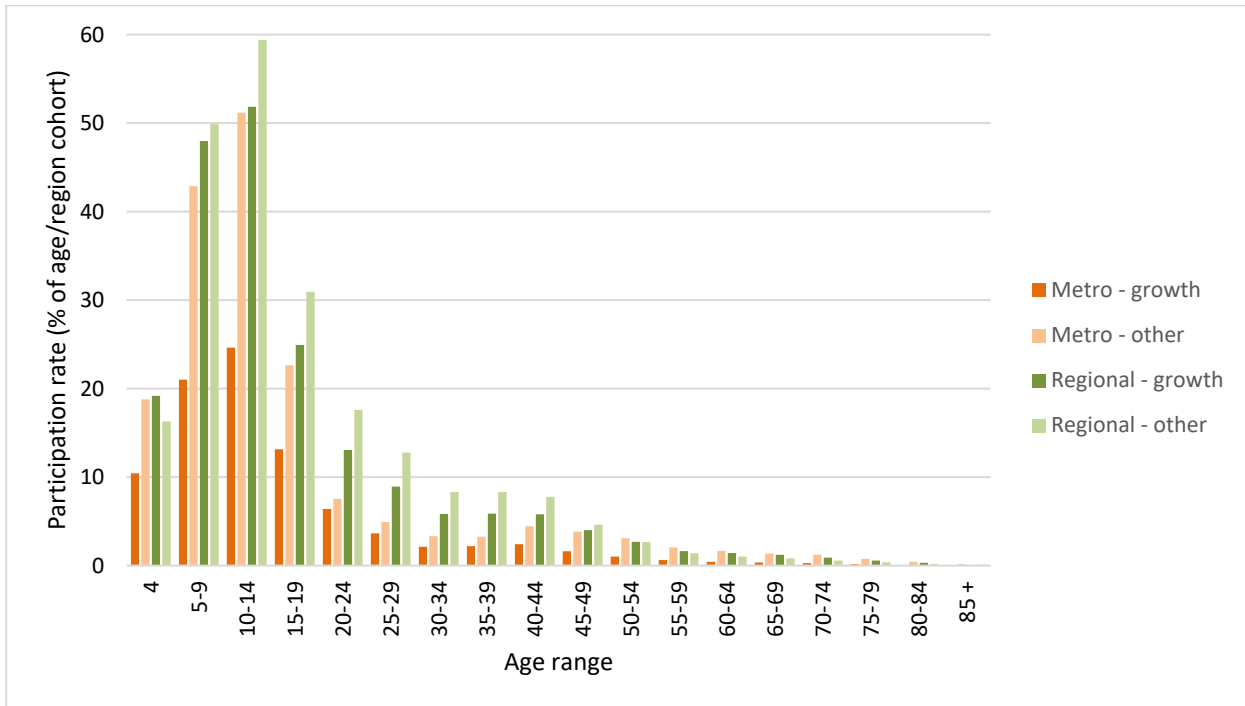


Figure 20. Participation rates, 2021, females: by region and age

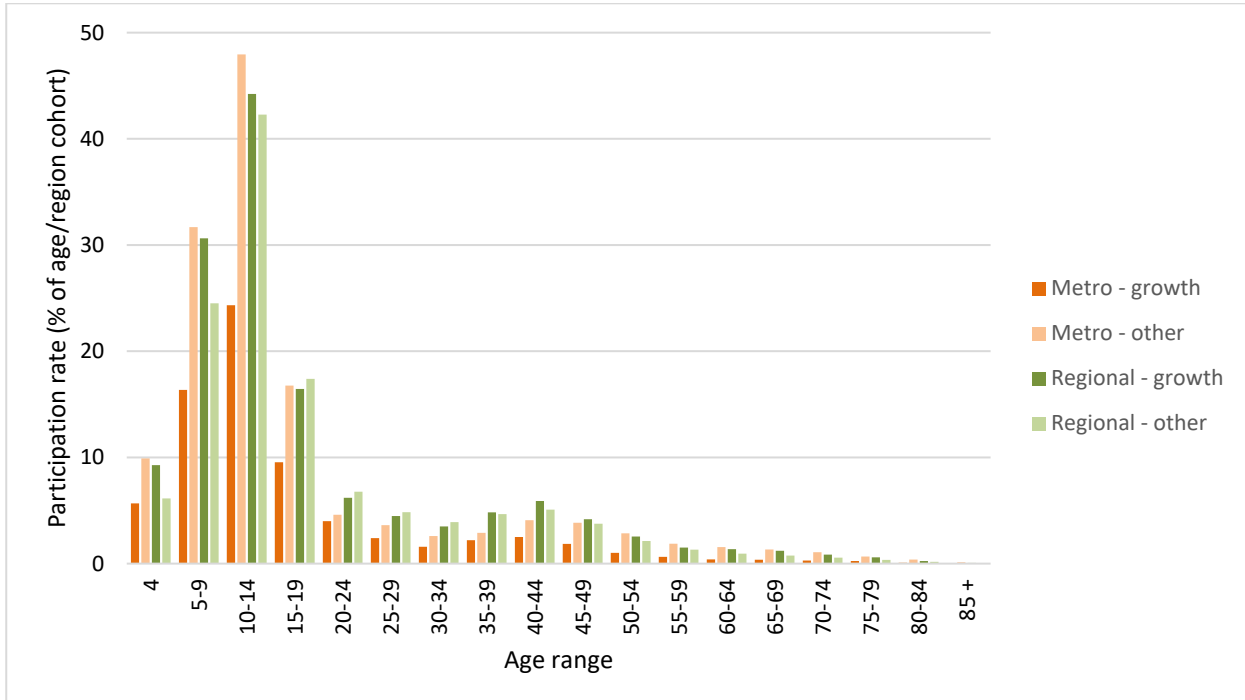


Figure 21. Participation rates, 2020, females: by region and age



Table 5. Participation rates, 2020, 2021, Victoria: by Local Government Area

LGA name	Particip. Rate <sup>1</sup> 2020	Rank <sup>2</sup> 2020	Particip. Rate <sup>1</sup> 2021	Rank <sup>2</sup> 2021	LGA name	Particip. Rate <sup>1</sup> 2020	Rank <sup>2</sup> 2020	Particip. Rate <sup>1</sup> 2021	Rank <sup>2</sup> 2021	LGA name	Particip. Rate <sup>1</sup> 2020	Rank <sup>2</sup> 2020	Particip. Rate <sup>1</sup> 2021	Rank <sup>2</sup> 2021
<b>Metropolitan - growth</b>					Nillumbik (S)	16.50	2	20.30	2	Hepburn (S)	7.05	38	11.18	39
Cardinia (S)	10.07	1	13.47	1	Port Phillip (C)	8.87	17	11.46	17	Hindmarsh (S)	6.90	39	19.26	13
Casey (C)	7.60	3	9.44	3	Stonnington (C)	10.74	14	13.47	14	Horsham (RC)	10.91	12	18.02	15
Hume (C)	5.68	6	8.37	6	Whitehorse (C)	10.89	12	13.62	13	Indigo (S)	9.20	24	15.89	26
Melton (S)	5.44	7	8.12	7	Yarra (C)	8.40	19	11.05	18	Latrobe (C)	10.23	16	13.99	34
Mitchell (S)	8.77	2	11.55	2	Yarra Ranges (S)	11.30	9	15.15	8	Loddon (S)	8.91	27	18.51	14
Whittlesea (C)	7.05	4	9.13	4	<b>Regional - growth</b>					Macedon Ranges (S)	11.44	9	17.62	18
Wyndham (C)	7.01	5	8.98	5	Ballarat (C)	9.84	7	14.71	7	Mansfield (S)	9.49	20	16.91	23
<b>Metropolitan - other</b>					Bass Coast (S)	11.07	4	16.93	2	Mildura (RC)	8.53	31	15.10	30
Banyule (C)	12.18	5	15.42	6	Baw Baw (S)	10.52	5	15.77	4	Moira (S)	9.56	19	17.52	19
Bayside (C)	18.44	1	23.39	1	Greater Bendigo (C)	12.26	2	16.14	3	Mount Alexander (S)	8.99	25	14.22	33
Boroondara (C)	13.77	4	19.10	4	Greater Geelong (C)	11.38	3	15.43	5	Moyne (S)	15.38	3	24.61	5
Brimbank (C)	4.30	24	5.98	24	Moorabool (S)	10.02	6	15.14	6	Murrindindi (S)	7.88	33	13.22	37
Darebin (C)	7.74	20	10.94	19	Surf Coast (S)	17.19	1	23.59	1	Northern Grampians (S)	8.11	32	15.97	25
Frankston (C)	10.81	13	13.13	15	<b>Regional - other</b>					Pyrenees (S)	8.95	26	16.29	24
Glen Eira (C)	12.17	6	15.06	9	Alpine (S)	10.50	14	14.83	31	Queenscliffe (B)	20.18	1	26.49	3
Greater Dandenong (C)	3.67	25	5.09	25	Ararat (RC)	7.78	34	13.77	35	South Gippsland (S)	13.42	5	20.67	9
Hobsons Bay (C)	10.15	15	13.72	11	Benalla (RC)	7.47	36	11.00	40	Southern Grampians (S)	18.96	2	29.96	2
Kingston (C)	11.65	8	15.49	5	Buloke (S)	13.38	6	31.24	1	Strathbogie (S)	8.72	30	14.36	32
Knox (C)	11.22	10	13.63	12	Campaspe (S)	10.03	18	17.27	21	Swan Hill (RC)	9.40	22	20.97	7
Manningham (C)	9.94	16	11.89	16	Central Goldfields (S)	9.38	23	15.57	27	Towong (S)	8.89	28	19.42	12
Maribyrnong (C)	6.76	22	9.28	22	Colac-Otway (S)	13.12	7	19.76	11	Wangaratta (RC)	8.79	29	15.47	29
Maroondah (C)	11.71	7	15.28	7	Corangamite (S)	15.25	4	26.08	4	Warrambool (C)	10.61	13	17.01	22
Melbourne (C)	5.10	23	6.13	23	East Gippsland (S)	7.45	37	13.37	36	Wellington (S)	11.01	10	17.73	17
Monash (C)	8.53	18	10.43	20	Gannawarra (S)	10.31	15	20.89	8	West Wimmera (S)	5.80	40	17.81	16
Moonee Valley (C)	11.10	11	13.96	10	Glenelg (S)	10.21	17	20.55	10	Wodonga (RC)	7.72	35	11.96	38
Moreland (C)	7.52	21	9.38	21	Golden Plains (S)	10.99	11	17.35	20	Yarriambiack (S)	11.51	8	22.07	6
Mornington Peninsula (S)	15.23	3	19.61	3	Greater Shepparton (C)	9.47	21	15.52	28					

<sup>1</sup> Number of player registrations per 100 residents

<sup>2</sup> In descending order of participation rate within each region. Rank derived from rate to six decimals

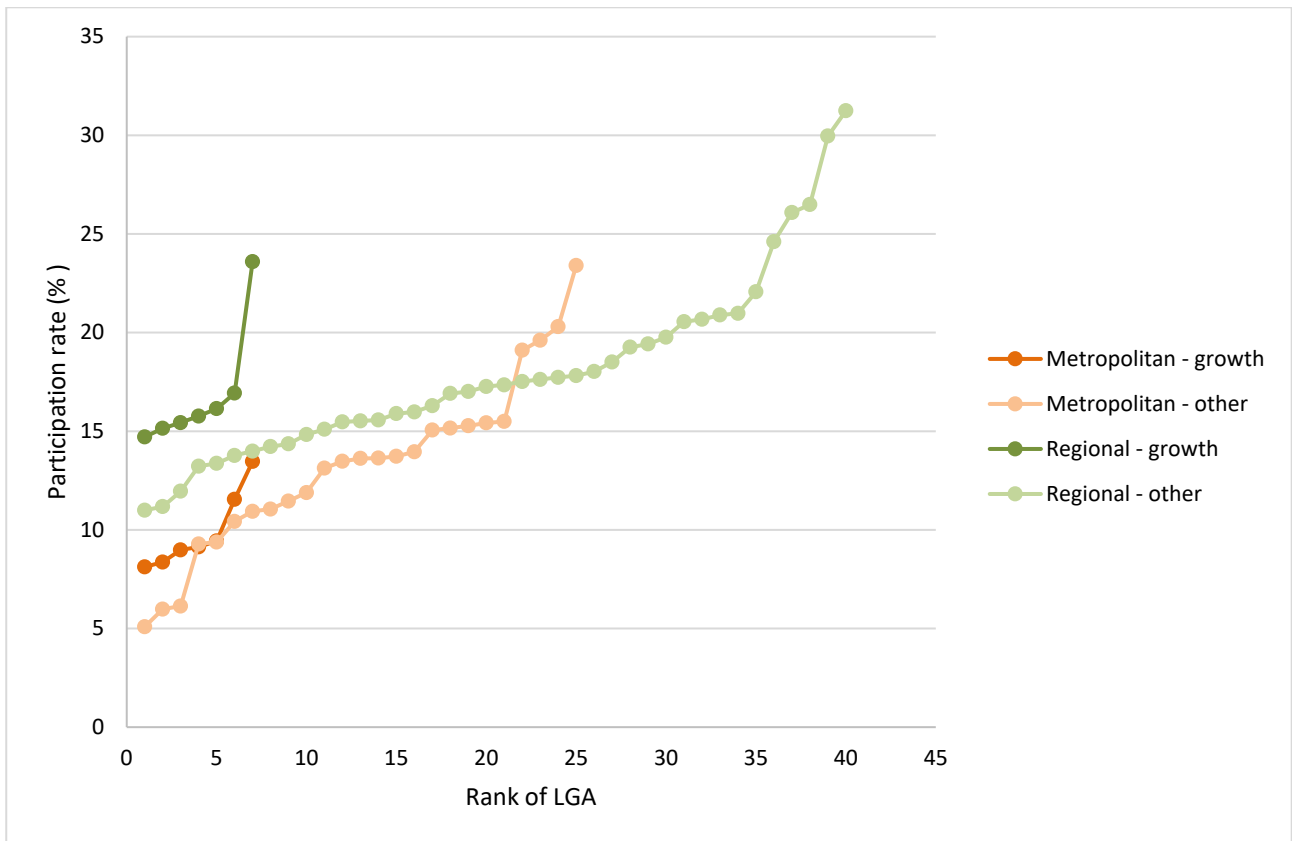
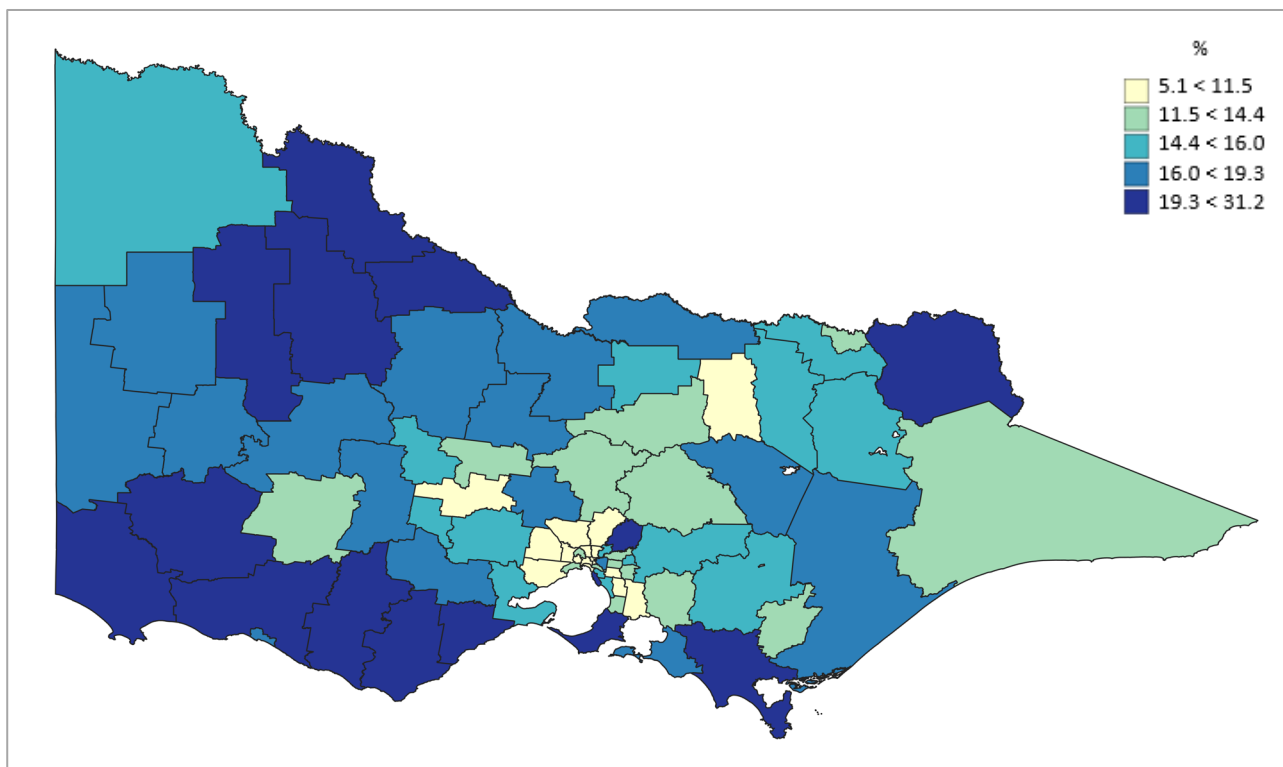
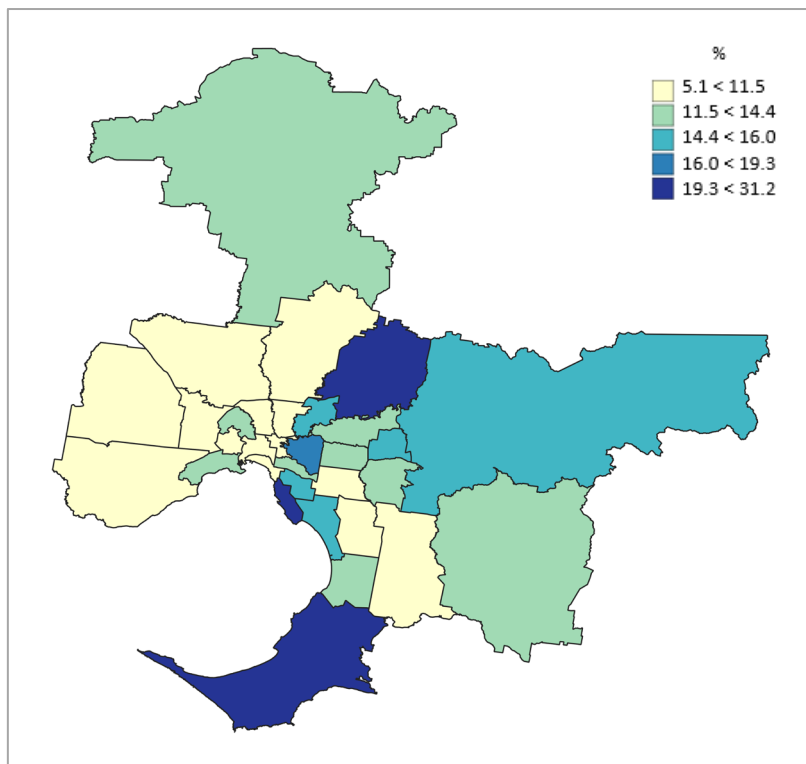


Figure 22. Participation rates, 2021: LGA by region

Map 1. Participation rate, 2021: Victoria, by LGA



Map 2. Participation rate, by LGA in Metropolitan regions, 2021



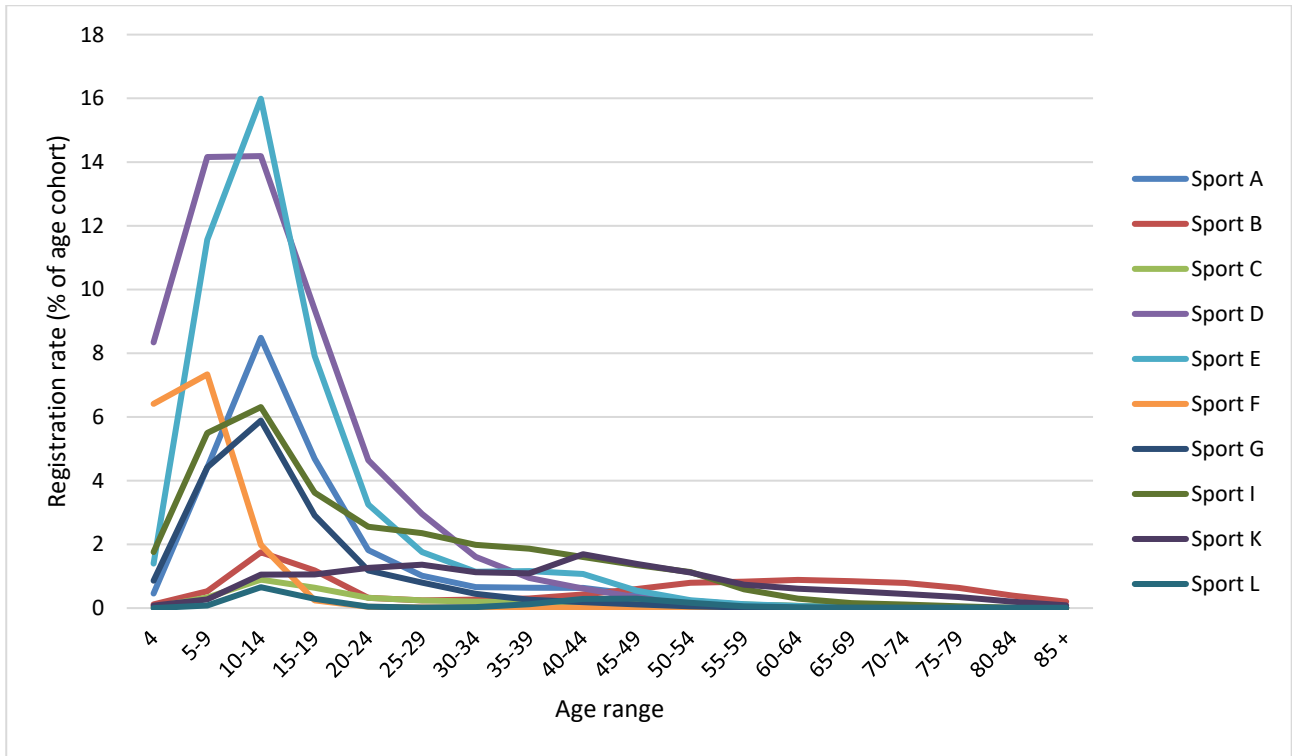


Figure 23. Participation rates, 2021, Victoria: by sport and age





Table 6. Participation rates and SEIFA rank, 2021, Victoria: by Local Government Area

LGA name	Participation		SEIFA		Rank diff. <sup>4</sup>	LGA name	Participation		SEIFA		Rank diff. <sup>4</sup>
	Rate <sup>1</sup>	Rank <sup>2</sup>	Score <sup>3</sup>	Rank <sup>2</sup>			Rate <sup>1</sup>	Rank <sup>2</sup>	Score <sup>3</sup>	Rank <sup>2</sup>	
<b>Metropolitan - growth</b>						Nillumbik (S)	20.3	2	1093	5	-3
Cardinia (S)	13.5	1	996	2	-1	Port Phillip (C)	11.5	17	1101	4	13
Casey (C)	9.4	3	991	3	0	Stonnington (C)	13.5	14	1120	3	11
Hume (C)	8.4	6	947	7	-1	Whitehorse (C)	13.6	13	1063	10	3
Melton (S)	8.1	7	981	5	2	Yarra (C)	11.1	18	1081	7	11
Mitchell (S)	11.5	2	972	6	-4	Yarra Ranges (S)	15.2	8	1017	21	-13
Whittlesea (C)	9.1	4	982	4	0	<b>Regional – Growth (7)</b>					
Wyndham (C)	9.0	5	1002	1	4	Ballarat (C)	14.7	7	965	5	2
<b>Metropolitan - other</b>						Bass Coast (S)	16.9	2	945	7	-5
Banyule (C)	15.4	6	1055	12	-6	Baw Baw (S)	15.8	4	976	4	0
Bayside (C)	23.4	1	1125	2	-1	Greater Bendigo (C)	16.1	3	961	6	-3
Boroondara (C)	19.1	4	1128	1	3	Greater Geelong (C)	15.4	5	980	3	2
Brimbank (C)	6.0	24	930	24	0	Moorabool (S)	15.1	6	988	2	4
Darebin (C)	10.9	19	1020	18	1	Surf Coast (S)	23.6	1	1064	1	0
Frankston (C)	13.1	15	981	23	-8	<b>Regional – Other (40)</b>					
Glen Eira (C)	15.1	9	1092	6	3	Alpine (S)	14.8	31	970	12	19
Greater Dandenong (C)	5.1	25	915	25	0	Ararat (RC)	13.8	35	931	34	1
Hobsons Bay (C)	13.7	11	1020	19	-8	Benalla (RC)	11.0	40	936	28	12
Kingston (C)	15.5	5	1042	14	-9	Buloke (S)	31.2	1	949	22	-21
Knox (C)	13.6	12	1032	16	-4	Campaspe (S)	17.3	21	943	23	-2
Manningham (C)	11.9	16	1076	8	8	Central Goldfields (S)	15.6	27	870	40	-13
Maribyrnong (C)	9.3	22	1019	20	2	Colac-Otway (S)	19.8	11	939	24	-13
Maroondah (C)	15.3	7	1034	15	-8	Corangamite (S)	26.1	4	959	17	-13
Melbourne (C)	6.1	23	1071	9	14	East Gippsland (S)	13.4	36	937	27	9
Monash (C)	10.4	20	1060	11	9	Gannawarra (S)	20.9	8	934	30	-22
Moonee Valley (C)	14.0	10	1046	13	-3	Glenelg (S)	20.5	10	925	36	-26
Moreland (C)	9.4	21	1026	17	4	Golden Plains (S)	17.3	20	1004	3	17
Mornington Peninsula (S)	19.6	3	1013	22	-19	Greater Shepparton (C)	15.5	28	937	25	3



LGA name	Participation		SEIFA		Rank diff. <sup>4</sup>
	Rate <sup>1</sup>	Rank <sup>2</sup>	Score <sup>3</sup>	Rank <sup>2</sup>	
<b>Regional – Other (40)</b>					
Hepburn (S)	11.2	39	979	7	32
Hindmarsh (S)	19.3	13	931	33	-20
Horsham (RC)	18.0	15	958	18	-3
Indigo (S)	15.9	26	995	5	21
Latrobe (C)	14.0	34	916	39	-5
Loddon (S)	18.5	14	932	31	-17
Macedon Ranges (S)	17.6	18	1047	2	16
Mansfield (S)	16.9	23	986	6	17
Mildura (RC)	15.1	30	921	37	-7
Moira (S)	17.5	19	930	35	-16
Mount Alexander (S)	14.2	33	979	8	25
Moyne (S)	24.6	5	998	4	1
Murrindindi (S)	13.2	37	973	11	26
Northern Grampians (S)	16.0	25	921	38	-13
Pyrenees (S)	16.3	24	937	26	-2
Queenscliffe (B)	26.5	3	1070	1	2
South Gippsland (S)	20.7	9	965	14	-5
Southern Grampians (S)	30.0	2	969	13	-11
Strathbogie (S)	14.4	32	957	19	13
Swan Hill (RC)	21.0	7	934	29	-22
Towong (S)	19.4	12	974	10	2
Wangaratta (RC)	15.5	29	962	15	14
Warrnambool (C)	17.0	22	961	16	6
Wellington (S)	17.7	17	954	21	-4
West Wimmera (S)	17.8	16	977	9	7
Wodonga (RC)	12.0	38	957	20	18
Yarriambiack (S)	22.1	6	932	32	-26

<sup>1</sup> Number of player registrations per 100 residents

<sup>2</sup> In descending order of participation rate within each region

<sup>3</sup> in descending order of seifa score within each region

<sup>4</sup> +ve difference: participation rate rank>SEIFA rank. -ve difference: participation rate rank<SEIFA rank. No difference:= participation rate rank expected for SEIFA



## Definition of the four Sport Participation Research Project (SPRP) regions

For the purpose of regional breakdowns included in standard reports prepared under the Sport Participation Research Project (SPRP), four regions have been defined by the SPRP research team in consultation with Sport and Recreation Victoria and VicHealth. Each region consists of a group of local government areas (LGAs), listed here in alphabetical order. B =Borough, C = City, RC = Rural City, S = Shire.

There are two driving principles behind the designation of these four regions:

- The patterns of sport participation in metropolitan and non-metropolitan areas are known to differ substantially.
- Within both metropolitan and non-metropolitan areas, projected growth in population is very uneven.

The Metropolitan - Growth region consists of the seven LGAs containing the four growth corridors designated by the Metropolitan Planning Authority. Six of the seven are within the current Melbourne Metropolitan Area designated by the State Government. The seventh, Mitchell Shire, is currently designated Non-metropolitan.

The Regional - Growth region consists of the LGAs containing the three largest regional centres, Geelong, Ballarat and Bendigo, together with four LGAs which are expected, according to State Government population projections, to experience high population growth during the period up to 2021. Each of these four LGAs is on the outer periphery of one or more of Melbourne, Geelong and Ballarat.

The Metropolitan - Other region consists of the remaining 25 LGAs within the designated Melbourne Metropolitan Area.

The Regional - Other region consists of the remaining 40 LGAs outside the designated Melbourne Metropolitan Area.

<b>Metropolitan – Growth (7)</b>	<b>Regional – Other (40)</b>
Cardinia (S)	Alpine (S)
Casey (C)	Ararat (RC)
Hume (C)	Benalla (RC)
Melton (C)	Buloke (S)
Mitchell (S)	Campaspe (S)
Whittlesea (C)	Central Goldfields (S)
Wyndham (C)	Colac-Otway (S)
	Corangamite (S)
<b>Metropolitan – Other (25)</b>	East Gippsland (S)
Banyule (C)	Gannawarra (S)
Bayside (C)	Glenelg (S)
Boroondara (C)	Golden Plains (S)
Brimbank (C)	Greater Shepparton (C)
Darebin (C)	Hepburn (S)
Frankston (C)	Hindmarsh (S)
Glen Eira (C)	Horsham (RC)
Greater Dandenong (C)	Indigo (S)
Hobsons Bay (C)	Latrobe (C)
Kingston (C)	Loddon (S)
Knox (C)	Macedon Ranges (S)
Manningham (C)	Mansfield (S)
Maribyrnong (C)	Mildura (RC)
Maroondah (C)	Moira (S)
Melbourne (C)	Mount Alexander (S)
Monash (C)	Moyne (S)
Moonee Valley (C)	Murrindindi (S)
Moreland (C)	Northern Grampians (S)
Mornington Peninsula (S)	Pyrenees (S)
Nillumbik (S)	Queenscliffe (B)
Port Phillip (C)	South Gippsland (S)
Stonnington (C)	Southern Grampians (S)
Whitehorse (C)	Strathbogie (S)
Yarra (C)	Swan Hill (RC)
Yarra Ranges (S)	Towong (S)
	Wangaratta (RC)
<b>Regional – Growth (7)</b>	Warrnambool (C)
Ballarat (C)	Wellington (S)
Bass Coast (S)	West Wimmera (S)
Baw Baw (S)	Wodonga (C)
Greater Bendigo (C)	Yarriambiack (S)
Greater Geelong (C)	
Moorabool (S)	
Surf Coast (S)	



The **Sport Participation Research Project** is funded by VicHealth and Sport and Recreation Victoria, and conducted by Professor Rochelle Eime, Melanie Charity, Dr Aurélie Pankowiak, Dr Jack Harvey and Professor Hans Westerbeek (Victoria University and Federation University Australia).

**Contact:** Professor Rochelle Eime  
Victoria University and Federation University Australia  
[r.eime@federation.edu.au](mailto:r.eime@federation.edu.au)  
0418 800 521

### **Data accuracy**

- There are some differences in reported participation counts and rates compared to the previously prepared annual reports for individual sports and the aggregated reports. For the present report we used the most current SSA and ABS data as available at time of reporting.
- Counts of participants in local government areas (LGAs) are estimates based on the fractional allocation of residential postcodes to LGAs using correspondence tables published by the Australian Bureau of Statistics and aligned to participant data year depending on availability. As such, counts in tables appear as whole numbers, rounded to the nearest whole number.
- Some postcode areas cross state borders, requiring mathematical 'border effect' adjustments. As such, counts are only reported for the 79 Victorian LGAs as described in the regions definition section above.
- Total Player estimate uses those aged 4-100 while the Total ERP uses the whole population (based on the assumption that those under 4 do not participate in registered sport).
- For the current reporting year, the Estimated Resident Population (ERP) used in calculations is from the previous year. This methodology is linked to the availability of this data from the ABS. For previous years reported within this report, the SSA and ERP data are year matched.

### **Reference**

Australian Bureau of Statistics (2022). Regional population by age and sex. Available from: <https://www.abs.gov.au/statistics/people/population/regional-population-age-and-sex>

Australian Bureau of Statistics. Correspondences: Australian Statistical Geography Standard (ASGS) Edition 3. 2016. Available from: <https://www.abs.gov.au/AUSSTATS/abs@.nsf/DetailsPage/1270.0.55.003June%202020?OpenDocument>



The Physical Activity and Sport Insights Research group is a collaboration between the Institute for Health and Sport, Victoria University and the Institute of Health and Wellbeing, Federation University.

**Contact:**

Professor Rochelle Eime  
Email: [r.eime@federation.edu.au](mailto:r.eime@federation.edu.au)  
[PASIGlobal.com](http://PASIGlobal.com)

